



BRADFORD CITY

Coach : Grayson Simon

24/04/2018
LEAGUE ONE 2017/2018

2 - 0



MILTON KEYNES DONS

Coach : Millen Andrew

Toner Ben Northern Commercials Stadium 97' (46 + 50)

| | | | | | | | |
|----|-----|--------------------------|-----|----|-----|--------------------|----------|
| 1 | GKP | C. Doyle ('85) | | 13 | GKP | W. Sietsma ('95) | |
| 29 | DEF | A. McMahon ('86) | 83' | 12 | DEF | S. Golbourne ('88) | |
| 15 | DEF | S. Warnock ('81) | | 15 | DEF | E. Ward ('85) | |
| 5 | DEF | M. Kilgallon ('84) | | 2 | DEF | G. Williams ('93) | |
| 22 | DEF | N. Knight-Percival ('87) | 80' | 25 | DEF | C. Brittain ('98) | 76' |
| 8 | DEF | T. Dieng ('92) | 12' | 20 | DEF | J. Tymon ('99) | |
| 30 | MID | M. Lund ('90) | 70' | 6 | MID | E. Upson ('89) | |
| 17 | MID | A. Gilliead ('96) | | 8 | MID | O. Cissé ('91) | |
| 18 | MID | C. Guy ('96) | 85' | 10 | MID | C. Aneke ('93) | |
| 9 | FWD | C. Wyke ('92) | | 17 | MID | M. Tavernier ('99) | 85' 79' |
| 21 | FWD | K. Brünker ('94) | 89' | 27 | FWD | I. Ugbo ('98) | 64' |

SUBSTITUTES

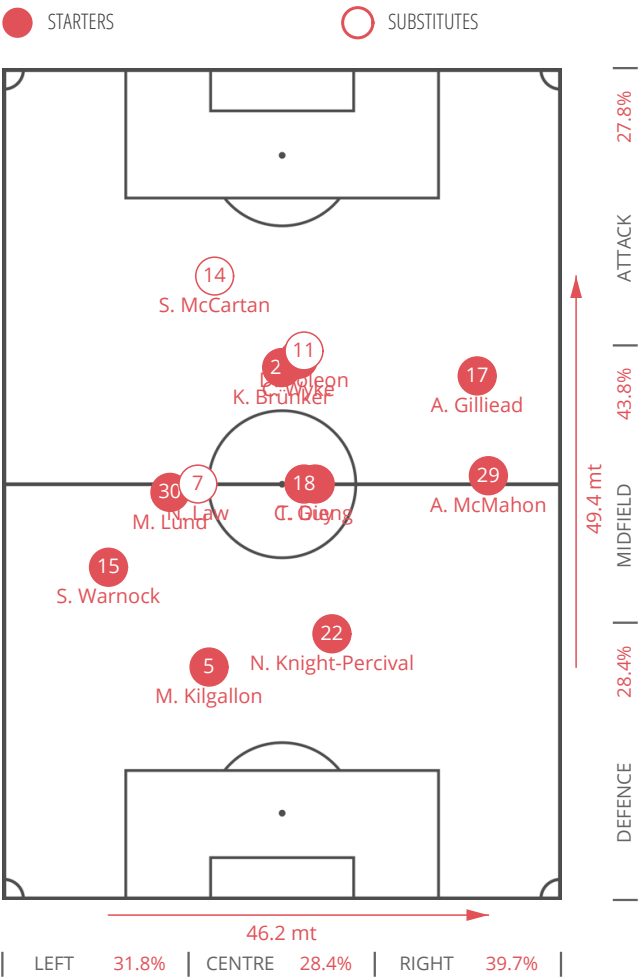
| | | | | | | | |
|----|-----|-------------------|-----|----|-----|------------------------|-----|
| 7 | MID | N. Law ('88) | 70' | 14 | MID | K. Agard ('89) | 85' |
| 14 | FWD | S. McCartan ('94) | 92' | 31 | MID | B. Thomas-Asante ('99) | 76' |
| 11 | FWD | D. Poleon ('93) | 89' | 16 | FWD | R. Muirhead ('96) | 64' |

BACKUPS

| | | | | | | | |
|----|-----|-------------------|--|----|-----|--------------------|--|
| 23 | GKP | L. Raeder ('93) | | 42 | GKP | A. Jones (') | |
| 3 | DEF | A. Chicksen ('90) | | 3 | DEF | D. Lewington ('84) | |
| 6 | MID | R. Vincelot ('85) | | 5 | DEF | S. Wootton ('91) | |
| 34 | FWD | O. Patrick ('96) | | 7 | MID | N. Reo-Coker ('84) | |

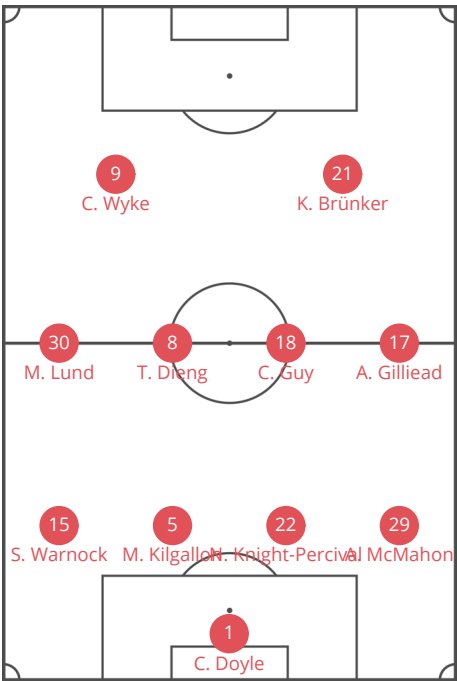
BRADFORD CITY

AVERAGE POSITIONS

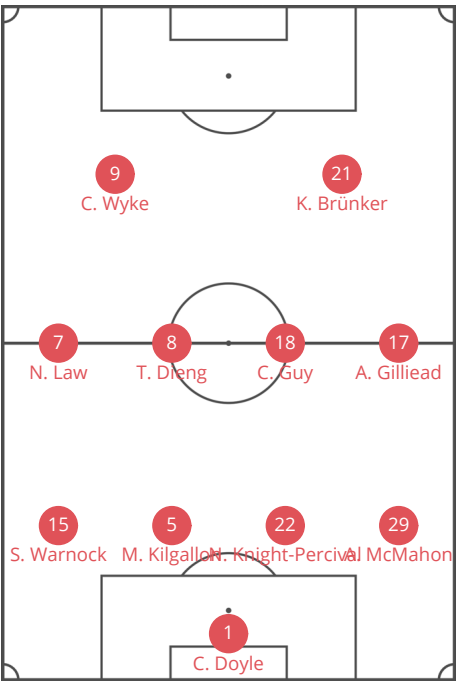


PLAYERS

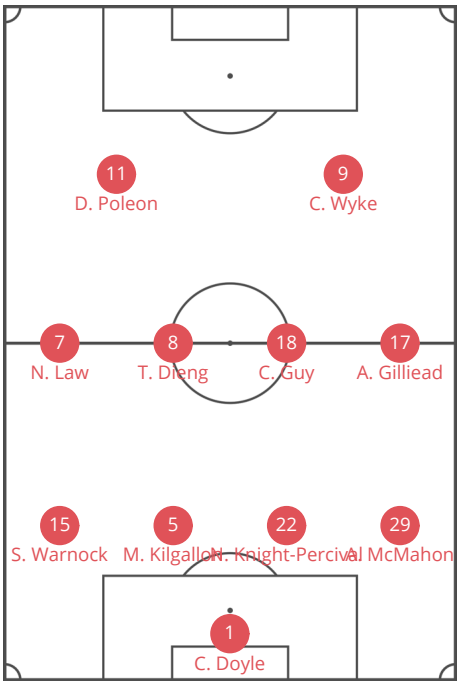
| | | |
|----|-----|--------------------|
| 15 | DEF | S. Warnock |
| 29 | DEF | A. McMahon |
| 8 | DEF | T. Dieng |
| 22 | DEF | N. Knight-Percival |
| 5 | DEF | M. Kilgallon |
| 18 | MID | C. Guy |
| 17 | MID | A. Gilliead |
| 30 | MID | M. Lund |
| 21 | FWD | K. Brünker |
| 9 | FWD | C. Wyke |
| 7 | MID | N. Law |
| 14 | FWD | S. McCartan |
| 11 | FWD | D. Poleon |



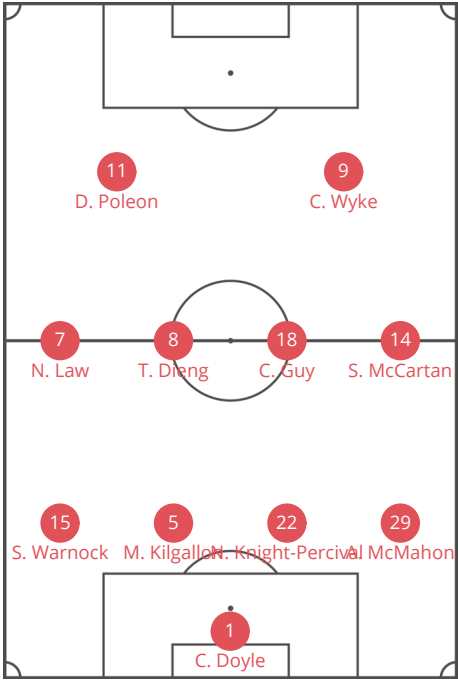
4-4-2
Used from 0' >> 71'



4-4-2
Used from 71' >> 89'



4-4-2
Used from 89' >> 93'

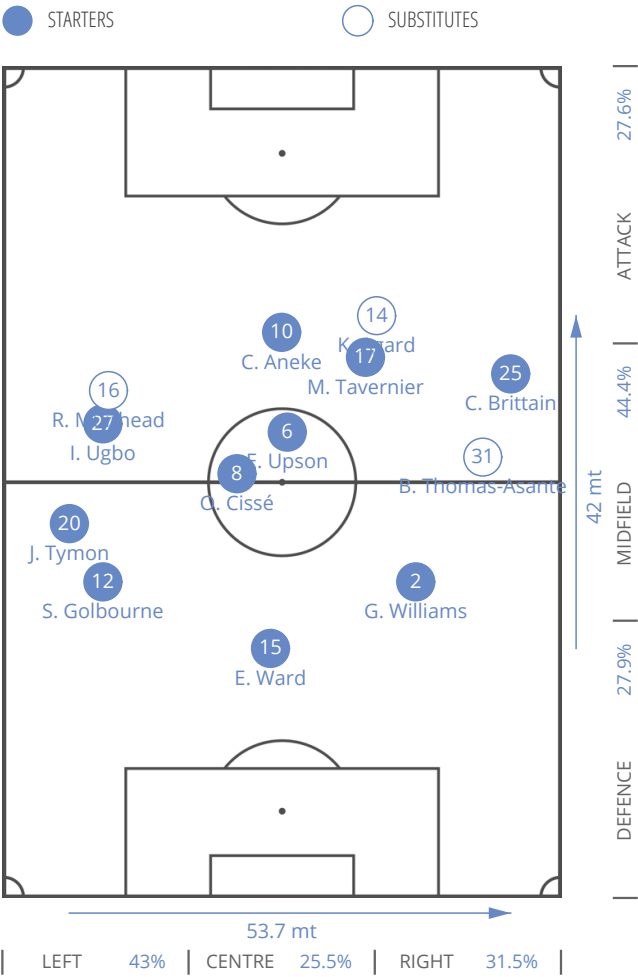


4-4-2

Used from 93' >> 97'

MILTON KEYNES DONS

AVERAGE POSITIONS

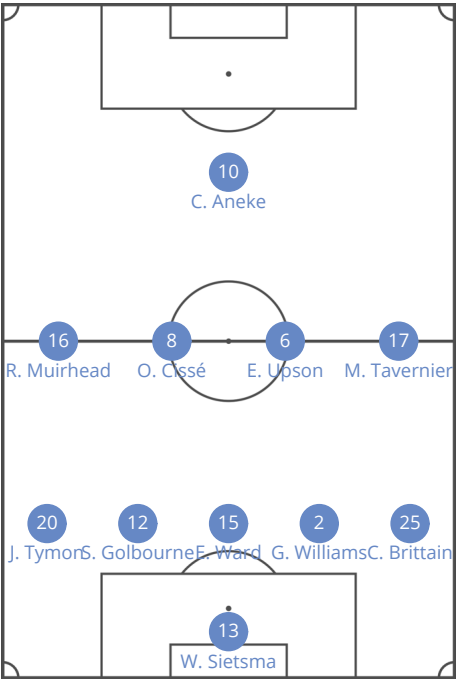


PLAYERS

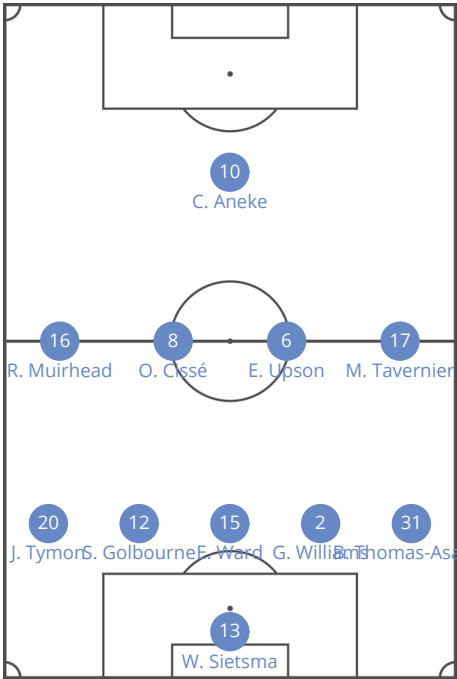
| | | |
|----|-----|------------------|
| 2 | DEF | G. Williams |
| 12 | DEF | S. Golbourne |
| 20 | DEF | J. Tymon |
| 25 | DEF | C. Brittain |
| 15 | DEF | E. Ward |
| 10 | MID | C. Aneke |
| 8 | MID | O. Cissé |
| 6 | MID | E. Upson |
| 17 | MID | M. Tavernier |
| 27 | FWD | I. Ugbo |
| 14 | MID | K. Agard |
| 31 | MID | B. Thomas-Asante |
| 16 | FWD | R. Muirhead |



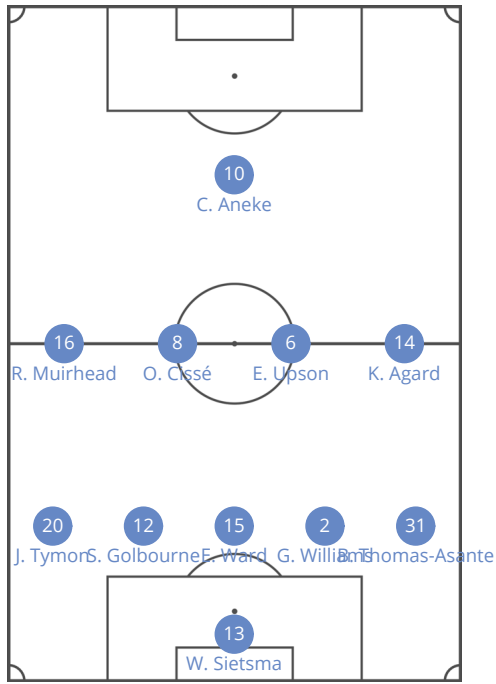
5-4-1
Used from 0' >> 65'



5-4-1
Used from 65' >> 76'



5-4-1
Used from 76' >> 85'



5-4-1

Used from 85' >> 97'



BRADFORD CITY



MILTON KEYNES DONS

1 HALF

2 HALF

TOTAL

1 HALF

2 HALF

TOTAL

GENERALS

| | | | | | | |
|------------------|---------|---------|---------|---------|---------|----------|
| BALL POSSESSION | 14 min | 14 min | 28 min | 17 min | 16 min | 33 min |
| AVERAGE POSITION | 52.5 mt | 52.3 mt | 52.4 mt | 51.3 mt | 54.4 mt | 52.85 mt |
| CORNERS | 2 | 2 | 4 | 4 | 3 | 7 |
| FREE KICK CROSS | 0 | 3 | 3 | 2 | 2 | 4 |
| FREE KICK SHOT | 0 | 1 | 1 | 0 | 0 | 0 |
| FOULS | 5 | 6 | 11 | 5 | 6 | 11 |
| OFFSIDES | 0 | 0 | 0 | 0 | 0 | 0 |

CONSTRUCTION

| | | | | | | |
|------------------------------------|-------------|-------------|-------------|-------------|-------------|-------------|
| PASSES (% ACCURATE) | 183 (72.1%) | 176 (76.1%) | 359 (74.1%) | 207 (72.9%) | 201 (71.1%) | 408 (72.1%) |
| - Final Third Entries (% Accurate) | 46 (76.1%) | 51 (80.4%) | 97 (78.4%) | 50 (66%) | 50 (66%) | 100 (66%) |
| - Other (% Accurate) | 137 (70.8%) | 125 (74.4%) | 262 (72.5%) | 157 (75.2%) | 151 (72.8%) | 308 (74%) |
| LONG PASSES (% ACCURATE) | 36 (61.1%) | 22 (40.9%) | 58 (53.4%) | 31 (51.6%) | 35 (42.9%) | 66 (47%) |
| THROUGH PASSES (% ACCURATE) | 5 (0%) | 5 (40%) | 10 (20%) | 2 (0%) | 2 (0%) | 4 (0%) |
| COUNTERATTACKS | 0 | 0 | 0 | 1 | 6 | 7 |
| ACTIONS STARTED BY GOALKEEPER | 18 | 16 | 34 | 17 | 11 | 28 |
| - Long pass | 13 | 14 | 27 | 10 | 6 | 16 |
| - LOW | 5 | 2 | 7 | 7 | 5 | 12 |
| -- % Right | 20% | 0% | 14.3% | 28.6% | 0% | 16.7% |
| -- % Left | 60% | 100% | 71.4% | 28.6% | 40% | 33.3% |
| -- % Center | 0% | 0% | 0% | 42.9% | 60% | 50% |
| -- % Failed | 20% | 0% | 14.3% | 0% | 0% | 0% |



BRADFORD CITY



MILTON KEYNES DONS

| | 1 HALF | 2 HALF | TOTAL | 1 HALF | 2 HALF | TOTAL |
|-------------------------------------|-----------|-----------|-----------|----------|---------|---------|
| ATTACKING PLAY | | | | | | |
| OPPORTUNITY (% SUCCESSFUL) | 3 (33.3%) | 6 (16.7%) | 9 (22.2%) | 3 (0%) | 4 (0%) | 7 (0%) |
| SHOTS | 6 | 7 | 13 | 4 | 5 | 9 |
| Shot from outside of penalty area | 3 | 1 | 4 | 0 | 2 | 2 |
| Shot from inside of penalty area | 3 | 6 | 9 | 4 | 3 | 7 |
| ACTIONS FINALIZATION | 6 | 11 | 17 | 11 | 6 | 17 |
| - Shot from outside of penalty area | 3 | 1 | 4 | 0 | 2 | 2 |
| - CROSSES | 1 | 2 | 3 | 3 | 2 | 5 |
| -- From left (%) | 0 | 0 | 0 (0%) | 3 (100%) | 1 (50%) | 4 (80%) |
| -- From right (%) | 1 (100%) | 2 (100%) | 3 (100%) | 0 | 1 (50%) | 1 (20%) |
| - Build-Up play | 1 | 7 | 8 | 7 | 1 | 8 |
| - Long ball | 1 | 1 | 2 | 1 | 1 | 2 |
| DEFENSIVE | | | | | | |
| SAVES | 1 | 1 | 2 | 1 | 1 | 2 |
| CLEARANCES | 2 | 8 | 10 | 5 | 5 | 10 |
| - Low | 0 | 0 | 0 | 0 | 0 | 0 |
| - High | 2 | 8 | 10 | 5 | 5 | 10 |
| BALL RECOVERY | 59 | 69 | 128 | 53 | 55 | 108 |
| - End action | 18 | 23 | 41 | 20 | 23 | 43 |
| - Real recovery | 7 | 10 | 17 | -6 | 6 | 0 |
| - Temporary recovery | 34 | 36 | 70 | 39 | 26 | 65 |
| FINAL THIRD ENTRIES | 31 | 37 | 68 | 42 | 47 | 89 |
| FOULS NEAR THE BOX | 1 | 1 | 2 | 0 | 2 | 2 |

TERRITORIAL COVERAGE



BRADFORD CITY

FIRST HALF

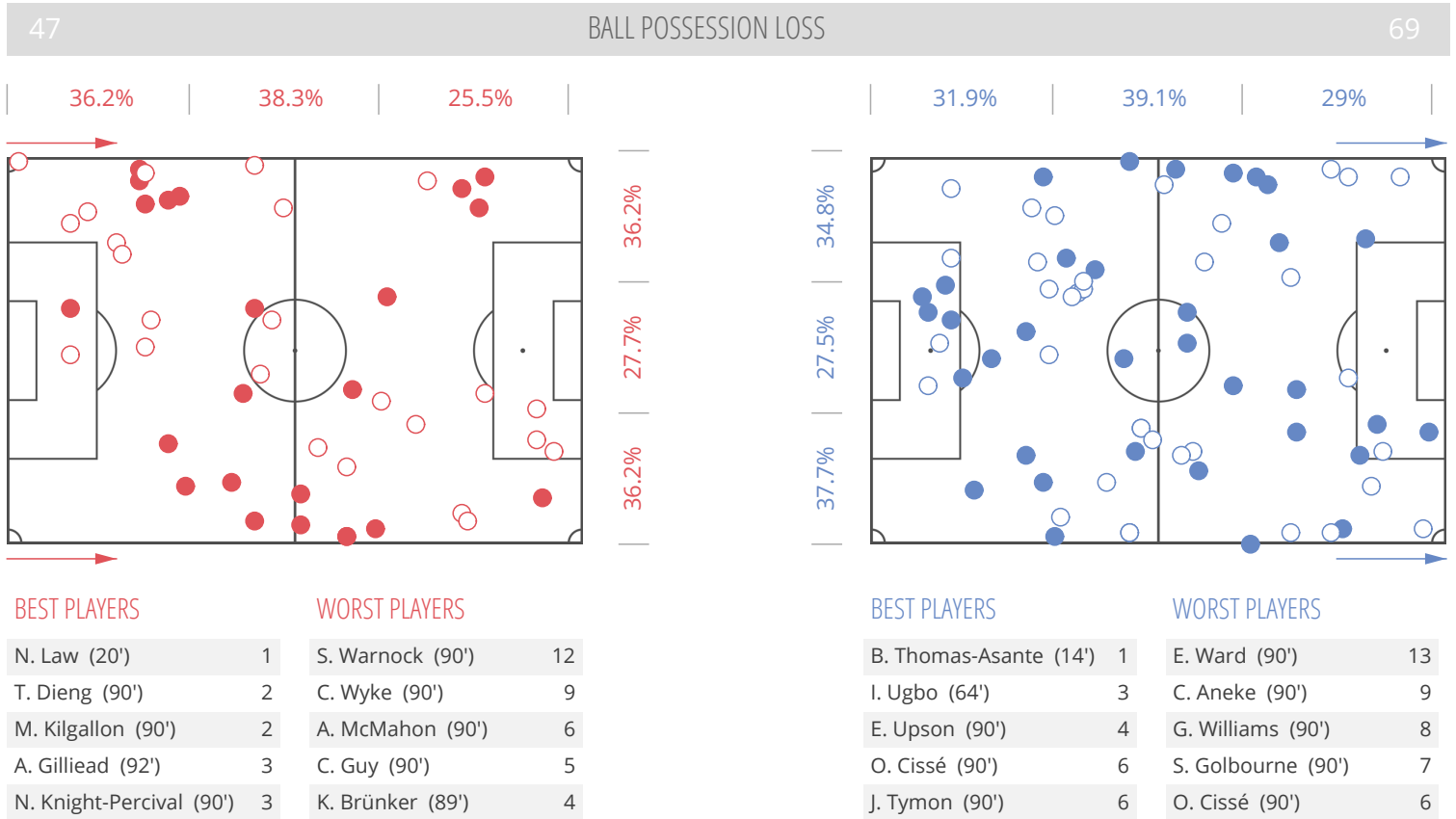
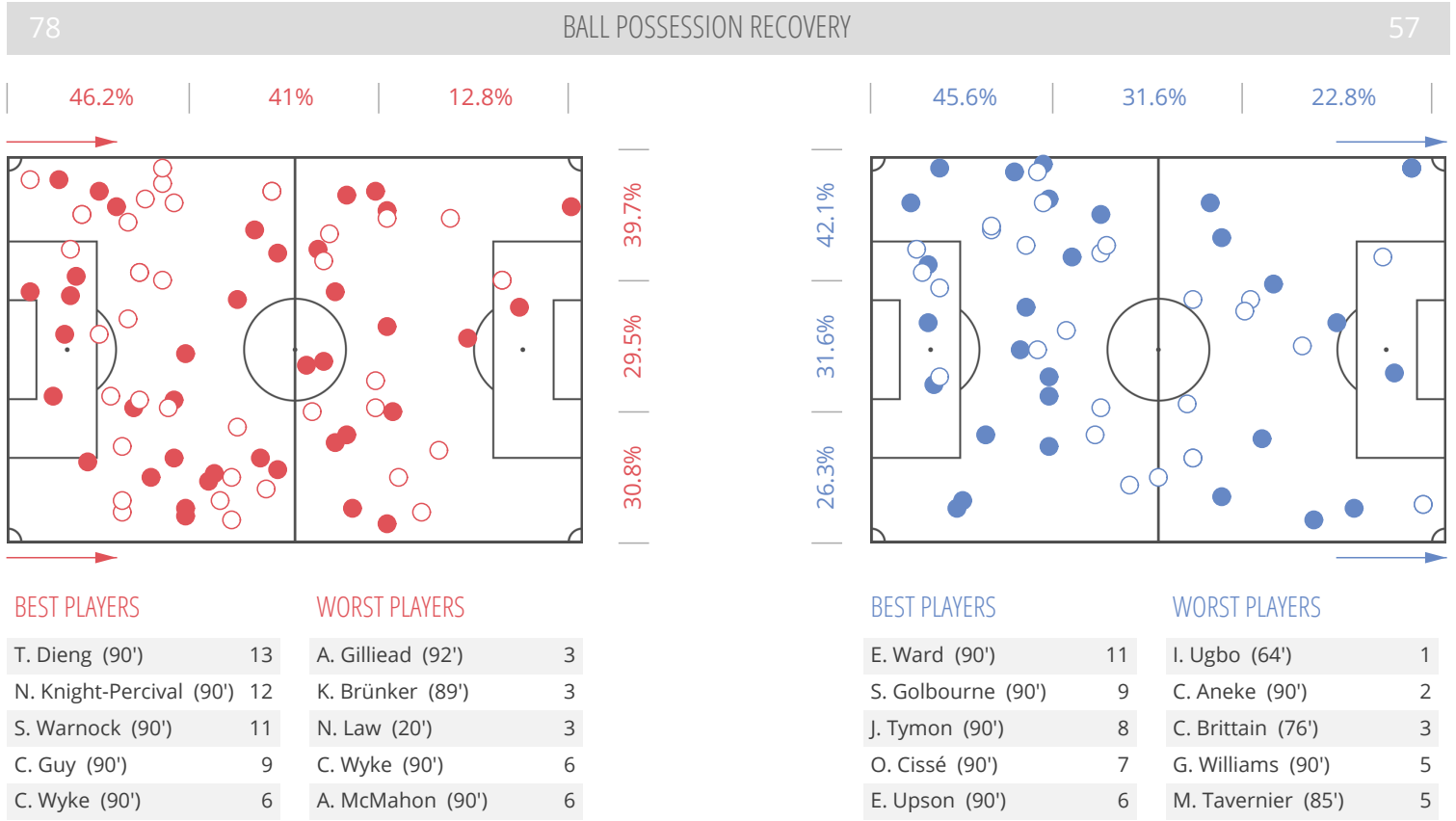
SECOND HALF



MILTON KEYNES DONS

FIRST HALF

SECOND HALF



TERRITORIAL COVERAGE



BRADFORD CITY

FIRST HALF

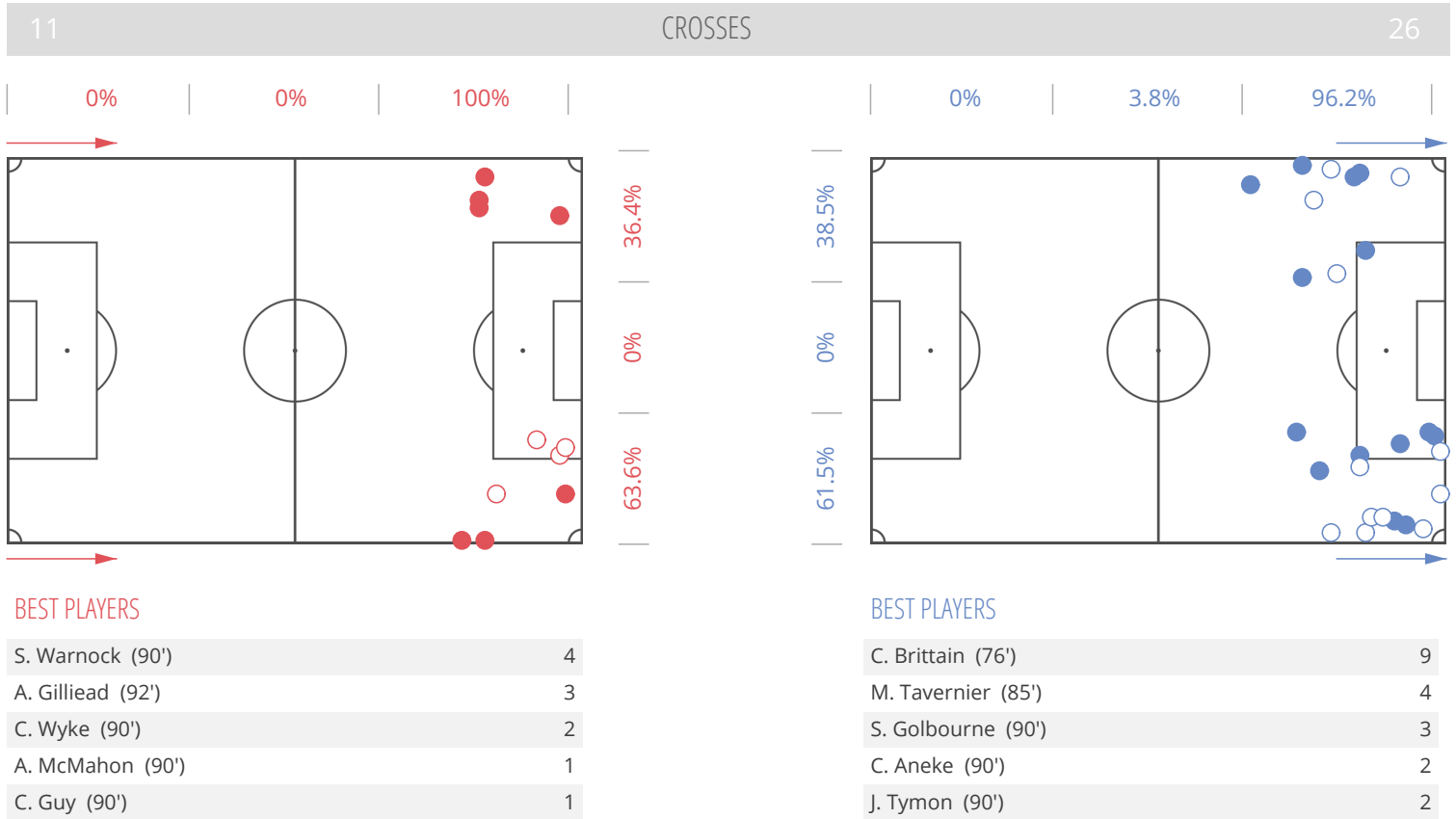
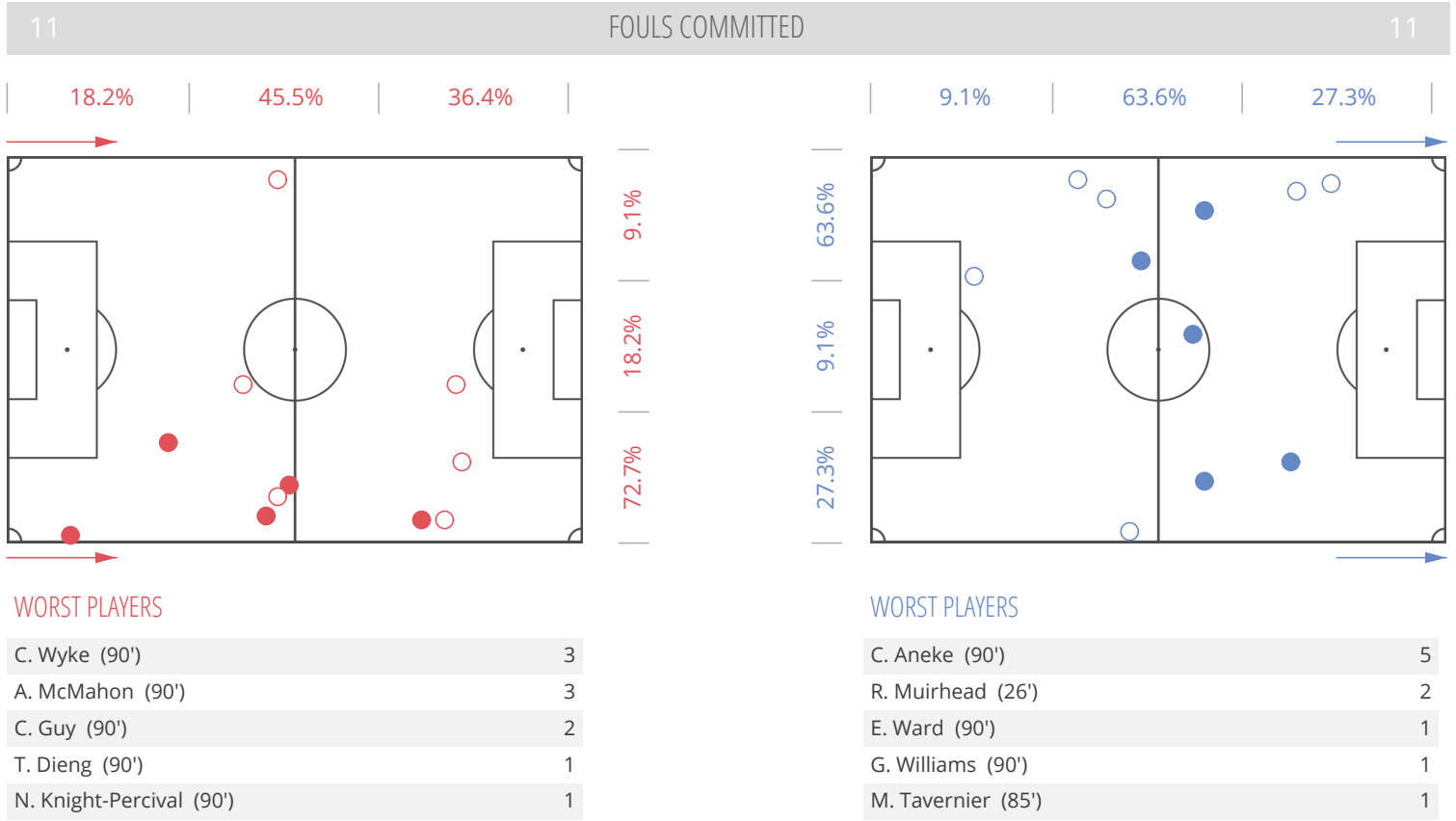
SECOND HALF



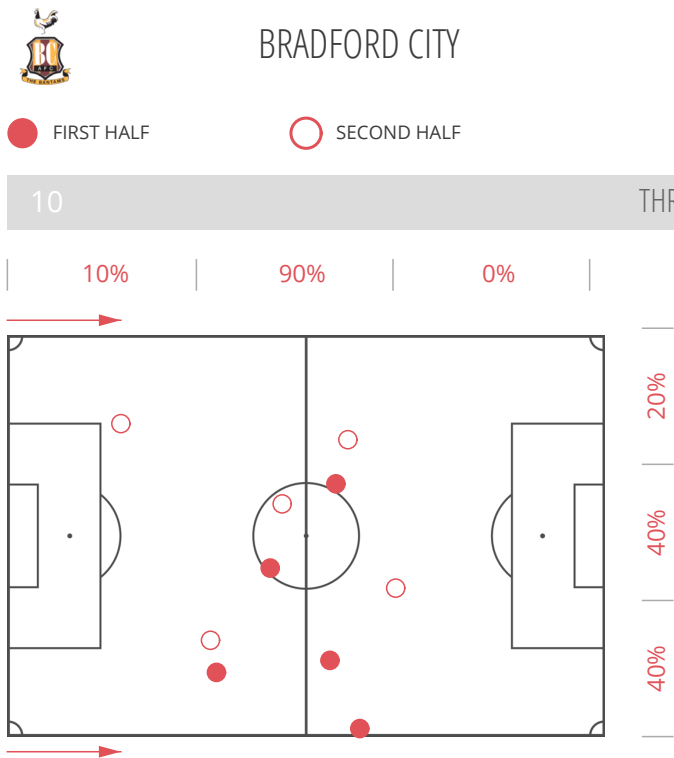
MILTON KEYNES DONS

FIRST HALF

SECOND HALF

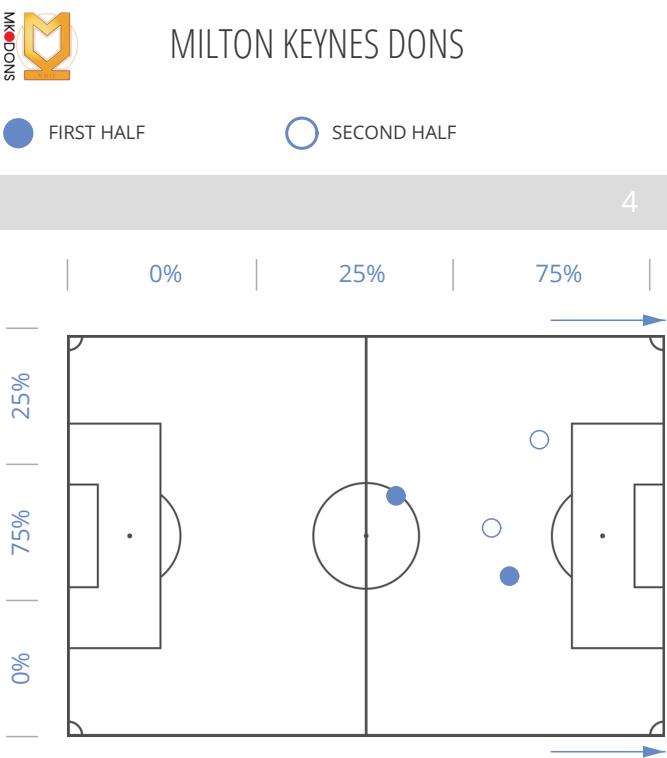


TERRITORIAL COVERAGE




BEST PLAYERS

| | |
|------------------|---|
| T. Dieng (90') | 3 |
| C. Wyke (90') | 3 |
| C. Guy (90') | 2 |
| A. McMahon (90') | 1 |
| M. Lund (70') | 1 |



BEST PLAYERS


| | |
|----------------|---|
| C. Aneke (90') | 2 |
| J. Tymon (90') | 1 |
| I. Ugbo (64') | 1 |



BRADFORD CITY

● FIRST HALF

○ SECOND HALF



MILTON KEYNES DONS

● WON

● NEUT.

● LOST

12

1 VS 1 DRIBBLING

32

● WON

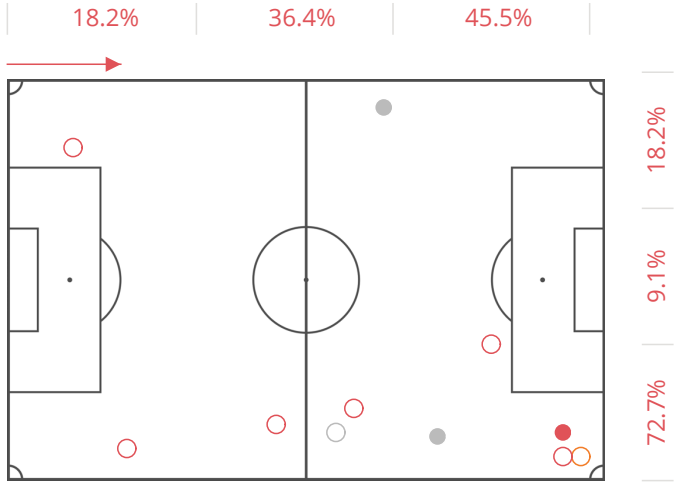
● NEUT.

● LOST

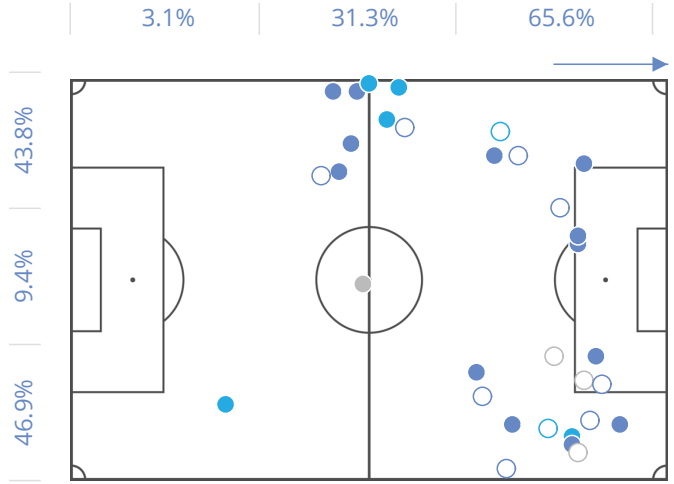
3.1%

31.3%

65.6%



| BEST PLAYERS | DUELS | WON | NEUT. | LOST |
|-------------------|-------|-----|-------|------|
| A. Gilliead (92') | 6 | 4 | 1 | 1 |
| A. McMahon (90') | 2 | 1 | 0 | 1 |
| C. Wyke (90') | 1 | 1 | 0 | 0 |
| S. Warnock (90') | 1 | 1 | 0 | 0 |
| K. Brünker (89') | 1 | 0 | 0 | 1 |

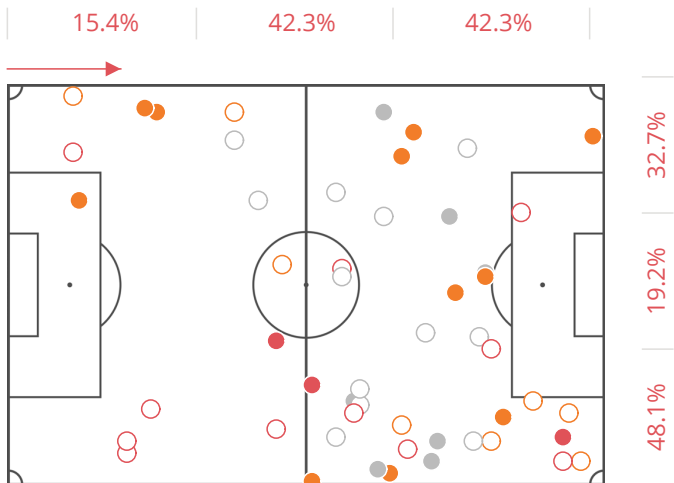


| BEST PLAYERS | DUELS | WON | NEUT. | LOST |
|--------------------|-------|-----|-------|------|
| C. Brittain (76') | 7 | 5 | 1 | 1 |
| I. Ugbo (64') | 7 | 4 | 3 | 0 |
| M. Tavernier (85') | 6 | 4 | 1 | 1 |
| C. Aneke (90') | 3 | 1 | 0 | 2 |
| R. Muirhead (26') | 3 | 2 | 1 | 0 |

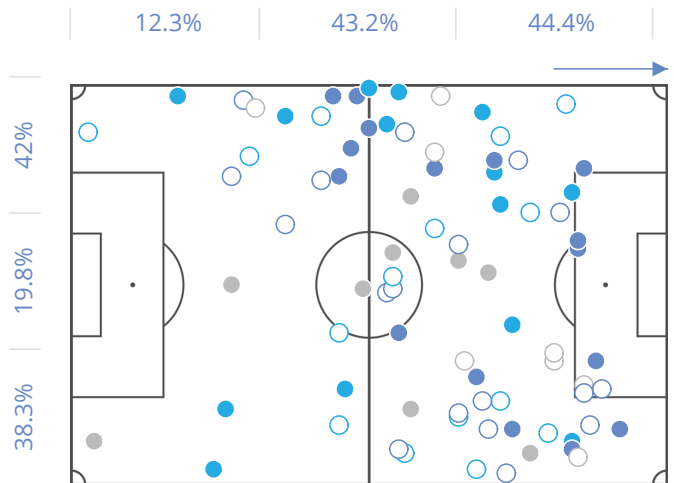
58

ATTACKING DUELS


88



| BEST PLAYERS | DUELS | WON | NEUT. | LOST |
|-------------------|-------|-----|-------|------|
| C. Wyke (90') | 14 | 2 | 4 | 8 |
| A. Gilliead (92') | 11 | 5 | 3 | 3 |
| A. McMahon (90') | 5 | 2 | 2 | 1 |
| K. Brünker (89') | 5 | 0 | 1 | 4 |
| S. Warnock (90') | 4 | 1 | 3 | 0 |



| BEST PLAYERS | DUELS | WON | NEUT. | LOST |
|--------------------|-------|-----|-------|------|
| C. Aneke (90') | 19 | 4 | 7 | 8 |
| I. Ugbo (64') | 18 | 8 | 7 | 3 |
| C. Brittain (76') | 11 | 5 | 3 | 3 |
| M. Tavernier (85') | 9 | 4 | 3 | 2 |
| J. Tymon (90') | 5 | 4 | 0 | 1 |




BRADFORD CITY

DUELS

● FIRST HALF

○ SECOND HALF



MILTON KEYNES DONS

WON

NEUT.

LOST

WON

NEUT.

LOST

88

DEFENSIVE DUELS

58

44.9%

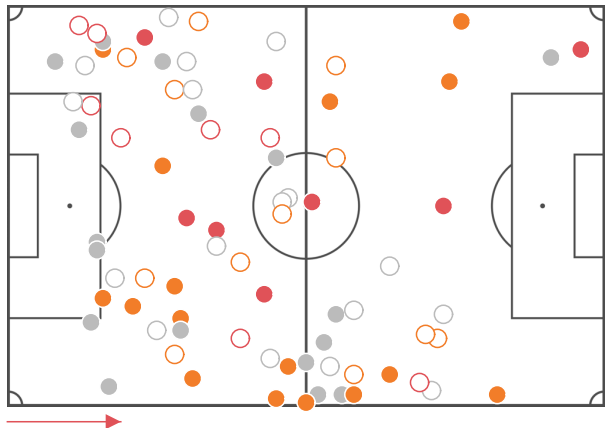
41%

14.1%

37.2%

19.2%

43.6%



46.2%

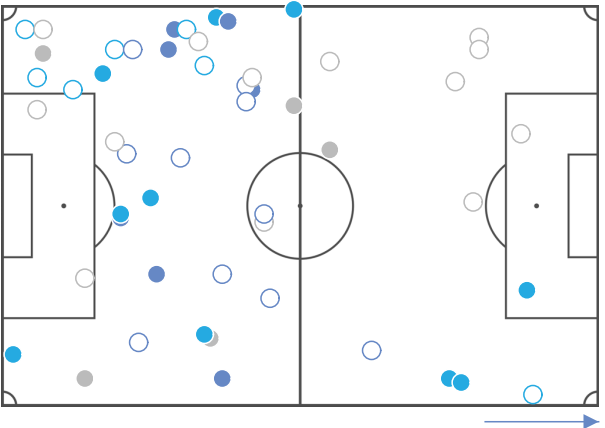
36.5%

17.3%

51.9%

19.2%

28.8%



| BEST PLAYERS | DUELS | WON | NEUT. | LOST |
|--------------------|-------|-----|-------|------|
| A. McMahon (90') | 13 | 1 | 5 | 7 |
| T. Dieng (90') | 11 | 1 | 6 | 4 |
| C. Guy (90') | 10 | 2 | 4 | 4 |
| M. Lund (70') | 10 | 3 | 3 | 4 |
| M. Kilgallon (90') | 9 | 4 | 3 | 2 |

| BEST PLAYERS | DUELS | WON | NEUT. | LOST |
|--------------------|-------|-----|-------|------|
| J. Tymon (90') | 10 | 3 | 4 | 3 |
| E. Ward (90') | 9 | 6 | 1 | 2 |
| M. Tavernier (85') | 9 | 2 | 4 | 3 |
| S. Golbourne (90') | 7 | 4 | 2 | 1 |
| C. Aneke (90') | 3 | 0 | 0 | 3 |

75

AERIAL DUELS

75

20%

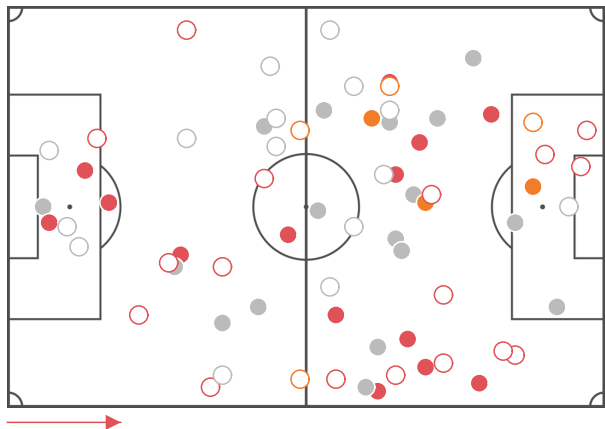
48.6%

31.4%

28.6%

41.4%

30%



31.9%

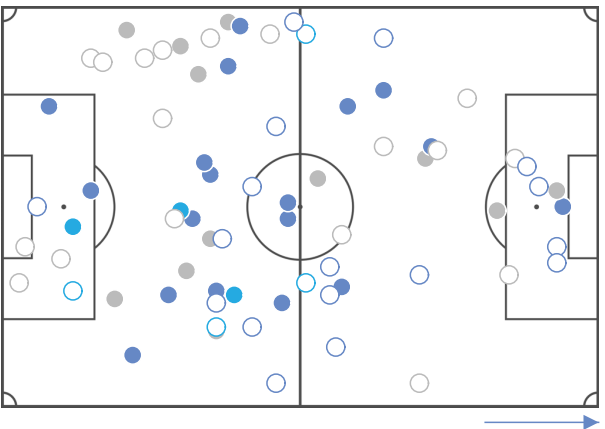
47.2%

20.8%

29.2%

43.1%

27.8%



| BEST PLAYERS | DUELS | WON | NEUT. | LOST |
|--------------------------|-------|-----|-------|------|
| K. Brunker (89') | 18 | 6 | 3 | 9 |
| A. Gilliead (92') | 14 | 10 | 1 | 3 |
| C. Wyke (90') | 13 | 5 | 1 | 7 |
| N. Knight-Percival (90') | 6 | 4 | 0 | 2 |
| T. Dieng (90') | 5 | 2 | 1 | 2 |

| BEST PLAYERS | DUELS | WON | NEUT. | LOST |
|-------------------|-------|-----|-------|------|
| E. Ward (90') | 16 | 9 | 2 | 5 |
| C. Aneke (90') | 13 | 7 | 0 | 6 |
| J. Tymon (90') | 13 | 4 | 1 | 8 |
| G. Williams (90') | 12 | 8 | 0 | 4 |
| O. Cissé (90') | 7 | 3 | 2 | 2 |

SECTION 4

12

DUELS GRID

BRADFORD CITY

| | 13. W. Sietsma | 2. G. Williams | 12. S. Golbourne | 20. J. Tymon | 25. C. Brittain | 15. E. Ward | 10. C. Aneke | 8. O. Cissé | 6. E. Upson | 17. M. Tavernier | 27. I. Ugbo | 14. K. Agard | 31. B. Thomas-Asante | 16. R. Muirhead |
|------------------------|----------------|----------------|------------------|--------------|-----------------|-------------|--------------|-------------|-------------|------------------|-------------|--------------|----------------------|-----------------|
| 1. C. Doyle | | | | | | | | | | 1 | | | | |
| 15. S. Warnock | | 1 | | | 4 | | 4 | | | 7 | | 1 | | |
| 29. A. McMahon | | | | 4 | | | | | | | 13 | | | 3 |
| 8. T. Dieng | | 2 | | 1 | | 1 | 5 | 5 | 2 | 2 | 3 | | 2 | |
| 22. N. Knight-Percival | | | | | | 1 | 12 | 1 | | 3 | 1 | | | |
| 5. M. Kilgallon | | | | | | 1 | 12 | | | 5 | | | 1 | |
| 18. C. Guy | | 1 | | 1 | 1 | | 2 | 1 | 3 | 1 | 3 | | 1 | 1 |
| 17. A. Gilliead | | | 1 | 20 | | | | | 2 | 1 | | | | 1 |
| 30. M. Lund | | 1 | | | 9 | 2 | | 1 | | 4 | 1 | | | |
| 21. K. Brünker | | 5 | 3 | 1 | 2 | 16 | | 1 | 2 | 1 | 1 | | | |
| 9. C. Wyke | 1 | 12 | 9 | 1 | 1 | 10 | | 5 | 1 | | 1 | | | 2 |
| 7. N. Law | | | | | | | 1 | | | | | | 1 | |
| 14. S. McCartan | | | | | | | | | | | | | | |
| 11. D. Poleon | | 1 | 1 | | | | | | | | | | | |

△ AIR CHALL.

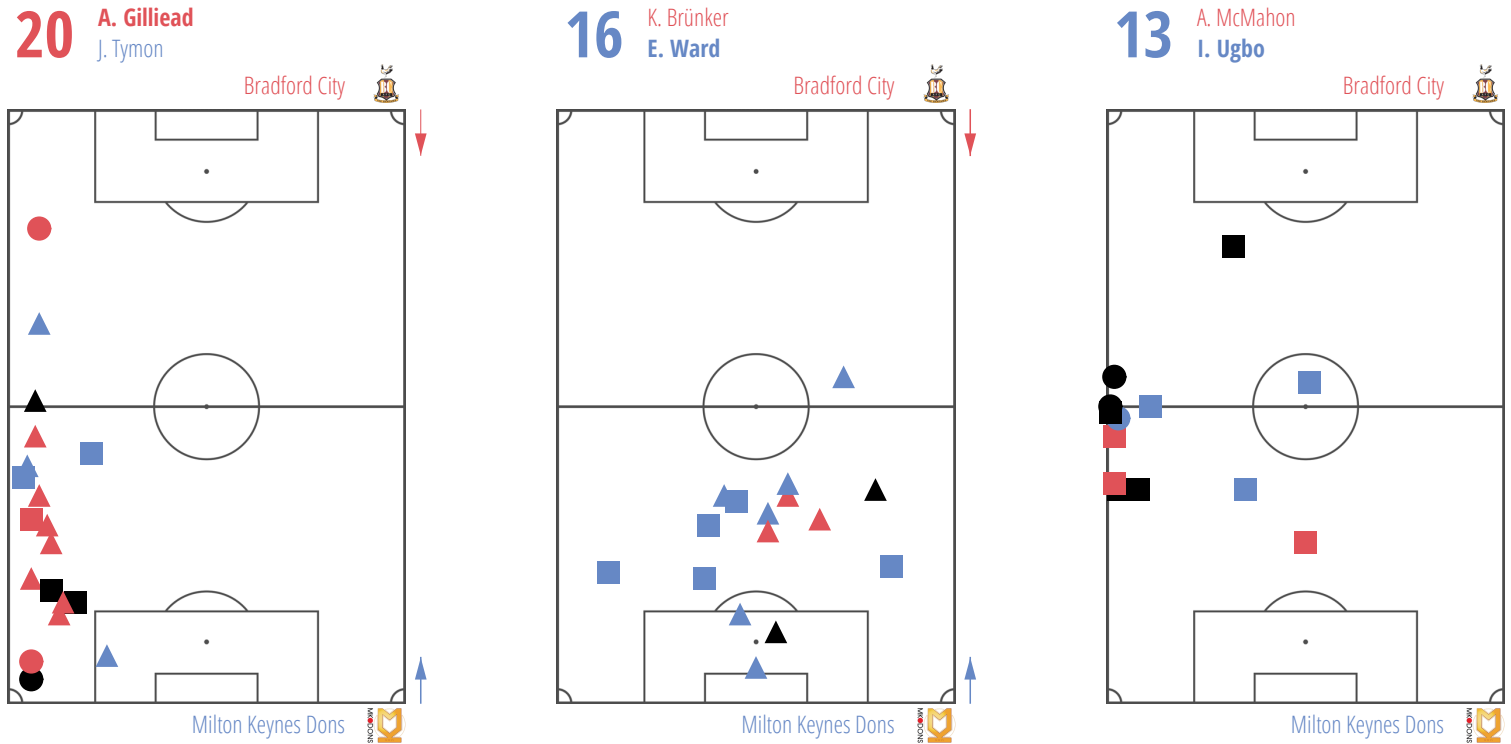
□ GROUND CHALL.

○ DRIBBLES

● WON BY BRADFORD CITY

● WON BY MILTON KEYNES DONS

● NEUTRAL DUELS



DUELS GRID

 WON BY BRADFORD CITY

 WON BY MILTON KEYNES DONS

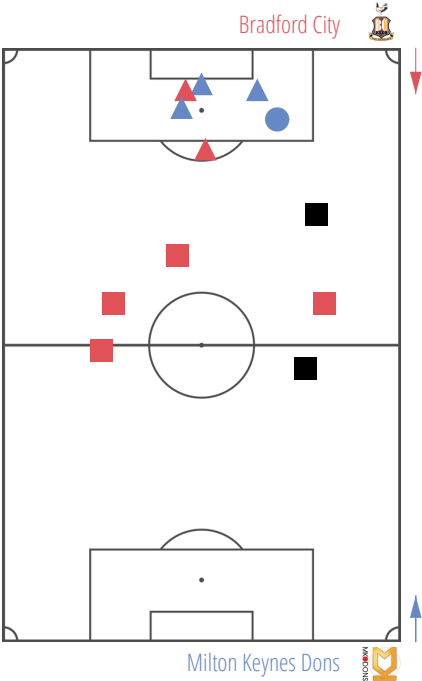
 NEUTRAL DUELS

 AIR CHALL.

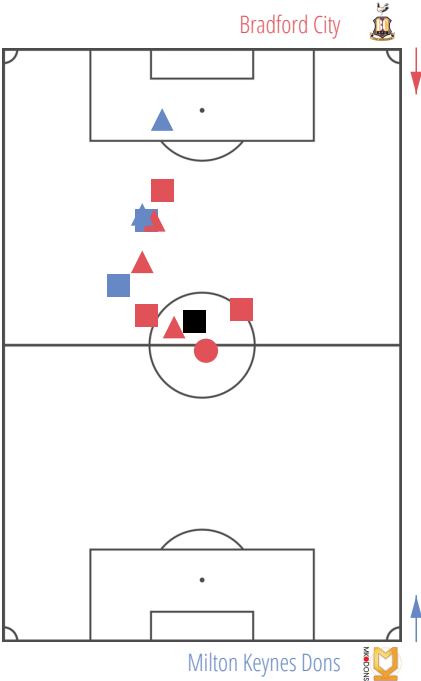
 GROUND CHALL.

 DRIBBLES

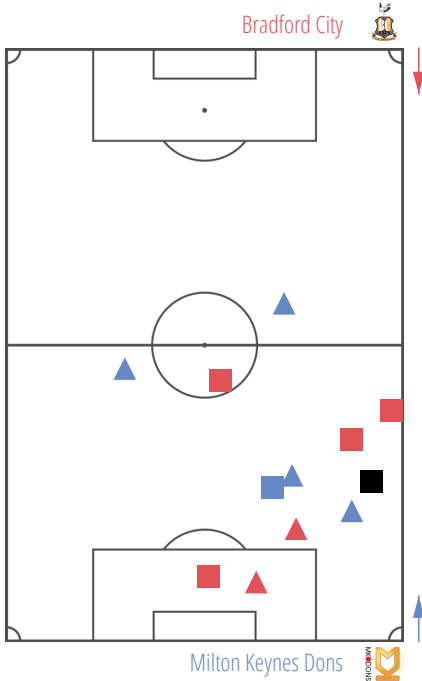
12 M. Kilgallon
C. Aneke



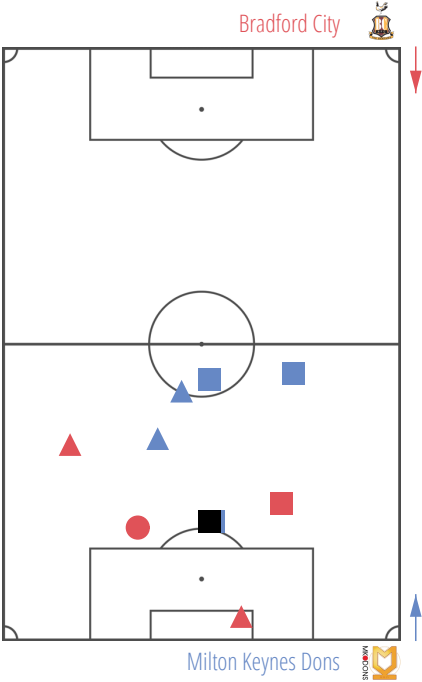
12 N. Knight-Percival
C. Aneke



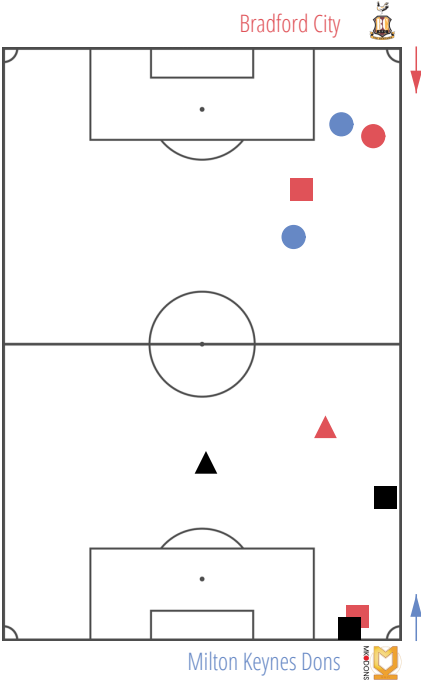
12 C. Wyke
G. Williams



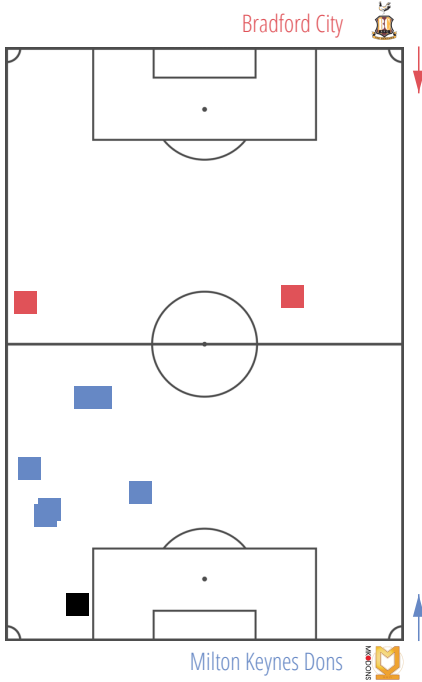
10 C. Wyke
E. Ward



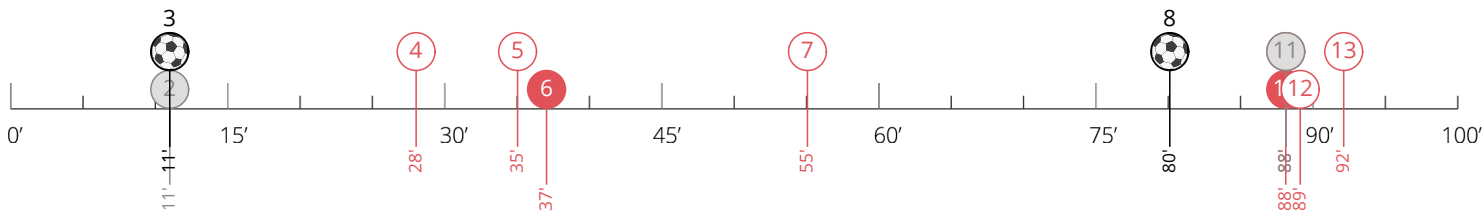
9 M. Lund
C. Brittain



9 C. Wyke
S. Golbourne



BRADFORD CITY: GOALS AND STRIKES

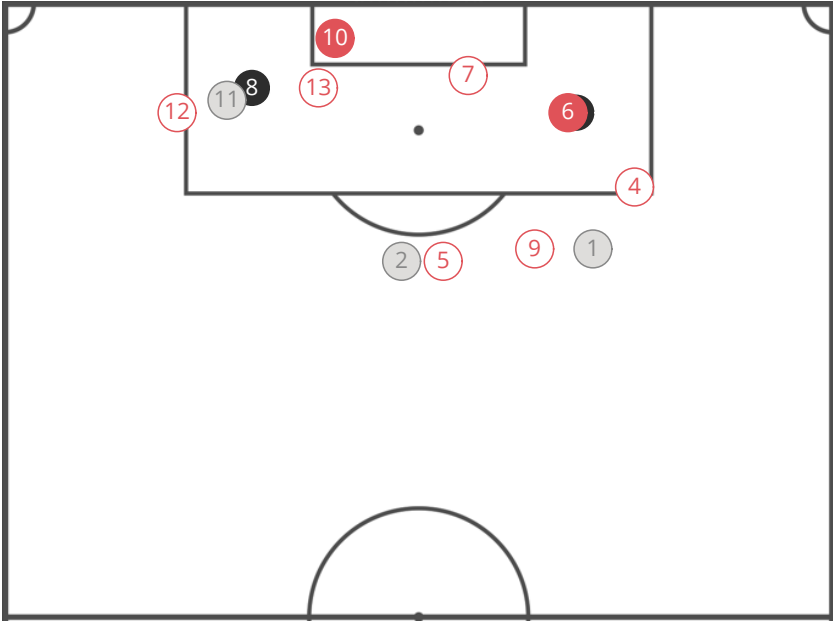
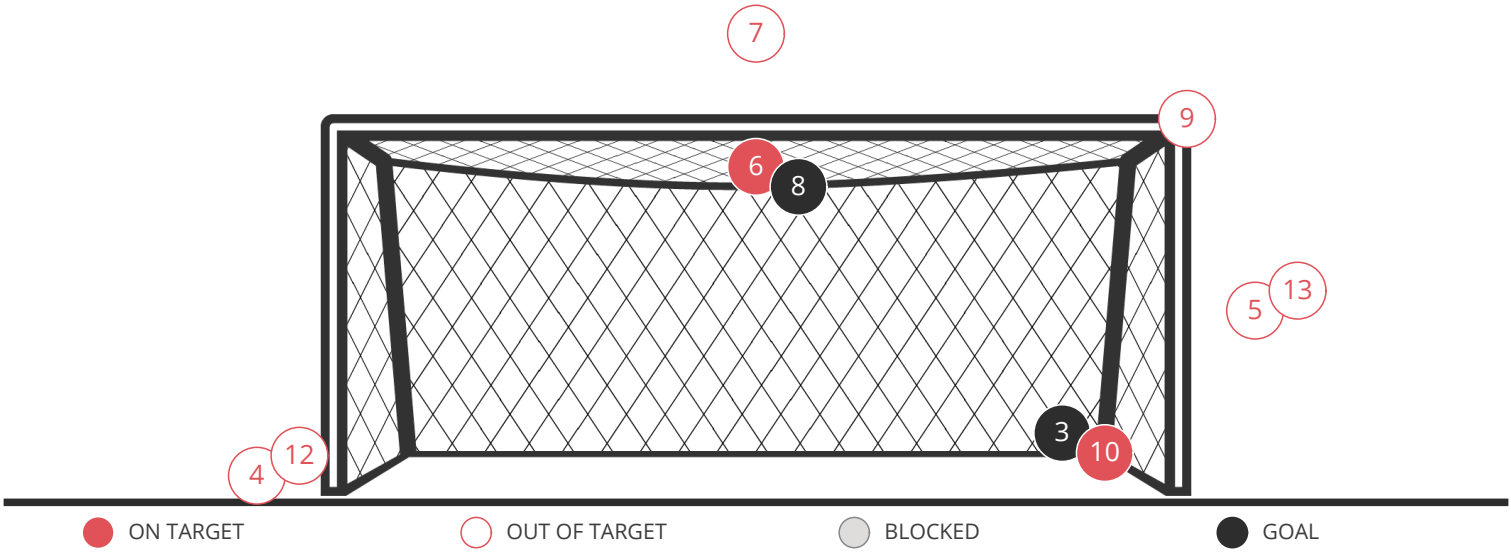


13
SHOTS

4
ON TARGET

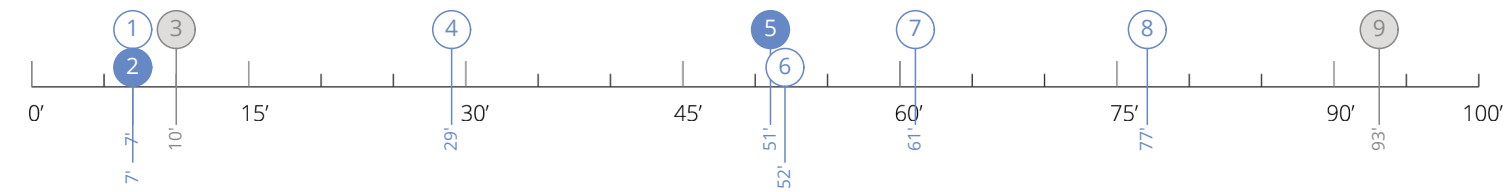
3
BLOCKED

2
GOALS



| PLAYERS | | FOOT |
|---------|--------------------|----------|
| 1 | A. Gilliead | Left |
| 2 | C. Guy | Right |
| 3 | T. Dieng | Heading |
| 4 | A. Gilliead | Right |
| 5 | M. Lund | Right |
| 6 | K. Brünker | Right |
| 7 | K. Brünker | Right |
| 8 | N. Knight-Percival | Left |
| 9 | A. McMahon | FK Right |
| 10 | C. Wyke | Heading |
| 11 | T. Dieng | Left |
| 12 | A. McMahon | Right |
| 13 | C. Wyke | Heading |

MILTON KEYNES DONS: GOALS AND STRIKES

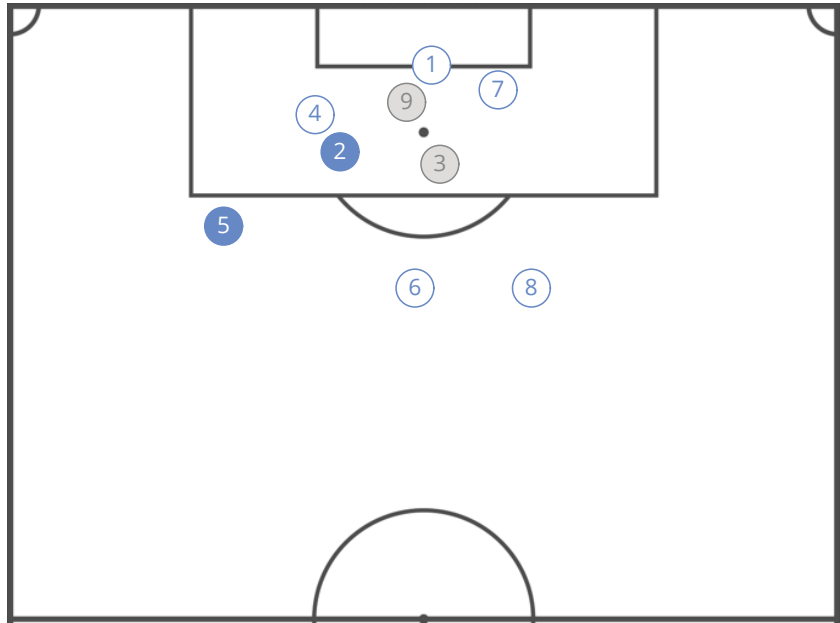
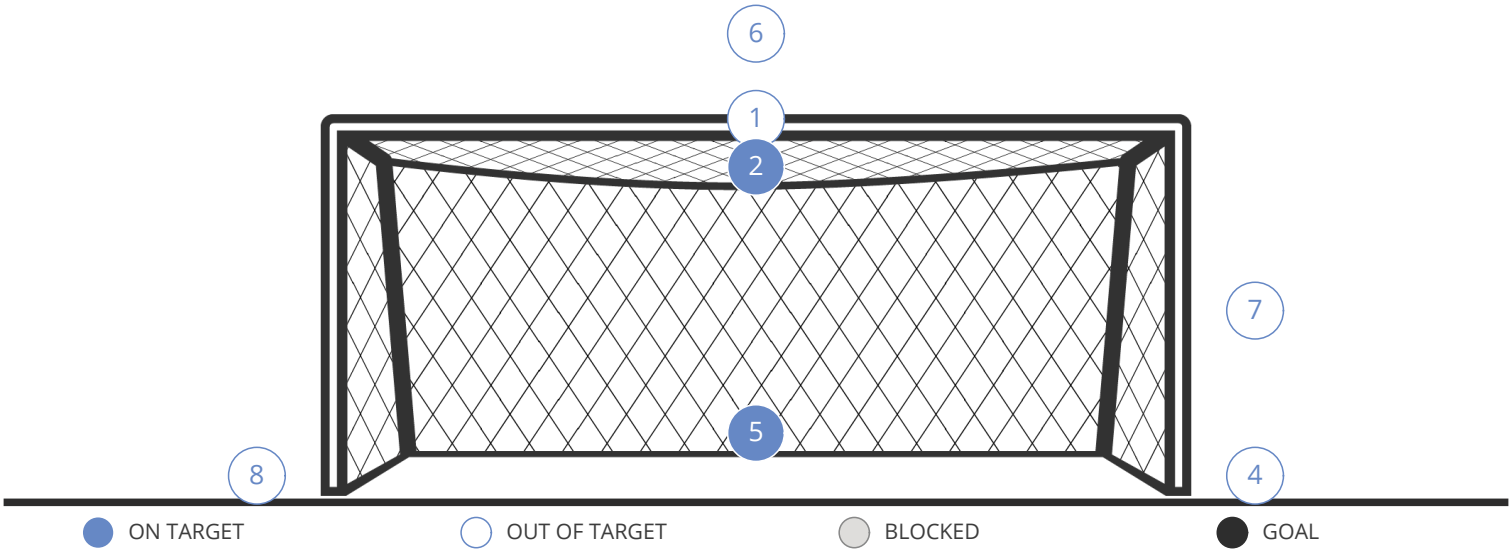


9
SHOTS

2
ON TARGET

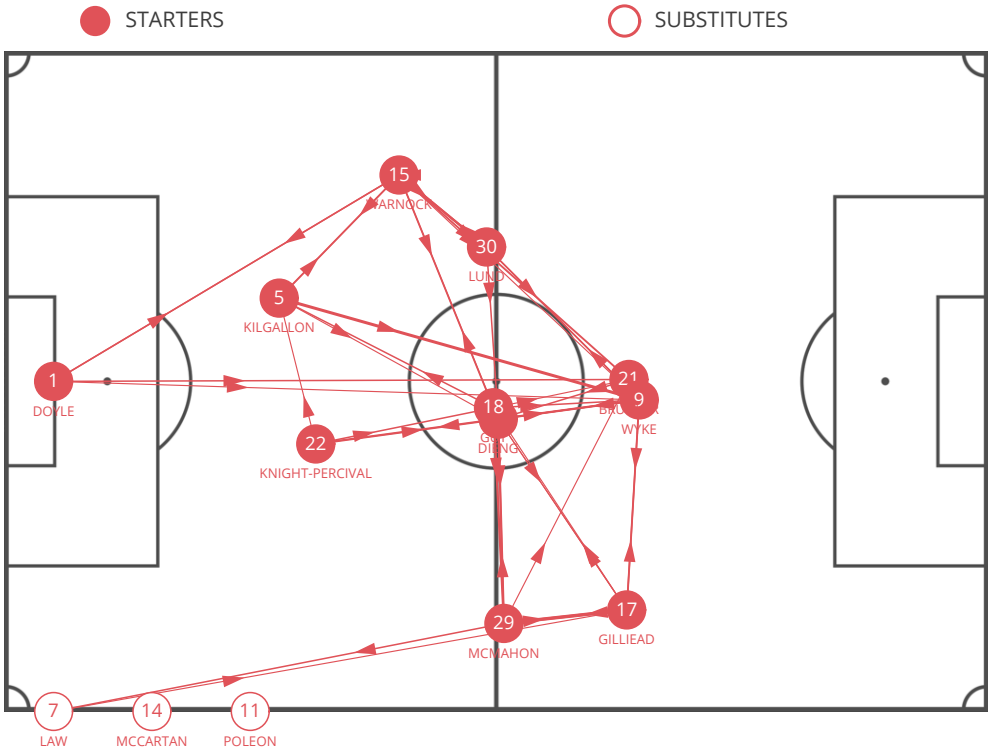
2
BLOCKED

0
GOALS



| PLAYERS | | FOOT |
|---------|--------------|---------|
| 1 | C. Aneke | Heading |
| 2 | E. Upson | Heading |
| 3 | C. Aneke | Left |
| 4 | M. Tavernier | Left |
| 5 | J. Tymon | Left |
| 6 | O. Cissé | Left |
| 7 | C. Aneke | Heading |
| 8 | E. Upson | Right |
| 9 | C. Aneke | Right |

BRADFORD CITY: PASSES



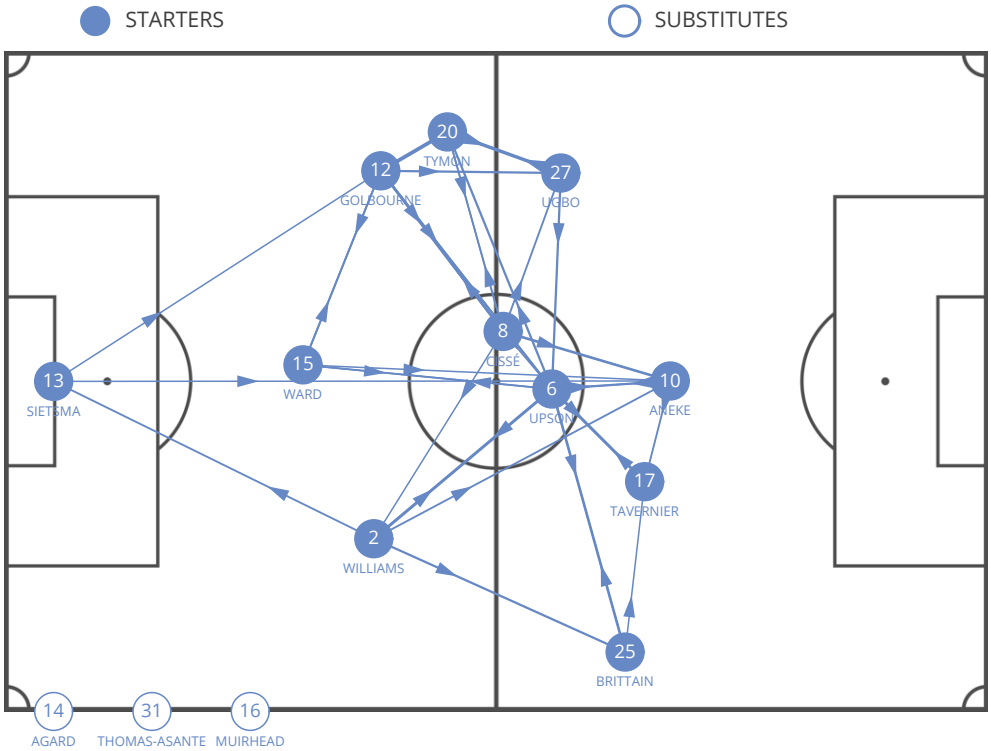
| | 1. C. Doyle | 15. S. Warnock | 29. A. McMahon | 8. T. Dieng | 22. N. Knight-Percival | 5. M. Kilgallon | 18. C. Guy | 17. A. Gilliead | 30. M. Lund | 21. K. Brünker | 9. C. Wyke | 7. N. Law | 14. S. McCartan | 11. D. Poleon |
|------------------------|-------------|----------------|----------------|-------------|------------------------|-----------------|------------|-----------------|-------------|----------------|------------|-----------|-----------------|---------------|
| 1. C. Doyle | | 4 (1) | | | | | | | 2 (2) | 4 (4) | 3 (3) | | | |
| 15. S. Warnock | 4 | | | 3 | 2 | 3 | 2 | 1 | 6 (1) | 5 (2) | 3 (1) | 2 | | |
| 29. A. McMahon | 1 | | | 4 (1) | | | 1 | 7 | | 3 (1) | 2 (1) | 4 | | |
| 8. T. Dieng | 2 | 2 | 6 (1) | | 3 | 2 | 5 | 3 | 1 | 2 | 4 | 1 | | 1 |
| 22. N. Knight-Percival | 2 | 1 | 1 | 2 | | 3 | 4 (1) | | | 2 (2) | 6 (1) | 1 | | |
| 5. M. Kilgallon | | 5 | 2 (1) | 3 | 1 | | 2 | 1 (1) | 2 (1) | | 8 (3) | | | |
| 18. C. Guy | | 5 | 6 | 2 | 2 | 4 | | | 2 | 3 | 4 | | | |
| 17. A. Gilliead | | 1 | 9 | 3 | | | 3 | | | 1 (1) | 5 | 1 | | |
| 30. M. Lund | 1 | 6 | 2 | 4 | | | | 1 | | 1 (1) | 4 (1) | | | |
| 21. K. Brünker | | | | 4 | | | 1 | 2 | | | 2 | | | |
| 9. C. Wyke | | 1 | | 4 | 1 | | 2 | 4 | 4 | 6 | | | | 1 |
| 7. N. Law | | 2 | 2 | | | | 2 | 3 | | | 1 (1) | | | |
| 14. S. McCartan | | | | | | | | | | | | | | |
| 11. D. Poleon | | | | | | | | | | | | | | |

PASSES RECEIVED BY THE PLAYER

(*) HIGH PASSES

PASSES MADE BY THE PLAYER

MILTON KEYNES DONS: PASSES



| | 13. W. Sietsma | 2. G. Williams | 12. S. Golbourne | 20. J. Tymon | 25. C. Brittain | 15. E. Ward | 10. C. Aneke | 8. O. Cissé | 6. E. Upson | 17. M. Tavernier | 27. I. Ugbo | 14. K. Agard | 31. B. Thomas-Asante | 16. R. Muirhead |
|----------------------|----------------|----------------|------------------|--------------|-----------------|-------------|--------------|-------------|-------------|------------------|-------------|--------------|----------------------|-----------------|
| 13. W. Sietsma | | 2 | 4 | | | 2 | 4 (4) | 1 (1) | | | | | | |
| 2. G. Williams | 5 | | 1 | 1 | 6 | 2 | 5 (5) | 1 | 4 | 1 | 1 (1) | | | |
| 12. S. Golbourne | 2 | 2 | | 10 | 1 (1) | 5 | 1 (1) | 7 | 6 | 1 | 6 (1) | | | 2 |
| 20. J. Tymon | 1 | 1 | 3 | | | 2 | 1 | 4 (1) | 3 | 2 | 9 (1) | | | 2 |
| 25. C. Brittain | | 2 | | | | | | | 4 | 4 | | | | |
| 15. E. Ward | 1 | 3 | 5 | 2 | 2 (2) | | 4 (3) | 3 | 4 | 1 (1) | | 1 (1) | | |
| 10. C. Aneke | | | | 1 | 3 | | | | 4 | 5 | 3 | | | |
| 8. O. Cissé | | 4 | 5 | 5 | 1 | 2 | 7 (1) | | 4 | 1 | 5 | | | |
| 6. E. Upson | | 8 | 5 | 6 (1) | 7 (1) | 5 | 6 (1) | 1 | | 8 | 1 | | 2 (2) | 2 |
| 17. M. Tavernier | | 2 | 1 | 3 | 3 | | | 3 | 5 | | 1 | | | |
| 27. I. Ugbo | | | 1 | 4 | | | 3 | 2 | 6 | | | | | |
| 14. K. Agard | | | | | | | | | | | | | | |
| 31. B. Thomas-Asante | | | | | | | | | | | | | | |
| 16. R. Muirhead | | | | 1 | | | | 2 | 2 | 1 (1) | | | | |

PASSES RECEIVED BY THE PLAYER

PASSES MADE BY THE PLAYER

(*) HIGH PASSES

BRADFORD CITY: PLAYER EVENTS

| | | MINUTES PLAYED | GOALS /GOALS ON PENALTY | ASSISTS | TOUCHES | SHOTS /ON TARGET | FOULS COMM. / CONCEDED | YELLOW CARDS / RED CARDS | OFFSIDES | FREE K. SHOTS / ON TARGET | FREE K. CROSS / ACCURATE | CORNERS / ACCURATE | THROW INS / ACCURATE |
|----|--------------------|-------------------|-------------------------------|---------|---------|---------------------|---------------------------|-----------------------------|----------|------------------------------|-----------------------------|-----------------------|-------------------------|
| 1 | C. Doyle | 90 | 0 / 0 | 0 | 21 | 0 / 0 | 0 / 0 | 0 / 0 | 0 | 0 / 0 | 0 / 0 | 0 / 0 | 0 / 0 |
| 15 | S. Warnock | 90 | 0 / 0 | 0 | 63 | 0 / 0 | 0 / 1 | 0 / 0 | 0 | 0 / 0 | 1 / 1 | 0 / 0 | 9 / 4 |
| 29 | A. McMahon | 90 | 0 / 0 | 1 | 35 | 2 / 0 | 3 / 1 | 1 / 0 | 0 | 1 / 0 | 2 / 2 | 3 / 2 | 22 / 19 |
| 8 | T. Dieng | 90 | 1 / 0 | 0 | 50 | 2 / 1 | 1 / 1 | 0 / 0 | 0 | 0 / 0 | 0 / 0 | 0 / 0 | 0 / 0 |
| 22 | N. Knight-Percival | 90 | 1 / 0 | 0 | 34 | 1 / 1 | 1 / 1 | 0 / 0 | 0 | 0 / 0 | 0 / 0 | 0 / 0 | 0 / 0 |
| 5 | M. Kilgallon | 90 | 0 / 0 | 0 | 37 | 0 / 0 | 0 / 1 | 0 / 0 | 0 | 0 / 0 | 0 / 0 | 0 / 0 | 0 / 0 |
| 18 | C. Guy | 90 | 0 / 0 | 0 | 44 | 1 / 0 | 2 / 0 | 1 / 0 | 0 | 0 / 0 | 0 / 0 | 0 / 0 | 0 / 0 |
| 17 | A. Gilliead | 92 | 0 / 0 | 0 | 36 | 2 / 0 | 0 / 2 | 0 / 0 | 0 | 0 / 0 | 0 / 0 | 0 / 0 | 0 / 0 |
| 30 | M. Lund | 70 | 0 / 0 | 0 | 28 | 1 / 0 | 0 / 1 | 0 / 0 | 0 | 0 / 0 | 0 / 0 | 0 / 0 | 0 / 0 |
| 21 | K. Brünker | 89 | 0 / 0 | 0 | 21 | 2 / 1 | 1 / 0 | 0 / 0 | 0 | 0 / 0 | 0 / 0 | 0 / 0 | 0 / 0 |
| 9 | C. Wyke | 90 | 0 / 0 | 0 | 37 | 2 / 1 | 3 / 2 | 0 / 0 | 0 | 0 / 0 | 0 / 0 | 0 / 0 | 0 / 0 |
| 7 | N. Law | 20 | 0 / 0 | 0 | 14 | 0 / 0 | 0 / 1 | 0 / 0 | 0 | 0 / 0 | 0 / 0 | 1 / 1 | 0 / 0 |
| 14 | S. McCartan | -2 | 0 / 0 | 0 | 0 | 0 / 0 | 0 / 0 | 0 / 0 | 0 | 0 / 0 | 0 / 0 | 0 / 0 | 0 / 0 |
| 11 | D. Poleon | 1 | 0 / 0 | 0 | 0 | 0 / 0 | 0 / 0 | 0 / 0 | 0 | 0 / 0 | 0 / 0 | 0 / 0 | 1 / 1 |

| | | DUELS / WON | GROUND CHALL. / WON | AIR CHALL. / WON | ATTACKING CHALL. | DEFENDING CHALL. | DRIBBLES | TACKLES | DEFENDING 1V1 | RECOVERED IN OPP. HALF | LOSSES IN OPP. HALF |
|----|--------------------|-------------|------------------------|---------------------|---------------------|---------------------|----------|---------|---------------|---------------------------|------------------------|
| 1 | C. Doyle | 1 / 1 | 1 / 1 | 0 / 0 | 1 | 0 | 1 | 0 | 0 | 0 | 0 |
| 15 | S. Warnock | 18 / 6 | 14 / 5 | 4 / 1 | 4 | 7 | 1 | 0 | 4 | 3 | 3 |
| 29 | A. McMahon | 21 / 5 | 21 / 5 | 0 / 0 | 5 | 13 | 2 | 1 | 5 | 1 | 5 |
| 8 | T. Dieng | 25 / 8 | 20 / 6 | 5 / 2 | 2 | 11 | 0 | 1 | 3 | 8 | 0 |
| 22 | N. Knight-Percival | 18 / 8 | 12 / 4 | 6 / 4 | 1 | 6 | 0 | 2 | 4 | 2 | 0 |
| 5 | M. Kilgallon | 19 / 8 | 14 / 6 | 5 / 2 | 2 | 9 | 0 | 1 | 3 | 1 | 0 |
| 18 | C. Guy | 17 / 3 | 16 / 3 | 1 / 0 | 2 | 10 | 0 | 3 | 3 | 3 | 2 |
| 17 | A. Gilliead | 29 / 17 | 15 / 7 | 14 / 10 | 11 | 3 | 6 | 0 | 2 | 1 | 2 |
| 30 | M. Lund | 21 / 5 | 17 / 4 | 4 / 1 | 3 | 10 | 0 | 0 | 6 | 2 | 0 |
| 21 | K. Brünker | 33 / 8 | 15 / 2 | 18 / 6 | 5 | 5 | 1 | 0 | 1 | 2 | 3 |
| 9 | C. Wyke | 46 / 15 | 33 / 10 | 13 / 5 | 14 | 3 | 1 | 1 | 1 | 4 | 7 |
| 7 | N. Law | 2 / 1 | 2 / 1 | 0 / 0 | 1 | 1 | 0 | 0 | 1 | 1 | 0 |
| 14 | S. McCartan | 0 / 0 | 0 / 0 | 0 / 0 | 0 | 0 | 0 | 0 | 0 | 0 | 0 |
| 11 | D. Poleon | 3 / 0 | 3 / 0 | 0 / 0 | 2 | 0 | 0 | 0 | 0 | 0 | 0 |

| | | PASSES / ACCURATE | % ACCURATE | LONG PASSES / ACCURATE | THROUGH PASSES / ACCURATE | IN THE BOX / ACCURATE | CROSSES / ACCURATE | CROSS FROM BYLINE | CROSS HIGH | CROSS LOW | CROSS BLOCKED |
|----|--------------------|----------------------|------------|---------------------------|---------------------------------|--------------------------|-----------------------|----------------------|------------|-----------|---------------|
| 1 | C. Doyle | 19 / 13 | 69 | 15 / 10 | 0 / 0 | 0 / 0 | 0 / 0 | 0 | 0 | 0 | 0 |
| 15 | S. Warnock | 51 / 35 | 69 | 9 / 3 | 0 / 0 | 0 / 0 | 4 / 1 | 1 | 3 | 1 | 0 |
| 29 | A. McMahon | 32 / 23 | 72 | 7 / 3 | 1 / 0 | 0 / 0 | 1 / 1 | 0 | 1 | 0 | 0 |
| 8 | T. Dieng | 46 / 34 | 74 | 3 / 1 | 3 / 1 | 0 / 0 | 0 / 0 | 0 | 0 | 0 | 0 |
| 22 | N. Knight-Percival | 29 / 22 | 76 | 8 / 4 | 0 / 0 | 0 / 0 | 0 / 0 | 0 | 0 | 0 | 0 |
| 5 | M. Kilgallon | 29 / 25 | 87 | 8 / 6 | 0 / 0 | 0 / 0 | 0 / 0 | 0 | 0 | 0 | 0 |
| 18 | C. Guy | 38 / 28 | 74 | 2 / 0 | 2 / 0 | 1 / 1 | 1 / 1 | 1 | 0 | 1 | 0 |
| 17 | A. Gilliead | 31 / 24 | 78 | 2 / 1 | 0 / 0 | 0 / 0 | 3 / 1 | 1 | 2 | 1 | 0 |
| 30 | M. Lund | 25 / 19 | 76 | 2 / 2 | 1 / 0 | 0 / 0 | 0 / 0 | 0 | 0 | 0 | 0 |
| 21 | K. Brünker | 16 / 10 | 63 | 0 / 0 | 0 / 0 | 2 / 0 | 0 / 0 | 0 | 0 | 0 | 0 |
| 9 | C. Wyke | 31 / 23 | 75 | 0 / 0 | 3 / 1 | 2 / 0 | 2 / 0 | 2 | 0 | 1 | 1 |
| 7 | N. Law | 12 / 10 | 84 | 2 / 1 | 0 / 0 | 0 / 0 | 0 / 0 | 0 | 0 | 0 | 0 |
| 14 | S. McCartan | 0 / 0 | 0 | 0 / 0 | 0 / 0 | 0 / 0 | 0 / 0 | 0 | 0 | 0 | 0 |
| 11 | D. Poleon | 0 / 0 | 0 | 0 / 0 | 0 / 0 | 0 / 0 | 0 / 0 | 0 | 0 | 0 | 0 |

MILTON KEYNES DONS: PLAYER EVENTS

| | | MINUTES PLAYED | GOALS /GOALS ON PENALTY | ASSISTS | TOUCHES | SHOTS /ON TARGET | FOULS COMM. / CONCEDED | YELLOW CARDS / RED CARDS | OFFSIDES | FREE K. SHOTS / ON TARGET | FREE K. CROSS / ACCURATE | CORNERS / ACCURATE | THROW INS / ACCURATE |
|----|------------------|-------------------|-------------------------------|---------|---------|---------------------|---------------------------|-----------------------------|----------|------------------------------|-----------------------------|-----------------------|-------------------------|
| 13 | W. Sietsma | 90 | 0 / 0 | 0 | 17 | 0 / 0 | 0 / 0 | 0 / 0 | 0 | 0 / 0 | 0 / 0 | 0 / 0 | 0 / 0 |
| 2 | G. Williams | 90 | 0 / 0 | 0 | 42 | 0 / 0 | 1 / 1 | 0 / 0 | 0 | 0 / 0 | 0 / 0 | 0 / 0 | 10 / 6 |
| 12 | S. Golbourne | 90 | 0 / 0 | 0 | 73 | 0 / 0 | 0 / 2 | 0 / 0 | 0 | 0 / 0 | 1 / 0 | 0 / 0 | 7 / 7 |
| 20 | J. Tymon | 90 | 0 / 0 | 0 | 46 | 1 / 1 | 0 / 2 | 0 / 0 | 0 | 0 / 0 | 0 / 0 | 0 / 0 | 7 / 6 |
| 25 | C. Brittain | 76 | 0 / 0 | 0 | 31 | 0 / 0 | 1 / 0 | 0 / 0 | 0 | 0 / 0 | 0 / 0 | 0 / 0 | 7 / 6 |
| 15 | E. Ward | 90 | 0 / 0 | 0 | 51 | 0 / 0 | 1 / 0 | 0 / 0 | 0 | 0 / 0 | 0 / 0 | 0 / 0 | 2 / 2 |
| 10 | C. Aneke | 90 | 0 / 0 | 0 | 27 | 4 / 0 | 5 / 1 | 0 / 0 | 0 | 0 / 0 | 0 / 0 | 0 / 0 | 0 / 0 |
| 8 | O. Cissé | 90 | 0 / 0 | 0 | 48 | 1 / 0 | 0 / 0 | 0 / 0 | 0 | 0 / 0 | 0 / 0 | 0 / 0 | 1 / 1 |
| 6 | E. Upson | 90 | 0 / 0 | 0 | 69 | 2 / 1 | 0 / 1 | 0 / 0 | 0 | 0 / 0 | 2 / 2 | 2 / 2 | 0 / 0 |
| 17 | M. Tavernier | 85 | 0 / 0 | 0 | 30 | 1 / 0 | 1 / 0 | 1 / 0 | 0 | 0 / 0 | 1 / 0 | 4 / 2 | 3 / 3 |
| 27 | I. Ugbo | 64 | 0 / 0 | 0 | 25 | 0 / 0 | 0 / 2 | 0 / 0 | 0 | 0 / 0 | 0 / 0 | 0 / 0 | 0 / 0 |
| 14 | K. Agard | 5 | 0 / 0 | 0 | 0 | 0 / 0 | 0 / 0 | 0 / 0 | 0 | 0 / 0 | 0 / 0 | 0 / 0 | 0 / 0 |
| 31 | B. Thomas-Asante | 14 | 0 / 0 | 0 | 2 | 0 / 0 | 0 / 1 | 0 / 0 | 0 | 0 / 0 | 0 / 0 | 0 / 0 | 0 / 0 |
| 16 | R. Muirhead | 26 | 0 / 0 | 0 | 7 | 0 / 0 | 2 / 1 | 0 / 0 | 0 | 0 / 0 | 0 / 0 | 1 / 1 | 0 / 0 |

| | | DUELS / WON | GROUND CHALL. / WON | AIR CHALL. / WON | ATTACKING CHALL. | DEFENDING CHALL. | DRIBBLES | TACKLES | DEFENDING 1V1 | RECOVERED IN OPP. HALF | LOSSES IN OPP. HALF |
|----|------------------|-------------|------------------------|---------------------|---------------------|---------------------|----------|---------|---------------|---------------------------|------------------------|
| 13 | W. Sietsma | 1 / 0 | 1 / 0 | 0 / 0 | 0 | 0 | 0 | 0 | 0 | 0 | 0 |
| 2 | G. Williams | 25 / 14 | 13 / 6 | 12 / 8 | 4 | 3 | 2 | 1 | 0 | 0 | 3 |
| 12 | S. Golbourne | 17 / 8 | 16 / 8 | 1 / 0 | 2 | 7 | 0 | 0 | 1 | 1 | 1 |
| 20 | J. Tymon | 33 / 14 | 20 / 10 | 13 / 4 | 5 | 10 | 2 | 1 | 5 | 4 | 4 |
| 25 | C. Brittain | 19 / 6 | 17 / 6 | 2 / 0 | 11 | 3 | 7 | 0 | 1 | 3 | 4 |
| 15 | E. Ward | 33 / 20 | 17 / 11 | 16 / 9 | 0 | 9 | 0 | 1 | 1 | 1 | 1 |
| 10 | C. Aneke | 44 / 13 | 31 / 6 | 13 / 7 | 19 | 3 | 3 | 0 | 0 | 2 | 7 |
| 8 | O. Cissé | 15 / 7 | 8 / 4 | 7 / 3 | 2 | 0 | 0 | 0 | 0 | 4 | 3 |
| 6 | E. Upson | 11 / 5 | 9 / 4 | 2 / 1 | 4 | 2 | 1 | 0 | 0 | 3 | 2 |
| 17 | M. Tavernier | 26 / 9 | 23 / 7 | 3 / 2 | 9 | 9 | 6 | 1 | 4 | 4 | 4 |
| 27 | I. Ugbo | 26 / 11 | 26 / 11 | 0 / 0 | 18 | 3 | 7 | 0 | 0 | 0 | 2 |
| 14 | K. Agard | 1 / 1 | 0 / 0 | 1 / 1 | 0 | 0 | 0 | 0 | 0 | 0 | 0 |
| 31 | B. Thomas-Asante | 7 / 2 | 6 / 2 | 1 / 0 | 3 | 1 | 1 | 0 | 0 | 0 | 1 |
| 16 | R. Muirhead | 10 / 3 | 9 / 3 | 1 / 0 | 4 | 2 | 3 | 0 | 0 | 0 | 0 |

| | | PASSES / ACCURATE | % ACCURATE | LONG PASSES / ACCURATE | THROUGH PASSES / ACCURATE | IN THE BOX / ACCURATE | CROSSES / ACCURATE | CROSS FROM BYLINE | CROSS HIGH | CROSS LOW | CROSS BLOCKED |
|----|------------------|----------------------|------------|---------------------------|---------------------------------|--------------------------|-----------------------|----------------------|------------|-----------|---------------|
| 13 | W. Sietsma | 16 / 13 | 82 | 7 / 5 | 0 / 0 | 0 / 0 | 0 / 0 | 0 | 0 | 0 | 0 |
| 2 | G. Williams | 37 / 27 | 73 | 10 / 6 | 0 / 0 | 1 / 0 | 1 / 0 | 1 | 0 | 1 | 0 |
| 12 | S. Golbourne | 63 / 45 | 72 | 9 / 3 | 0 / 0 | 0 / 0 | 3 / 1 | 0 | 3 | 0 | 0 |
| 20 | J. Tymon | 39 / 30 | 77 | 4 / 2 | 1 / 0 | 0 / 0 | 2 / 0 | 0 | 0 | 2 | 0 |
| 25 | C. Brittain | 21 / 10 | 48 | 0 / 0 | 0 / 0 | 1 / 0 | 9 / 0 | 3 | 5 | 2 | 2 |
| 15 | E. Ward | 44 / 27 | 62 | 14 / 8 | 0 / 0 | 0 / 0 | 0 / 0 | 0 | 0 | 0 | 0 |
| 10 | C. Aneke | 25 / 17 | 68 | 1 / 0 | 2 / 0 | 2 / 1 | 2 / 0 | 1 | 0 | 1 | 1 |
| 8 | O. Cissé | 43 / 34 | 80 | 3 / 1 | 0 / 0 | 0 / 0 | 1 / 1 | 0 | 1 | 0 | 0 |
| 6 | E. Upson | 63 / 51 | 81 | 13 / 5 | 0 / 0 | 1 / 1 | 2 / 0 | 1 | 1 | 0 | 1 |
| 17 | M. Tavernier | 28 / 18 | 65 | 1 / 0 | 0 / 0 | 2 / 0 | 4 / 0 | 2 | 1 | 1 | 2 |
| 27 | I. Ugbo | 20 / 16 | 80 | 2 / 0 | 1 / 0 | 1 / 1 | 1 / 1 | 0 | 0 | 1 | 0 |
| 14 | K. Agard | 0 / 0 | 0 | 0 / 0 | 0 / 0 | 0 / 0 | 0 / 0 | 0 | 0 | 0 | 0 |
| 31 | B. Thomas-Asante | 2 / 0 | 0 | 1 / 0 | 0 / 0 | 0 / 0 | 1 / 0 | 1 | 0 | 1 | 0 |
| 16 | R. Muirhead | 7 / 6 | 86 | 1 / 1 | 0 / 0 | 0 / 0 | 0 / 0 | 0 | 0 | 0 | 0 |

MATCH REPORT GUIDE

SECTION 1

AVERAGE POSITIONS

Players position is calculated on an average detected point which takes into consideration every kind of action, including those with no ball possession.
White-filled circles are substitutes indicators.

SECTION 2

GENERALS

Average position

It shows the barycentre of the team, considering the average place of its actions.

CONSTRUCTION

Actions started by goalkeeper

It considers all the actions started by the goalkeeper. It will be considered as a single one even if inside the same action he is involved more than once before the ball crosses the halfway line.

Long pass

Number of throws beyond the halfway line.

Low

Number of throws to a fellow teammate inside his half of the field.

Right

Number of actions crossing the halfway line in the right side.

Left

Number of actions crossing the halfway line in the left side.

Center

Number of actions crossing the halfway line in the central area.

Failed

Number of actions stopped before crossing the halfway line.

ATTACKING PLAY

Actions finalization

It shows team offensive dangerousness and the way it is carried out.

Shot from outside of penalty area

Number of team shots from outside the penalty area.

Crosses

It shows how many finalizations are completed straight after a cross from the flanks.

Build-Up play

It shows how many finalizations are completed straight after a build-up play.

Long ball

It shows how many finalizations are completed straight after a long ball.

DEFENSIVE

Final Third Entries

Number of times the opponent team plays the ball between the halfway line and the penalty area.

Fouls near the box

Number of fouls committed by the team nearby its penalty areas

SECTION 3

TERRITORIAL COVERAGE

Ball possession recovery

It only takes into consideration the actual number of ball possession recoveries, even if temporary. Recoveries caused by opponents mistakes are not considered (i.e. ball kicked out of the pitch by the opponent).

SECTION 4

DUELS

Attacking duels

Number of duels carried out when the team has ball possession.

Defensive duels

Number of duels carried out when the opponent team has ball possession.

SECTION 7

PASSES

Players position is calculated on an average detected point based on the position occupied, considering every kind of action, including those with no ball possession.

Lines connecting players show the number of passes. The thicker is the line, the higher is the number of passes between each other.