



ROCHDALE

Coach : Hill Keith

21/04/2018  
LEAGUE ONE 2017/2018

1 - 1



BRADFORD CITY

Coach : Grayson Simon



Yates Oliver



Crown Oil Arena



97' (46 + 51)

1	GKP	J. Lillis ('87)	74'		1	GKP	C. Doyle ('85)	
4	DEF	J. McNulty ('85)			29	DEF	A. McMahon ('86)	
2	DEF	J. Rafferty ('93)	89'		15	DEF	S. Warnock ('81)	
6	DEF	H. McGahey ('95)	96'		5	DEF	M. Kilgallon ('84)	
21	DEF	R. Delaney ('96)			22	DEF	N. Knight-Percival ('87)	
16	MID	M. Done ('88)		41'	8	DEF	T. Dieng ('92)	
15	MID	J. Thompson ('89)	74'		6	MID	R. Vincelot ('85)	77'
17	MID	B. Inman ('91)	85'		30	MID	M. Lund ('90)	89'
10	MID	C. Camps ('95)			17	MID	A. Gilliead ('96)	
14	MID	O. Rathbone ('96)	51'	22'	9	FWD	C. Wyke ('92)	91'
9	FWD	C. Andrew ('86)			21	FWD	K. Brünker ('94)	54'

## SUBSTITUTES

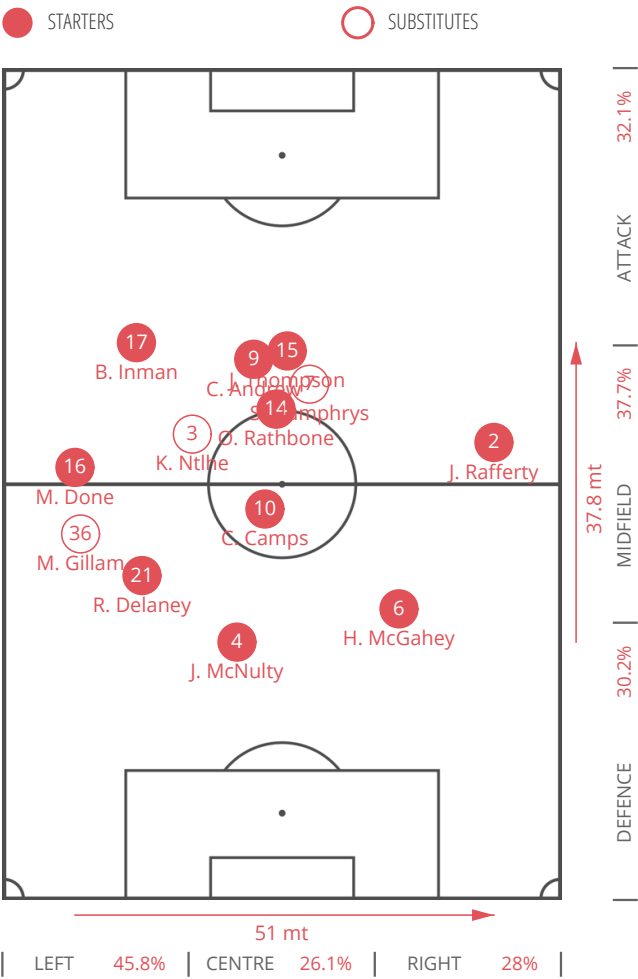
3	DEF	K. Ntlhe ('94)	51'		7	MID	N. Law ('88)	54'			
7	FWD	S. Humphrys ('97)	74'		88'		14	FWD	S. McCartan ('94)	89'	
36	FWD	M. Gillam ('98)	85'		11	FWD	D. Poleon ('93)	77'			

## BACKUPS

22	GKP	B. Moore ('92)	23	GKP	L. Raeder ('93)
12	DEF	S. Wiseman ('85)	3	DEF	A. Chicksen ('90)
33	MID	M. Dobre ('98)	24	MID	D. Devine ('97)
28	MID	A. Morley (')	34	FWD	O. Patrick ('96)

ROCHDALE

AVERAGE POSITIONS



PLAYERS

2	DEF	J. Rafferty
4	DEF	J. McNulty
21	DEF	R. Delaney
6	DEF	H. McGahey
10	MID	C. Camps
16	MID	M. Done
17	MID	B. Inman
14	MID	O. Rathbone
15	MID	J. Thompson
9	FWD	C. Andrew
3	DEF	K. Ntlhe
36	FWD	M. Gillam
7	FWD	S. Humphrys



3-4-2-1  
Used from 0' >> 52'



3-4-2-1  
Used from 52' >> 73'

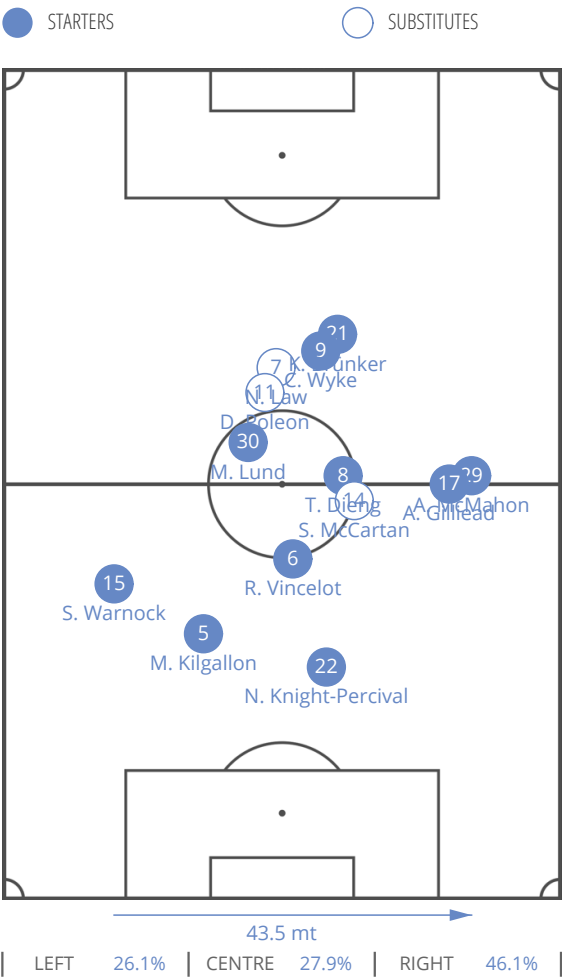


3-4-2-1  
Used from 73' >> 85'



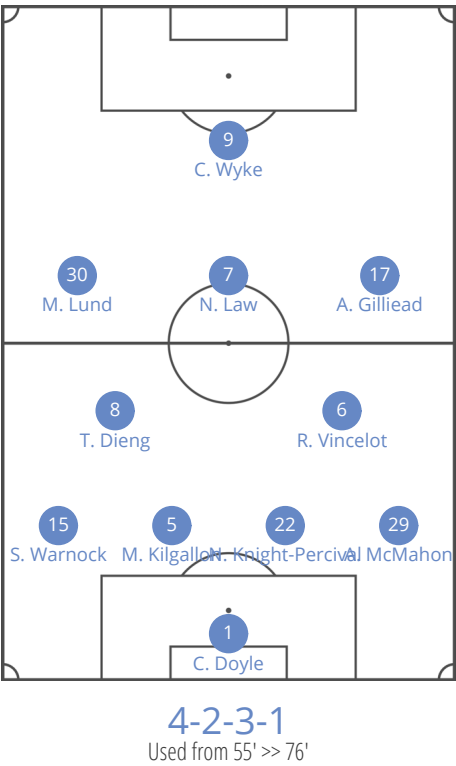
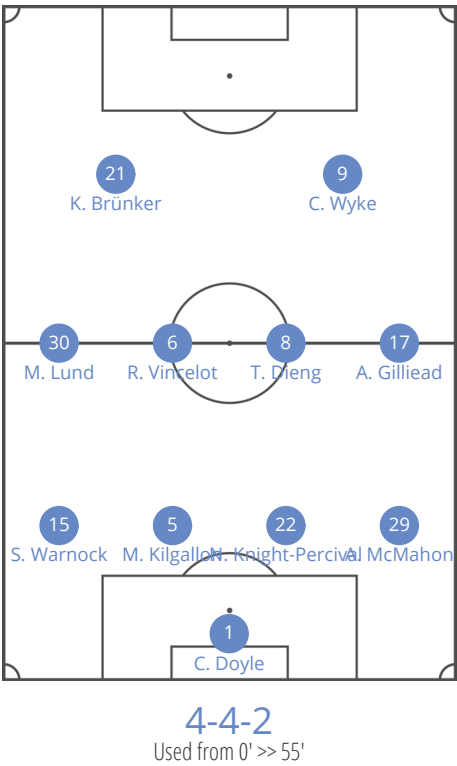
BRADFORD CITY

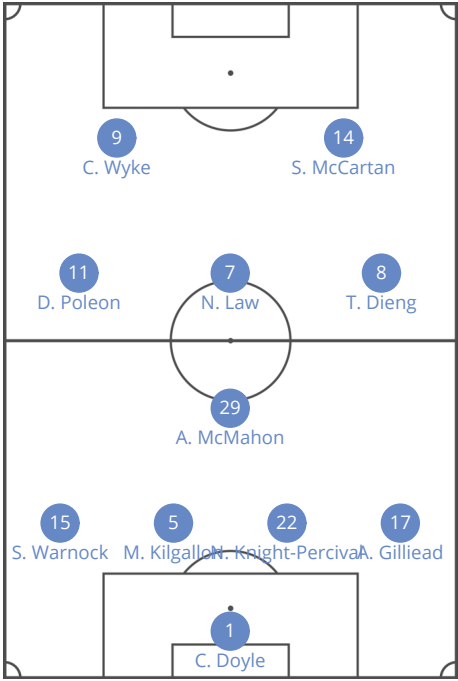
AVERAGE POSITIONS



PLAYERS

22	DEF	N. Knight-Percival
5	DEF	M. Kilgallon
15	DEF	S. Warnock
29	DEF	A. McMahon
8	DEF	T. Dieng
6	MID	R. Vincelot
17	MID	A. Gilliead
30	MID	M. Lund
21	FWD	K. Brünker
9	FWD	C. Wyke
7	MID	N. Law
11	FWD	D. Poleon
14	FWD	S. McCartan





4-1-3-2

Used from 90' >> 97'



ROCHDALE



BRADFORD CITY

1 HALF

2 HALF

TOTAL

1 HALF

2 HALF



TOTAL

GENERALS

BALL POSSESSION	14 min	12 min	26 min	13 min	19 min	32 min
AVERAGE POSITION	54.4 mt	50.8 mt	52.6 mt	51.2 mt	53.3 mt	52.25 mt
CORNERS	3	2	5	3	1	4
FREE KICK CROSS	1	2	3	0	4	4
FREE KICK SHOT	0	0	0	0	0	0
FOULS	7	7	14	4	6	10
OFFSIDES	0	3	3	1	0	1

CONSTRUCTION

PASSES (% ACCURATE)	181 (75.1%)	114 (67.5%)	295 (72.2%)	129 (65.9%)	197 (80.7%)	326 (74.8%)
- Final Third Entries (% Accurate)	51 (64.7%)	18 (55.6%)	69 (62.3%)	32 (68.8%)	41 (73.2%)	73 (71.2%)
- Other (% Accurate)	130 (79.2%)	96 (69.8%)	226 (75.2%)	97 (64.9%)	156 (82.7%)	253 (75.9%)
LONG PASSES (% ACCURATE)	29 (48.3%)	26 (50%)	55 (49.1%)	32 (53.1%)	30 (63.3%)	62 (58.1%)
THROUGH PASSES (% ACCURATE)	6 (33.3%)	5 (20%)	11 (27.3%)	5 (20%)	4 (25%)	9 (22.2%)
COUNTERATTACKS	1	3	4	0	0	0
ACTIONS STARTED BY GOALKEEPER	26	23	49	20	24	44
- Long pass	11	16	27	15	8	23
- LOW	15	7	22	5	16	21
-- % Right	33.3%	14.3%	27.3%	40%	31.3%	33.3%
-- % Left	26.7%	28.6%	27.3%	40%	37.5%	38.1%
-- % Center	40%	57.1%	45.5%	20%	25%	23.8%
-- % Failed	0%	0%	0%	0%	6.3%	4.8%

	<div><div></div><div>ROCHDALE</div></div>			<div><div></div><div>BRADFORD CITY</div></div>		
	1 HALF	2 HALF	TOTAL	1 HALF	2 HALF	TOTAL
ATTACKING PLAY						
OPPORTUNITY (% SUCCESSFUL)	4 (25%)	1 (0%)	5 (20%)	4 (0%)	4 (25%)	8 (12.5%)
SHOTS	6	2	8	4	4	8
Shot from outside of penalty area	2	0	2	1	0	1
Shot from inside of penalty area	4	2	6	3	4	7
ACTIONS FINALIZATION	15	5	20	8	7	15
- Shot from outside of penalty area	2	0	2	1	0	1
- CROSSES	4	2	6	1	4	5
-- From left (%)	1 (25%)	1 (50%)	2 (33.3%)	0	0	0 (0%)
-- From right (%)	3 (75%)	1 (50%)	4 (66.7%)	1 (100%)	4 (100%)	5 (100%)
- Build-Up play	7	2	9	3	2	5
- Long ball	2	1	3	3	1	4
DEFENSIVE						
SAVES	1	0	1	2	1	3
CLEARANCES	6	8	14	5	2	7
- Low	0	0	0	0	0	0
- High	6	8	14	5	2	7
BALL RECOVERY	47	52	99	73	54	127
- End action	21	26	47	24	16	40
- Real recovery	-9	-9	-18	20	17	37
- Temporary recovery	35	35	70	29	21	50
FINAL THIRD ENTRIES	42	42	84	41	37	78
FOULS NEAR THE BOX	0	0	0	0	1	1

TERRITORIAL COVERAGE



ROCHDALE



BRADFORD CITY

FIRST HALF

SECOND HALF

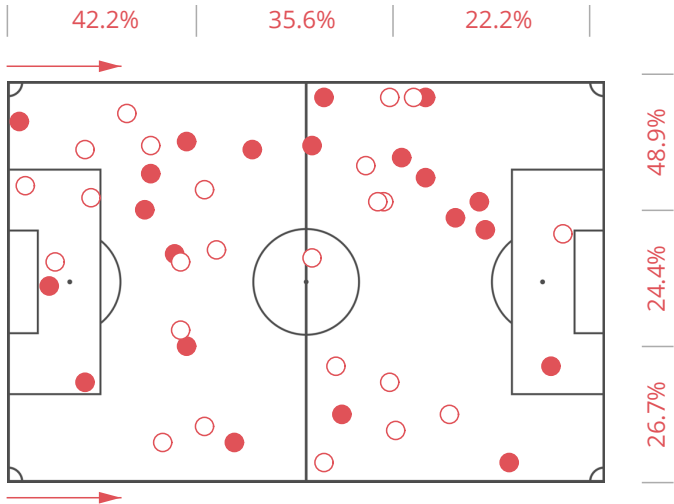
FIRST HALF

SECOND HALF

45

BALL POSSESSION RECOVERY

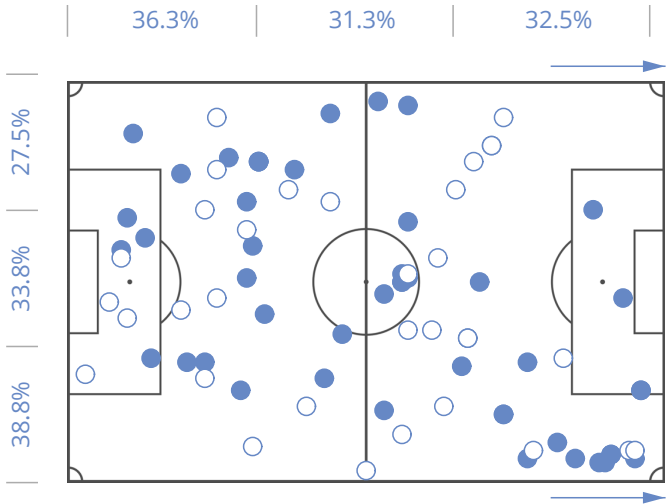
80



BEST PLAYERS

WORST PLAYERS

C. Camps (90')	10	C. Andrew (90')	1
M. Done (90')	7	J. Thompson (74')	1
J. McNulty (90')	7	S. Humphrys (16')	1
H. McGahey (90')	5	J. Rafferty (90')	2
R. Delaney (90')	3	B. Inman (85')	2



BEST PLAYERS

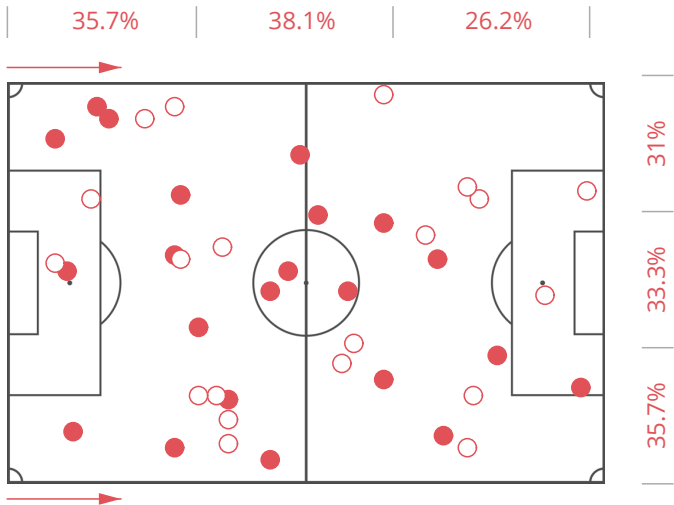
WORST PLAYERS

C. Wyke (90')	11	T. Dieng (90')	1
M. Kilgallon (90')	11	N. Law (36')	1
K. Brünker (54')	11	D. Poleon (13')	2
A. Gilliead (90')	10	S. Warnock (90')	4
A. McMahon (90')	9	R. Vincelot (77')	6

42

BALL POSSESSION LOSS

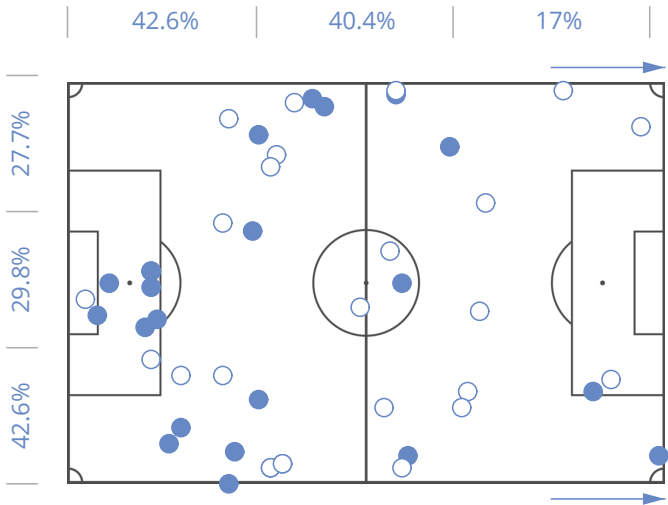
47



BEST PLAYERS

WORST PLAYERS

R. Delaney (90')	1	J. Rafferty (90')	8
O. Rathbone (51')	1	M. Done (90')	6
S. Humphrys (16')	1	C. Camps (90')	5
J. McNulty (90')	2	H. McGahey (90')	5
K. Ntlhe (39')	2	C. Andrew (90')	4



BEST PLAYERS

WORST PLAYERS

K. Brünker (54')	1	A. Gilliead (90')	12
N. Law (36')	1	M. Kilgallon (90')	7
S. McCartan (1')	1	A. McMahon (90')	6
N. Knight-Percival (90')	2	T. Dieng (90')	4
R. Vincelot (77')	2	C. Wyke (90')	4



TERRITORIAL COVERAGE



ROCHDALE



BRADFORD CITY

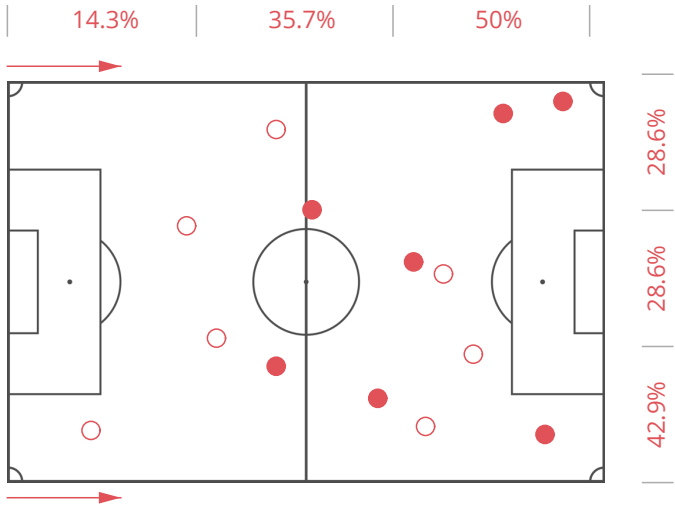
FIRST HALF

SECOND HALF

FIRST HALF

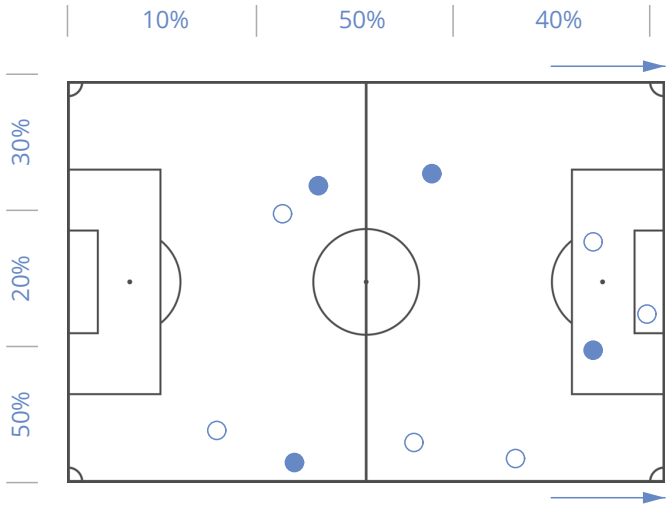
SECOND HALF

FOULS COMMITTED



WORST PLAYERS

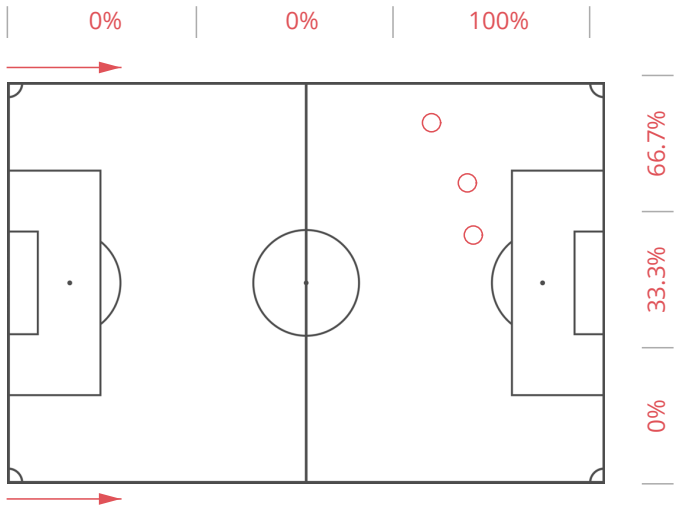
S. Humphrys (16')	3
C. Camps (90')	2
H. McGahey (90')	2
J. McNulty (90')	2
O. Rathbone (51')	2



WORST PLAYERS

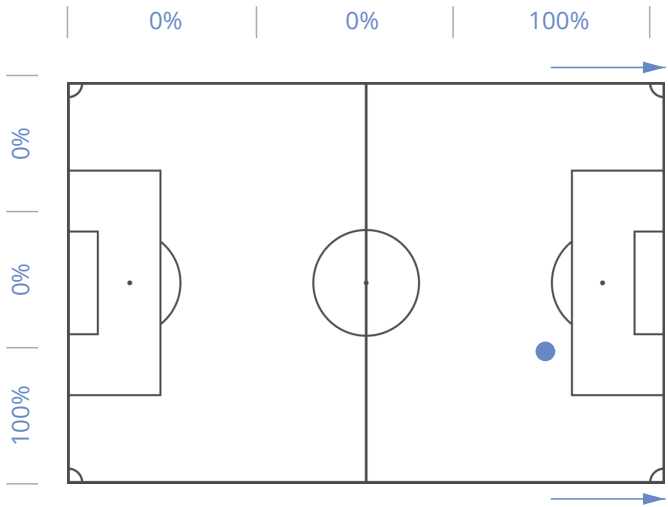
T. Dieng (90')	3
A. Gilliead (90')	2
N. Knight-Percival (90')	2
M. Lund (89')	2
A. McMahon (90')	1

OFFSIDES



WORST PLAYERS

C. Andrew (90')	1
B. Inman (85')	1
S. Humphrys (16')	1



WORST PLAYERS

K. Brünker (54')	1
------------------	---

TERRITORIAL COVERAGE



ROCHDALE

FIRST HALF

SECOND HALF

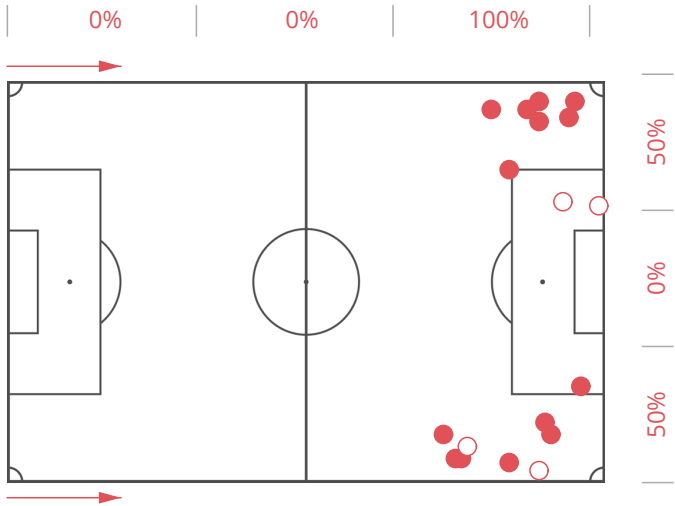


BRADFORD CITY

FIRST HALF

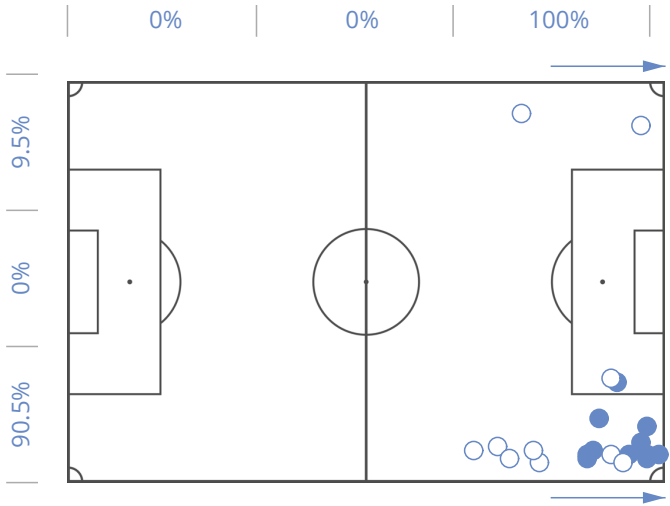
SECOND HALF

18 CROSSES 21



BEST PLAYERS

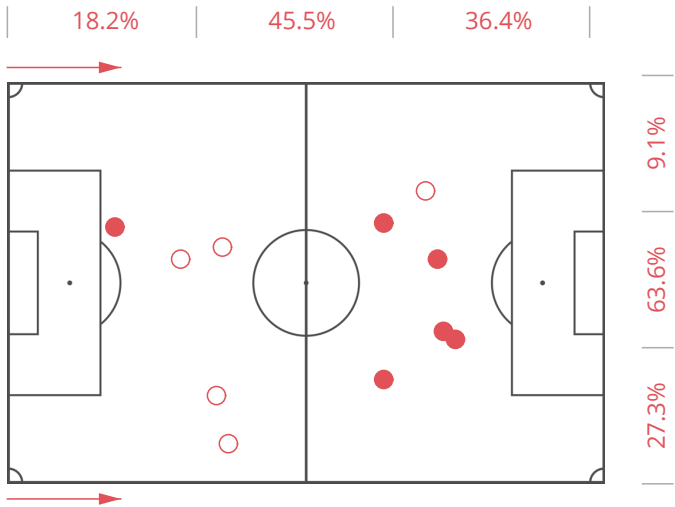
J. Rafferty (90')	8
M. Done (90')	5
B. Inman (85')	3
J. Thompson (74')	1
S. Humphrys (16')	1



BEST PLAYERS

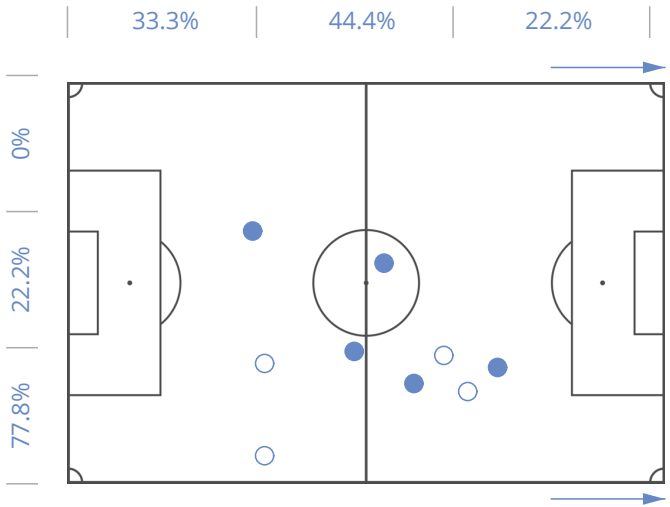
A. McMahon (90')	8
A. Gilliead (90')	7
K. Brünker (54')	3
T. Dieng (90')	1
C. Wyke (90')	1

11 THROUGH PASSES 9



BEST PLAYERS

C. Camps (90')	3
J. Rafferty (90')	2
B. Inman (85')	2
J. McNulty (90')	1
C. Andrew (90')	1



BEST PLAYERS

A. Gilliead (90')	4
A. McMahon (90')	1
S. Warnock (90')	1
N. Knight-Percival (90')	1
M. Kilgallon (90')	1



ROCHDALE



BRADFORD CITY

● FIRST HALF

○ SECOND HALF

● WON

● NEUT.

● LOST

● WON

● NEUT.

● LOST

● WON

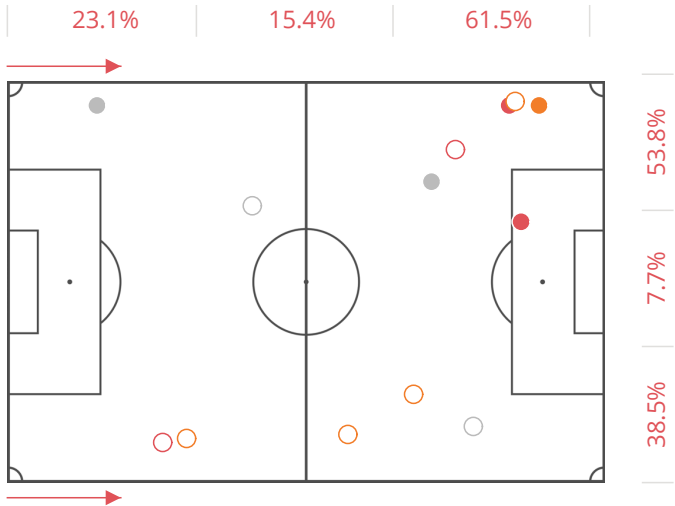
● NEUT.

● LOST

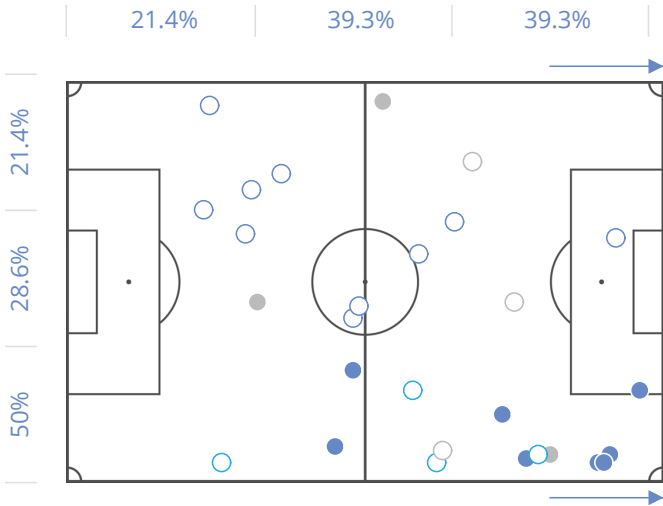
13

1 VS 1 DRIBBLING

28



BEST PLAYERS	DUELS	WON	NEUT.	LOST
C. Camps (90')	3	1	1	1
B. Inman (85')	3	1	0	2
J. Rafferty (90')	2	0	2	0
M. Done (90')	2	1	1	0
C. Andrew (90')	2	1	1	0

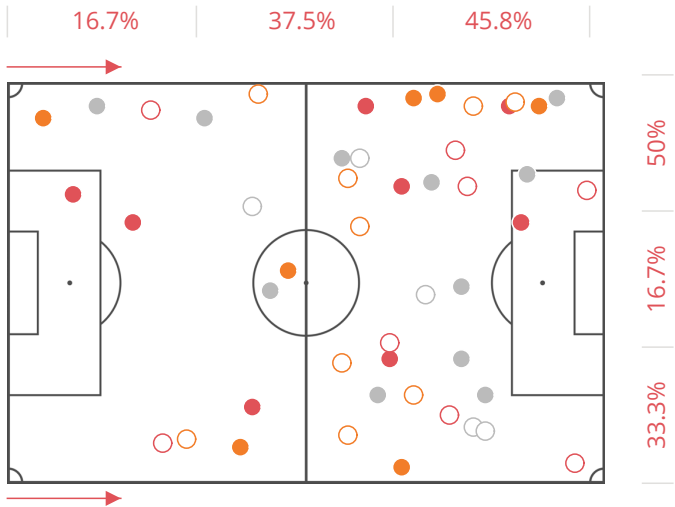


BEST PLAYERS	DUELS	WON	NEUT.	LOST
A. Gilliead (90')	9	6	2	1
A. McMahon (90')	3	2	1	0
S. Warnock (90')	3	2	0	1
N. Law (36')	3	1	1	1
M. Kilgallon (90')	2	2	0	0

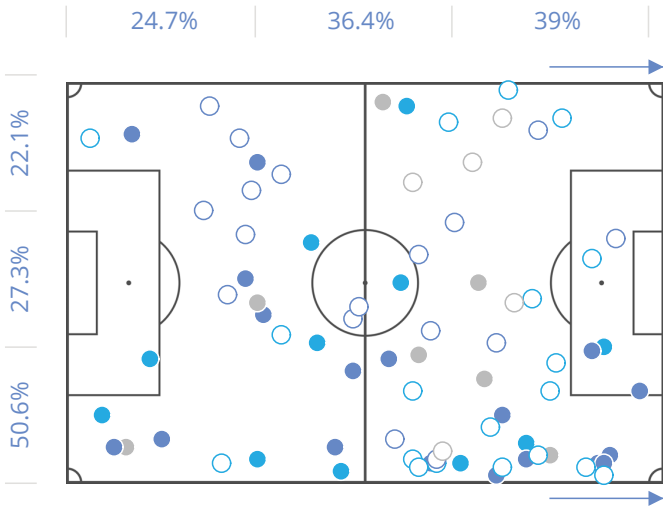
48

ATTACKING DUELS


77



BEST PLAYERS	DUELS	WON	NEUT.	LOST
C. Camps (90')	10	4	3	3
M. Done (90')	8	3	2	3
B. Inman (85')	7	3	1	3
O. Rathbone (51')	5	2	1	2
J. Rafferty (90')	4	0	3	1



BEST PLAYERS	DUELS	WON	NEUT.	LOST
C. Wyke (90')	20	4	12	4
A. Gilliead (90')	16	8	6	2
K. Brünker (54')	10	5	4	1
A. McMahon (90')	5	4	1	0
N. Law (36')	5	1	3	1




ROCHDALE

DUELS

● FIRST HALF

○ SECOND HALF



BRADFORD CITY

WON

NEUT.

LOST

WON

NEUT.

LOST

77

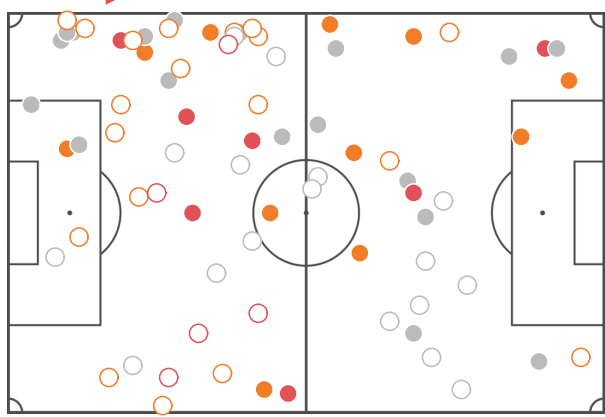
DEFENSIVE DUELS

48

39%

36.4%

24.7%



50.6%

27.3%

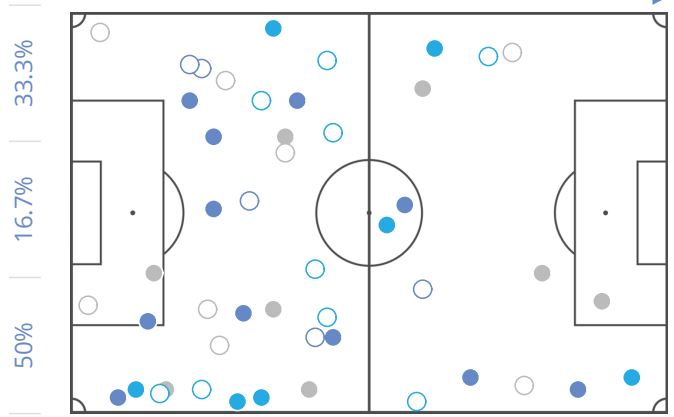
22.1%

BEST PLAYERS	DUELS	WON	NEUT.	LOST
R. Delaney (90')	14	2	7	5
M. Done (90')	13	3	3	7
C. Camps (90')	12	2	5	5
H. McGahey (90')	8	2	3	3
J. McNulty (90')	6	1	3	2

45.8%

37.5%

16.7%



33.3%

16.7%

50%

BEST PLAYERS	DUELS	WON	NEUT.	LOST
A. McMahon (90')	8	2	2	4
M. Lund (89')	8	4	2	2
A. Gilliead (90')	7	2	2	3
R. Vincelot (77')	7	2	2	3
T. Dieng (90')	6	2	1	3

100

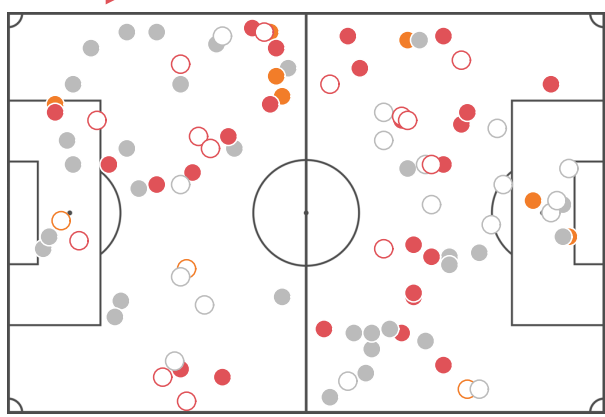
AERIAL DUELS

100

32%

33%

35.1%



39.2%

36.1%

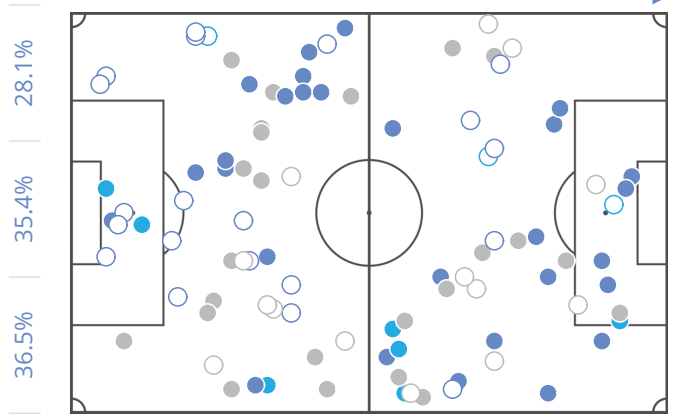
24.7%

BEST PLAYERS	DUELS	WON	NEUT.	LOST
C. Andrew (90')	28	15	2	11
R. Delaney (90')	16	7	1	8
M. Done (90')	11	4	3	4
J. McNulty (90')	9	3	2	4
J. Rafferty (90')	8	4	0	4

37.5%

32.3%

30.2%



28.1%

35.4%

36.5%

BEST PLAYERS	DUELS	WON	NEUT.	LOST
A. Gilliead (90')	15	5	5	5
C. Wyke (90')	14	8	1	5
T. Dieng (90')	10	4	0	6
S. Warnock (90')	10	4	4	2
N. Knight-Percival (90')	10	4	0	6

SECTION 4

12

DUELS GRID

BRADFORD CITY

ROCHDALE

	1. C. Doyle	22. N. Knight-Percival	5. M. Kilgallon	15. S. Warnock	29. A. McMahon	8. T. Dieng	6. R. Vincelot	17. A. Gilliead	30. M. Lund	21. K. Brünker	9. C. Wyke	7. N. Law	11. D. Poleon	14. S. McCartan
1. J. Lillis														
2. J. Rafferty			1	4			1		6	3	3			
4. J. McNulty			2	1						4	9		2	1
21. R. Delaney	1		2	1		1	1	4		11	13	2	1	
6. H. McGahey		1					1			1	8	1	2	
10. C. Camps			2		4		1	5	6	3	8	2		1
16. M. Done					3	5	1	19		3	1		2	1
17. B. Inman		3			7	5	2	4	1		1			
14. O. Rathbone						4	6	2	2					
15. J. Thompson		2	3	4	1	1	3				1			
9. C. Andrew		17	7	3	4	4	2	5	2					
3. K. Ntlhe						2	2	1			1	1		
36. M. Gillam													1	
7. S. Humphrys		3	1	4	3	1		1	1			1		

△ AIR CHALL.

□ GROUND CHALL.

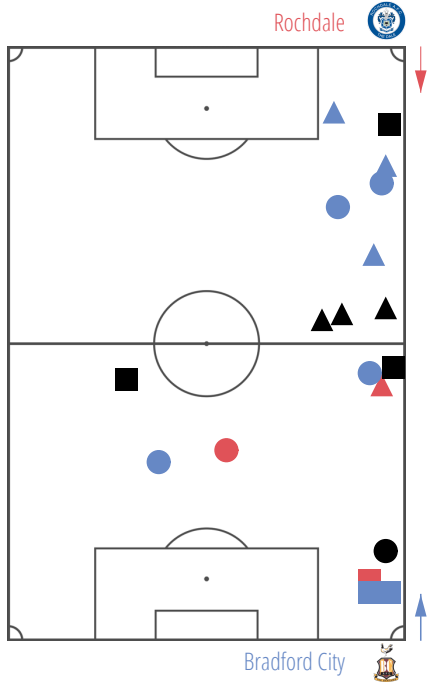
○ DRIBBLES

● WON BY ROCHDALE

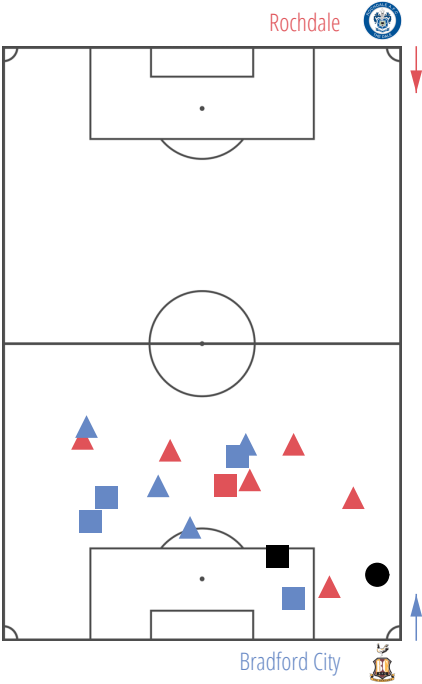
● WON BY BRADFORD CITY

● NEUTRAL DUELS

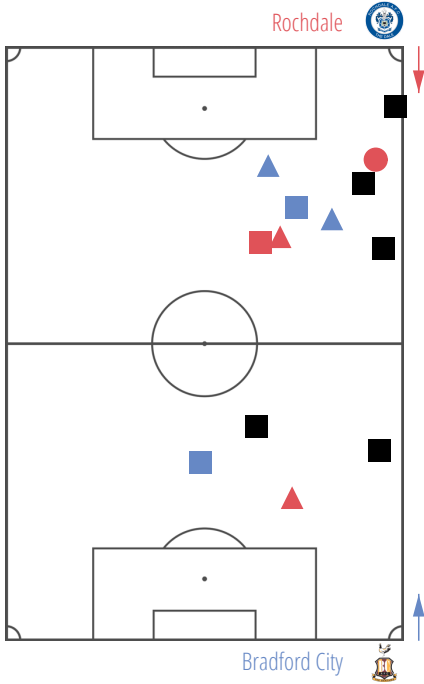
19 M. Done  
A. Gilliead




17 C. Andrew  
N. Knight-Percival




13 R. Delaney  
C. Wyke




DUELS GRID

 WON BY ROCDALE

 AIR CHALL.

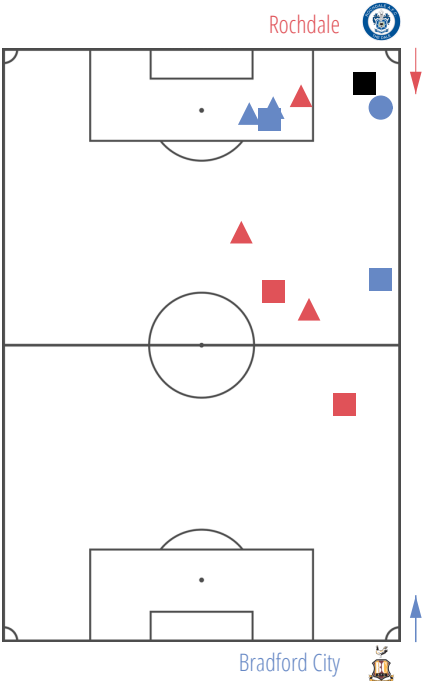
 GROUND CHALL.

 WON BY BRADFORD CITY

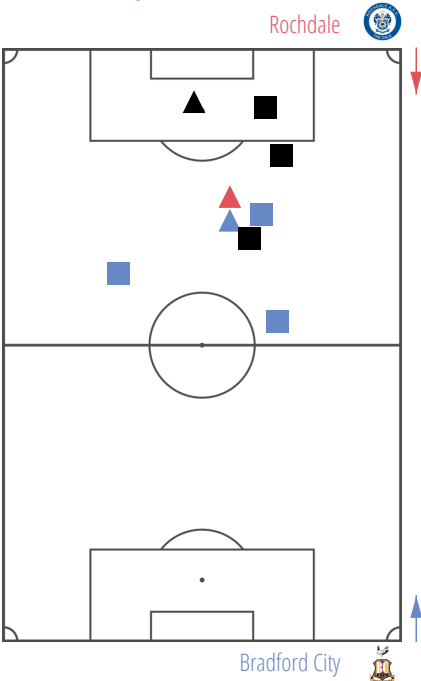
 DRIBBLES

 NEUTRAL DUELS

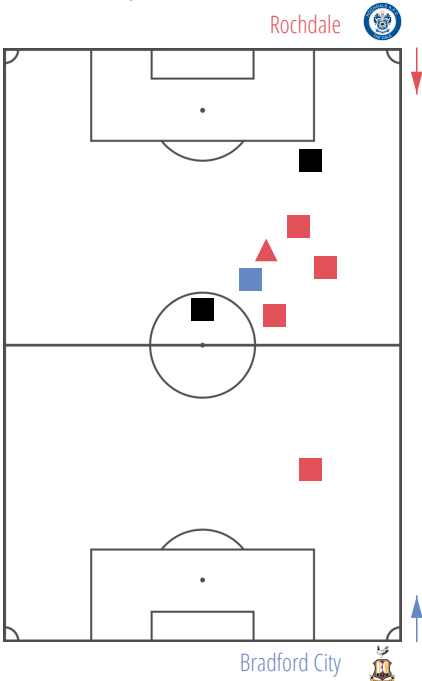
11 R. Delaney  
K. Brünker



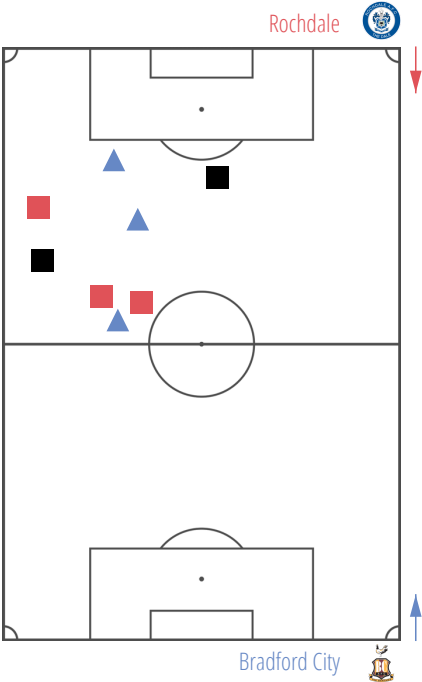
9 J. McNulty  
C. Wyke



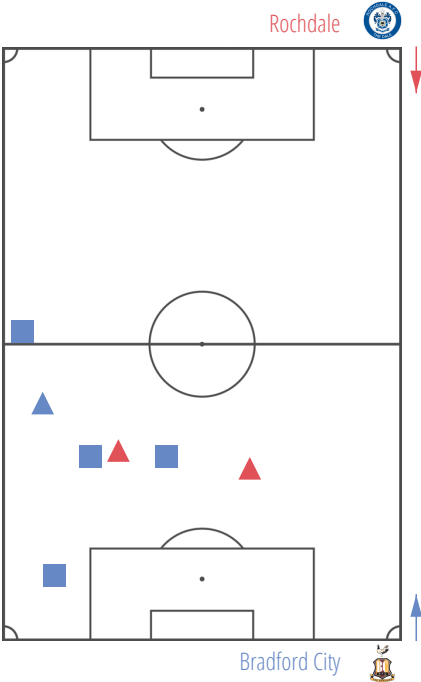
8 C. Camps  
C. Wyke



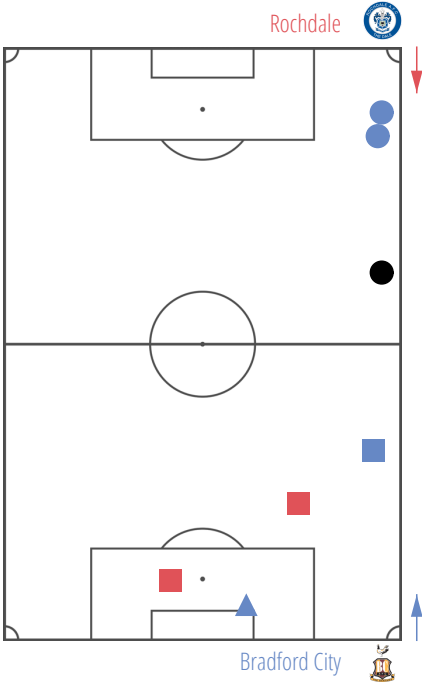
8 H. McGahey  
C. Wyke



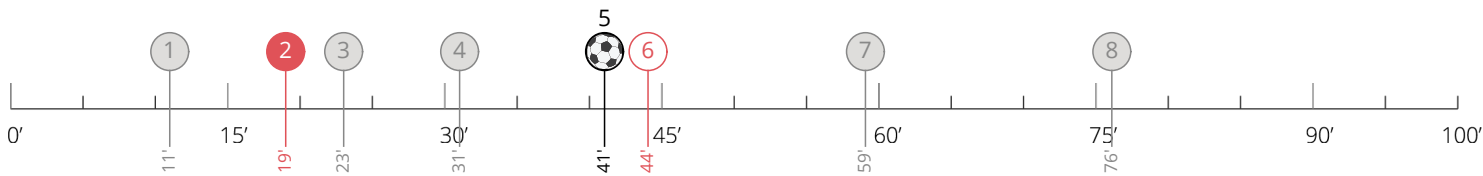
7 C. Andrew  
M. Kilgallon



7 B. Inman  
A. McMahon



ROCHDALE: GOALS AND STRIKES

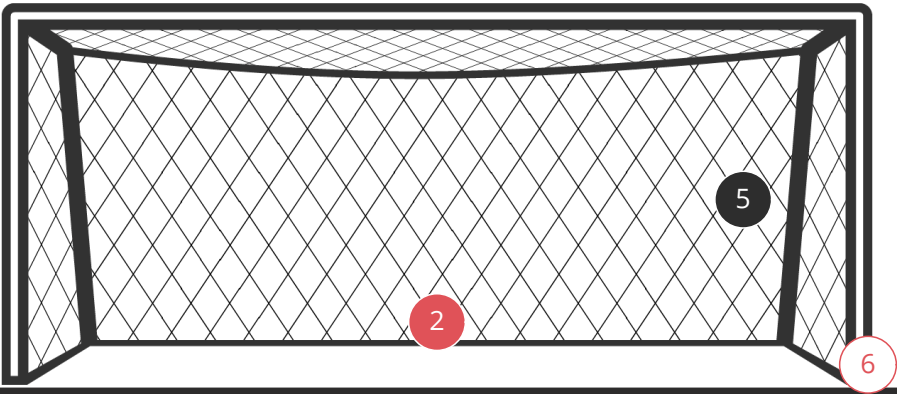


8  
SHOTS

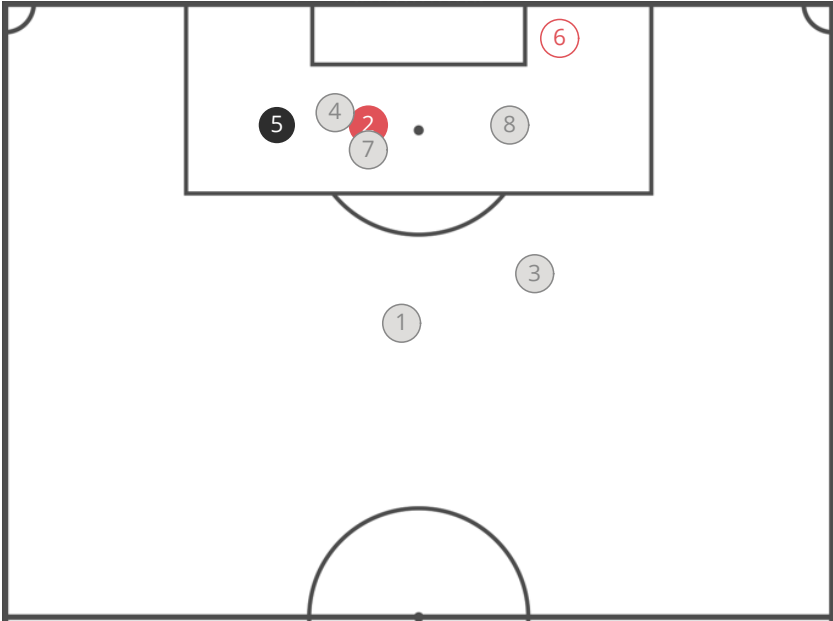
2  
ON TARGET

5  
BLOCKED

1  
GOALS

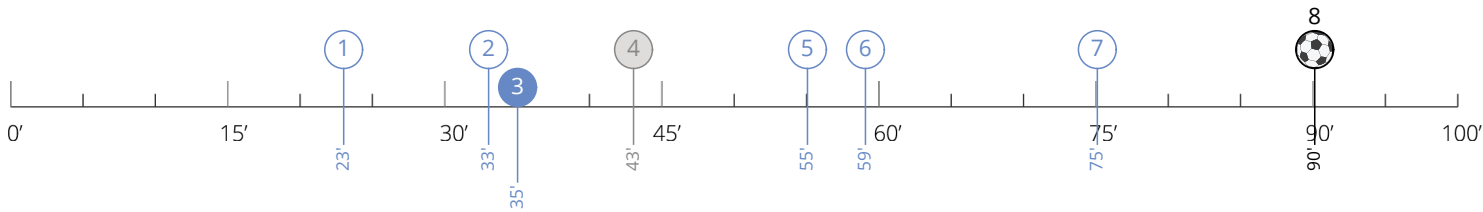


● ON TARGET      ○ OUT OF TARGET      ● BLOCKED      ● GOAL

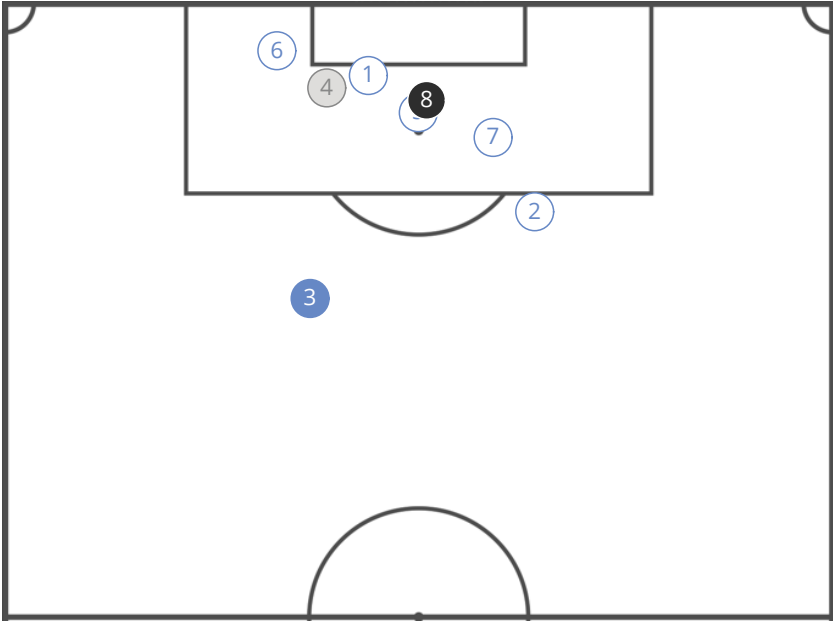
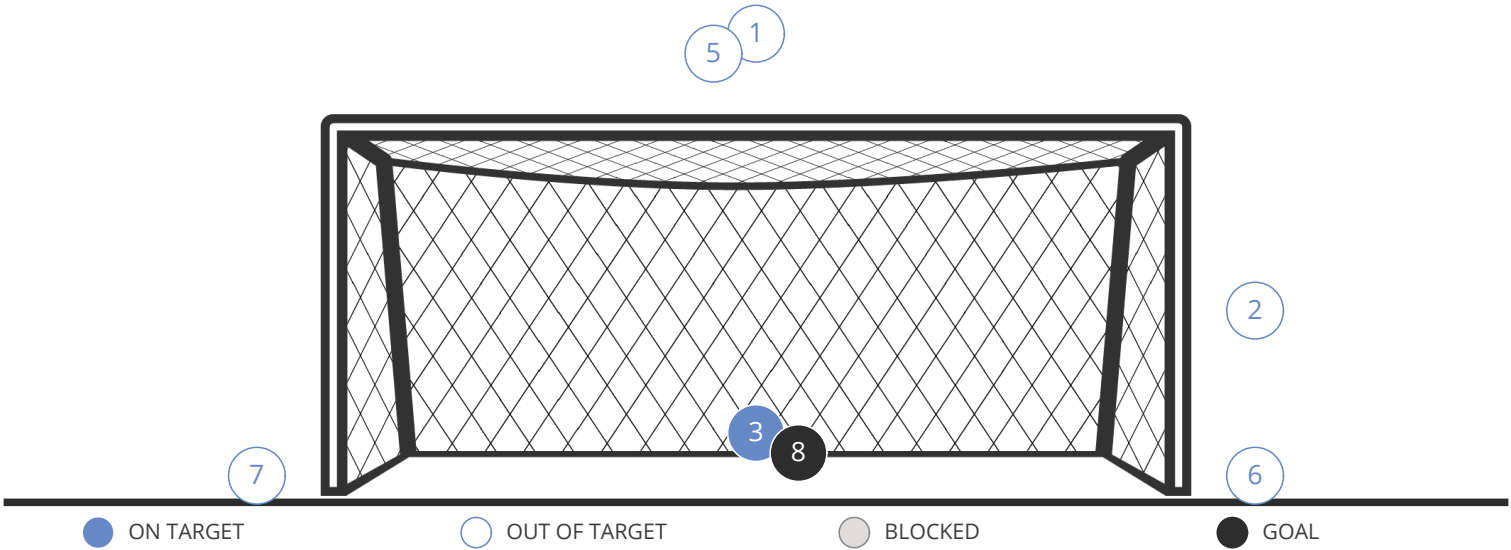


PLAYERS		FOOT
1	C. Andrew	Left
2	J. Thompson	Right
3	O. Rathbone	Right
4	M. Done	Right
5	M. Done	Left
6	B. Inman	Right
7	J. Thompson	Left
8	C. Andrew	Left

BRADFORD CITY: GOALS AND STRIKES



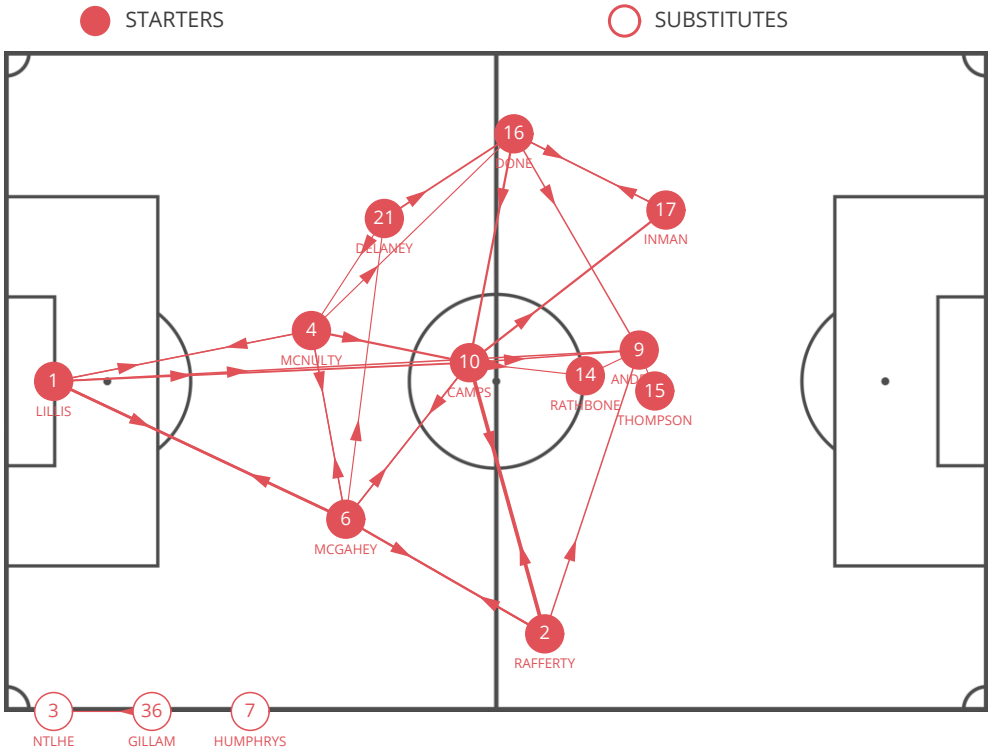
8	2	1	1
SHOTS	ON TARGET	BLOCKED	GOALS



PLAYERS		FOOT
1	M. Kilgallon	Heading
2	C. Wyke	Heading
3	M. Lund	Left
4	M. Lund	Right
5	C. Wyke	Left
6	N. Law	Left
7	T. Dieng	Heading
8	C. Wyke	Right



ROCHDALE: PASSES



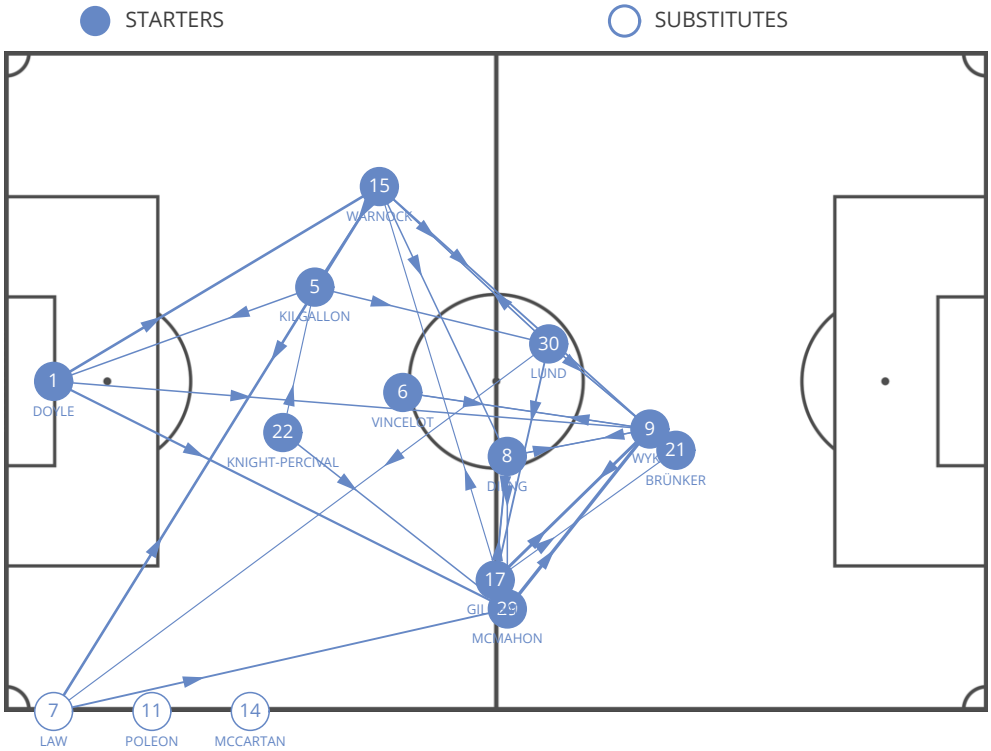
	1. J. Lillis	2. J. Rafferty	4. J. McNulty	21. R. Delaney	6. H. McGahey	10. C. Camps	16. M. Done	17. B. Inman	14. O. Rathbone	15. J. Thompson	9. C. Andrew	3. K. Ntlhe	36. M. Gillam	7. S. Humphrys
1. J. Lillis			3	1	7	5	2	1 (1)		2 (2)	4 (4)	1		
2. J. Rafferty	2				5	3				1	4 (3)			1 (1)
4. J. McNulty	4	2 (1)		2	3	6	3	2	1 (1)		2 (1)		2	1 (1)
21. R. Delaney	1		3		1	1	5	2 (2)		1	2 (2)		1	
6. H. McGahey	7	6 (1)	4	3		4	1 (1)	2 (1)			2 (2)			2 (1)
10. C. Camps	2	10 (1)		2	4		2	6	3		4 (1)			
16. M. Done		1	1	1	1	6		4	1	1	4 (1)			
17. B. Inman		1	2	1			4			1		2		
14. O. Rathbone		2			1		1	1			3 (1)			
15. J. Thompson		2		2		1	1	1	1					
9. C. Andrew					1	1		1	1	3				1
3. K. Ntlhe						1	1	1			2		1	
36. M. Gillam							1				1	3		1
7. S. Humphrys														

PASSES RECEIVED BY THE PLAYER

(\*) HIGH PASSES

PASSES MADE BY THE PLAYER

BRADFORD CITY: PASSES



	1. C. Doyle	22. N. Knight-Percival	5. M. Kilgallon	15. S. Warnock	29. A. McMahon	8. T. Dieng	6. R. Vincelot	17. A. Gilliead	30. M. Lund	21. K. Brunker	9. C. Wyke	7. N. Law	11. D. Poleon	14. S. McCartan
1. C. Doyle		1	1	7	6 (1)			1 (1)	1 (1)	1 (1)	4 (4)			
22. N. Knight-Percival	1		3	2	4			1	1	1	1 (1)	1		
5. M. Kilgallon	4			1	1		1	2	4 (2)	1	2 (2)	1		
15. S. Warnock		2	4		1	4	2	2	4 (1)	1 (1)	5 (3)	3	1 (1)	
29. A. McMahon	2		1	3		2 (1)	2	7	2		9 (3)	2	2 (2)	
8. T. Dieng		1		2	4 (2)		1	3		2 (1)	4	2	1	1
6. R. Vincelot		1	1	2	2			1	1	2 (1)	4			
17. A. Gilliead			1		6	5			2	3	8 (3)	2		
30. M. Lund		1	1	3	1	1	1	5 (1)		1 (1)	3	3	1 (1)	
21. K. Brunker					1		2		4		1			
9. C. Wyke			1	1	1	3	3	3	2	1		1		1
7. N. Law			1	7	5	1		2	1		1			
11. D. Poleon				1		1								
14. S. McCartan														

PASSES RECEIVED BY THE PLAYER

(\*) HIGH PASSES

PASSES MADE BY THE PLAYER

## ROCHDALE: PLAYER EVENTS

		MINUTES PLAYED	GOALS /GOALS ON PENALTY	ASSISTS	TOUCHES	SHOTS /ON TARGET	FOULS COMM. / CONCEDED	YELLOW CARDS / RED CARDS	OFFSIDES	FREE K. SHOTS / ON TARGET	FREE K. CROSS / ACCURATE	CORNERS / ACCURATE	THROW INS / ACCURATE
1	J. Lillis	90	0 / 0	0	31	0 / 0	0 / 0	1 / 0	0	0 / 0	0 / 0	0 / 0	0 / 0
2	J. Rafferty	90	0 / 0	0	31	0 / 0	0 / 1	1 / 0	0	0 / 0	0 / 0	0 / 0	13 / 11
4	J. McNulty	90	0 / 0	0	44	0 / 0	2 / 0	0 / 0	0	0 / 0	0 / 0	0 / 0	0 / 0
21	R. Delaney	90	0 / 0	0	29	0 / 0	0 / 0	0 / 0	0	0 / 0	0 / 0	0 / 0	0 / 0
6	H. McGahey	90	0 / 0	0	51	0 / 0	2 / 1	1 / 0	0	0 / 0	1 / 0	0 / 0	0 / 0
10	C. Camps	90	0 / 0	0	48	0 / 0	2 / 2	0 / 0	0	0 / 0	2 / 1	0 / 0	0 / 0
16	M. Done	90	1 / 0	0	39	2 / 1	1 / 1	0 / 0	0	0 / 0	0 / 0	0 / 0	20 / 13
17	B. Inman	85	0 / 0	0	20	1 / 0	0 / 0	0 / 0	1	0 / 0	0 / 0	5 / 3	0 / 0
14	O. Rathbone	51	0 / 0	0	12	1 / 0	2 / 2	1 / 0	0	0 / 0	0 / 0	0 / 0	0 / 0
15	J. Thompson	74	0 / 0	0	13	2 / 1	1 / 0	0 / 0	0	0 / 0	0 / 0	0 / 0	0 / 0
9	C. Andrew	90	0 / 0	0	22	2 / 0	1 / 1	0 / 0	1	0 / 0	0 / 0	0 / 0	0 / 0
3	K. Ntlhe	39	0 / 0	0	10	0 / 0	0 / 1	0 / 0	0	0 / 0	0 / 0	0 / 0	0 / 0
36	M. Gillam	5	0 / 0	0	6	0 / 0	0 / 0	0 / 0	0	0 / 0	0 / 0	0 / 0	0 / 0
7	S. Humphrys	16	0 / 0	0	3	0 / 0	3 / 1	1 / 0	1	0 / 0	0 / 0	0 / 0	0 / 0

		DUELS / WON	GROUND CHALL. / WON	AIR CHALL. / WON	ATTACKING CHALL.	DEFENDING CHALL.	DRIBBLES	TACKLES	DEFENDING 1V1	RECOVERED IN OPP. HALF	LOSSES IN OPP. HALF
1	J. Lillis	0 / 0	0 / 0	0 / 0	0	0	0	0	0	0	0
2	J. Rafferty	18 / 5	10 / 1	8 / 4	4	4	2	0	2	2	3
4	J. McNulty	19 / 5	10 / 2	9 / 3	0	6	0	1	1	1	0
21	R. Delaney	38 / 12	22 / 5	16 / 7	1	14	0	0	3	0	0
6	H. McGahey	14 / 5	11 / 5	3 / 0	0	8	0	0	2	1	0
10	C. Camps	32 / 11	28 / 9	4 / 2	10	12	3	0	5	6	1
16	M. Done	35 / 10	24 / 6	11 / 4	8	13	2	0	7	3	3
17	B. Inman	23 / 4	18 / 4	5 / 0	7	6	3	0	4	2	3
14	O. Rathbone	14 / 3	10 / 2	4 / 1	5	2	0	0	0	3	1
15	J. Thompson	15 / 3	10 / 2	5 / 1	3	3	0	0	2	1	3
9	C. Andrew	46 / 20	18 / 5	28 / 15	3	2	2	1	0	1	3
3	K. Ntlhe	7 / 5	6 / 4	1 / 1	3	1	1	0	1	2	0
36	M. Gillam	1 / 0	1 / 0	0 / 0	0	1	0	0	0	0	0
7	S. Humphrys	15 / 2	12 / 1	3 / 1	4	5	0	0	1	1	1

		PASSES / ACCURATE	% ACCURATE	LONG PASSES / ACCURATE	THROUGH PASSES / ACCURATE	IN THE BOX / ACCURATE	CROSSES / ACCURATE	CROSS FROM BYLINE	CROSS HIGH	CROSS LOW	CROSS BLOCKED
1	J. Lillis	30 / 26	87	11 / 7	0 / 0	0 / 0	0 / 0	0	0	0	0
2	J. Rafferty	27 / 15	56	6 / 3	2 / 0	1 / 0	8 / 1	2	6	2	0
4	J. McNulty	33 / 27	82	7 / 4	1 / 1	0 / 0	0 / 0	0	0	0	0
21	R. Delaney	21 / 16	77	6 / 3	0 / 0	0 / 0	0 / 0	0	0	0	0
6	H. McGahey	43 / 31	73	13 / 6	0 / 0	0 / 0	0 / 0	0	0	0	0
10	C. Camps	44 / 32	73	4 / 2	3 / 1	0 / 0	0 / 0	0	0	0	0
16	M. Done	31 / 20	65	4 / 1	0 / 0	2 / 1	5 / 1	2	2	0	3
17	B. Inman	16 / 11	69	2 / 0	2 / 0	1 / 1	3 / 1	1	3	0	0
14	O. Rathbone	9 / 8	89	1 / 1	1 / 0	0 / 0	0 / 0	0	0	0	0
15	J. Thompson	10 / 8	80	0 / 0	1 / 1	1 / 0	1 / 1	0	1	0	0
9	C. Andrew	15 / 8	54	0 / 0	1 / 0	2 / 0	0 / 0	0	0	0	0
3	K. Ntlhe	9 / 5	56	1 / 0	0 / 0	0 / 0	0 / 0	0	0	0	0
36	M. Gillam	6 / 6	100	0 / 0	0 / 0	0 / 0	0 / 0	0	0	0	0
7	S. Humphrys	1 / 0	0	0 / 0	0 / 0	1 / 0	1 / 0	1	0	1	0

## BRADFORD CITY: PLAYER EVENTS

		MINUTES PLAYED	GOALS /GOALS ON PENALTY	ASSISTS	TOUCHES	SHOTS /ON TARGET	FOULS COMM. /CONCEDED	YELLOW CARDS /RED CARDS	OFFSIDES	FREE K. SHOTS /ON TARGET	FREE K. CROSS /ACCURATE	CORNERS /ACCURATE	THROW INS /ACCURATE
1	C. Doyle	90	0 / 0	0	28	0 / 0	0 / 0	0 / 0	0	0 / 0	0 / 0	0 / 0	0 / 0
22	N. Knight-Percival	90	0 / 0	0	32	0 / 0	2 / 0	0 / 0	0	0 / 0	0 / 0	0 / 0	0 / 0
5	M. Kilgallon	90	0 / 0	0	31	1 / 0	0 / 2	0 / 0	0	0 / 0	0 / 0	0 / 0	0 / 0
15	S. Warnock	90	0 / 0	0	43	0 / 0	0 / 1	0 / 0	0	0 / 0	0 / 0	0 / 0	7 / 7
29	A. McMahon	90	0 / 0	0	52	0 / 0	1 / 2	0 / 0	0	0 / 0	4 / 2	4 / 0	23 / 22
8	T. Dieng	90	0 / 0	0	30	1 / 0	3 / 0	0 / 0	0	0 / 0	0 / 0	0 / 0	0 / 0
6	R. Vincelot	77	0 / 0	0	29	0 / 0	0 / 2	0 / 0	0	0 / 0	0 / 0	0 / 0	0 / 0
17	A. Gilliead	90	0 / 0	0	51	0 / 0	2 / 3	0 / 0	0	0 / 0	0 / 0	0 / 0	5 / 5
30	M. Lund	89	0 / 0	0	28	2 / 1	2 / 0	0 / 0	0	0 / 0	0 / 0	0 / 0	0 / 0
21	K. Brünker	54	0 / 0	0	16	0 / 0	0 / 0	0 / 0	1	0 / 0	0 / 0	0 / 0	0 / 0
9	C. Wyke	90	1 / 0	0	32	3 / 1	0 / 3	0 / 0	0	0 / 0	0 / 0	0 / 0	0 / 0
7	N. Law	36	0 / 0	0	20	1 / 0	0 / 0	0 / 0	0	0 / 0	0 / 0	0 / 0	0 / 0
11	D. Poleon	13	0 / 0	0	3	0 / 0	0 / 1	0 / 0	0	0 / 0	0 / 0	0 / 0	0 / 0
14	S. McCartan	1	0 / 0	0	1	0 / 0	0 / 0	0 / 0	0	0 / 0	0 / 0	0 / 0	0 / 0

		DUELS / WON	GROUND CHALL. / WON	AIR CHALL. / WON	ATTACKING CHALL.	DEFENDING CHALL.	DRIBBLES	TACKLES	DEFENDING 1V1	RECOVERED IN OPP. HALF	LOSSES IN OPP. HALF
1	C. Doyle	1 / 1	0 / 0	1 / 1	0	0	0	0	0	0	0
22	N. Knight-Percival	26 / 12	16 / 8	10 / 4	4	5	1	0	1	1	0
5	M. Kilgallon	18 / 14	9 / 7	9 / 7	3	1	2	0	1	1	1
15	S. Warnock	19 / 7	9 / 3	10 / 4	4	2	3	1	1	1	1
29	A. McMahon	22 / 11	17 / 8	5 / 3	5	8	3	0	4	6	0
8	T. Dieng	24 / 10	14 / 6	10 / 4	1	6	1	1	0	0	2
6	R. Vincelot	20 / 11	12 / 5	8 / 6	1	7	0	1	1	3	1
17	A. Gilliead	41 / 17	26 / 12	15 / 5	16	7	9	0	3	5	6
30	M. Lund	18 / 9	14 / 7	4 / 2	2	8	0	1	2	3	0
21	K. Brünker	25 / 9	16 / 6	9 / 3	10	3	2	0	0	11	0
9	C. Wyke	45 / 16	31 / 8	14 / 8	20	1	1	1	0	9	4
7	N. Law	7 / 2	7 / 2	0 / 0	5	0	3	0	0	1	1
11	D. Poleon	8 / 4	7 / 3	1 / 1	5	0	2	0	0	2	0
14	S. McCartan	3 / 2	2 / 1	1 / 1	1	0	1	0	0	0	1

		PASSES / ACCURATE	% ACCURATE	LONG PASSES / ACCURATE	THROUGH PASSES / ACCURATE	IN THE BOX / ACCURATE	CROSSES / ACCURATE	CROSS FROM BYLINE	CROSS HIGH	CROSS LOW	CROSS BLOCKED
1	C. Doyle	25 / 22	88	11 / 8	0 / 0	0 / 0	0 / 0	0	0	0	0
22	N. Knight-Percival	22 / 16	73	5 / 2	1 / 0	0 / 0	0 / 0	0	0	0	0
5	M. Kilgallon	23 / 16	70	7 / 4	1 / 0	0 / 0	0 / 0	0	0	0	0
15	S. Warnock	38 / 29	77	10 / 6	1 / 0	0 / 0	1 / 0	0	1	0	0
29	A. McMahon	44 / 33	75	10 / 6	1 / 0	1 / 0	8 / 4	2	6	1	1
8	T. Dieng	27 / 21	78	5 / 3	0 / 0	1 / 0	1 / 0	1	0	0	1
6	R. Vincelot	20 / 14	70	4 / 1	0 / 0	0 / 0	0 / 0	0	0	0	0
17	A. Gilliead	41 / 27	66	6 / 3	4 / 2	1 / 1	7 / 3	5	3	3	1
30	M. Lund	24 / 21	88	4 / 3	1 / 0	0 / 0	0 / 0	0	0	0	0
21	K. Brünker	13 / 8	62	0 / 0	0 / 0	0 / 0	3 / 0	2	0	0	3
9	C. Wyke	28 / 17	61	0 / 0	0 / 0	0 / 0	1 / 0	1	1	0	0
7	N. Law	19 / 18	95	0 / 0	0 / 0	0 / 0	0 / 0	0	0	0	0
11	D. Poleon	2 / 2	100	0 / 0	0 / 0	0 / 0	0 / 0	0	0	0	0
14	S. McCartan	0 / 0	0	0 / 0	0 / 0	0 / 0	0 / 0	0	0	0	0

## MATCH REPORT GUIDE

### SECTION 1

#### AVERAGE POSITIONS

Players position is calculated on an average detected point which takes into consideration every kind of action, including those with no ball possession.  
White-filled circles are substitutes indicators.

### SECTION 2

#### GENERALS

##### Average position

It shows the barycentre of the team, considering the average place of its actions.

#### CONSTRUCTION

##### Actions started by goalkeeper

It considers all the actions started by the goalkeeper. It will be considered as a single one even if inside the same action he is involved more than once before the ball crosses the halfway line.

##### Long pass

Number of throws beyond the halfway line.

##### Low

Number of throws to a fellow teammate inside his half of the field.

##### Right

Number of actions crossing the halfway line in the right side.

##### Left

Number of actions crossing the halfway line in the left side.

##### Center

Number of actions crossing the halfway line in the central area.

##### Failed

Number of actions stopped before crossing the halfway line.

#### ATTACKING PLAY

##### Actions finalization

It shows team offensive dangerousness and the way it is carried out.

##### Shot from outside of penalty area

Number of team shots from outside the penalty area.

##### Crosses

It shows how many finalizations are completed straight after a cross from the flanks.

### **Build-Up play**

It shows how many finalizations are completed straight after a build-up play.

### **Long ball**

It shows how many finalizations are completed straight after a long ball.

## **DEFENSIVE**

### **Final Third Entries**

Number of times the opponent team plays the ball between the halfway line and the penalty area.

### **Fouls near the box**

Number of fouls committed by the team nearby its penalty areas

## SECTION 3

## **TERRITORIAL COVERAGE**

### **Ball possession recovery**

It only takes into consideration the actual number of ball possession recoveries, even if temporary. Recoveries caused by opponents mistakes are not considered (i.e. ball kicked out of the pitch by the opponent).

## SECTION 4

## **DUELS**

### **Attacking duels**

Number of duels carried out when the team has ball possession.

### **Defensive duels**

Number of duels carried out when the opponent team has ball possession.

## SECTION 7

## **PASSES**

Players position is calculated on an average detected point based on the position occupied, considering every kind of action, including those with no ball possession.

Lines connecting players show the number of passes. The thicker is the line, the higher is the number of passes between each other.