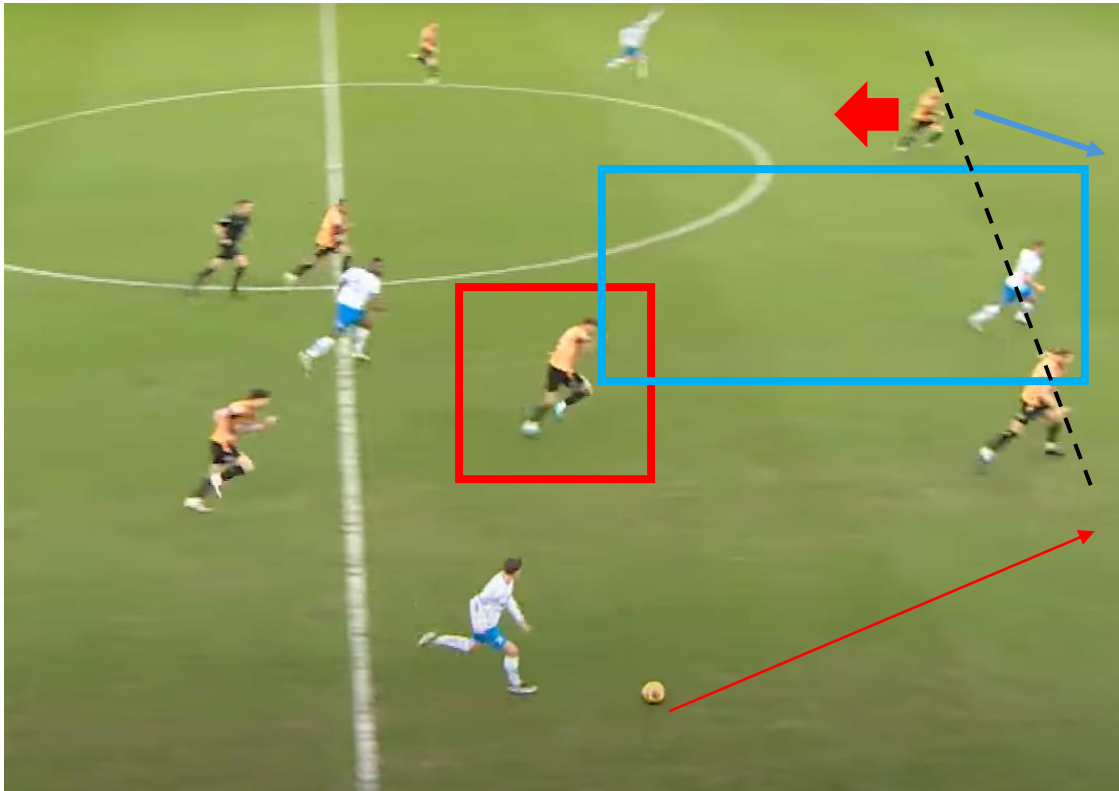


BARROW

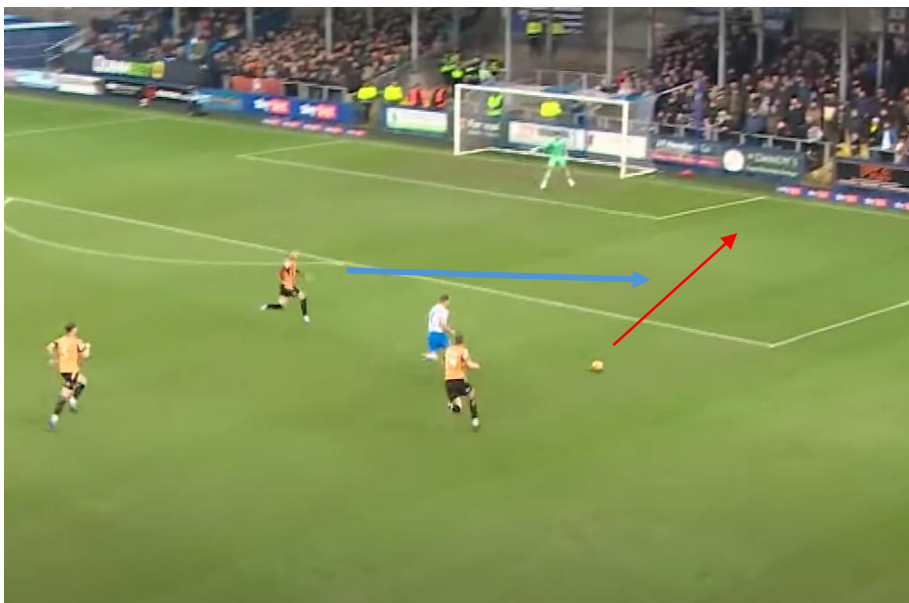
1st Goal



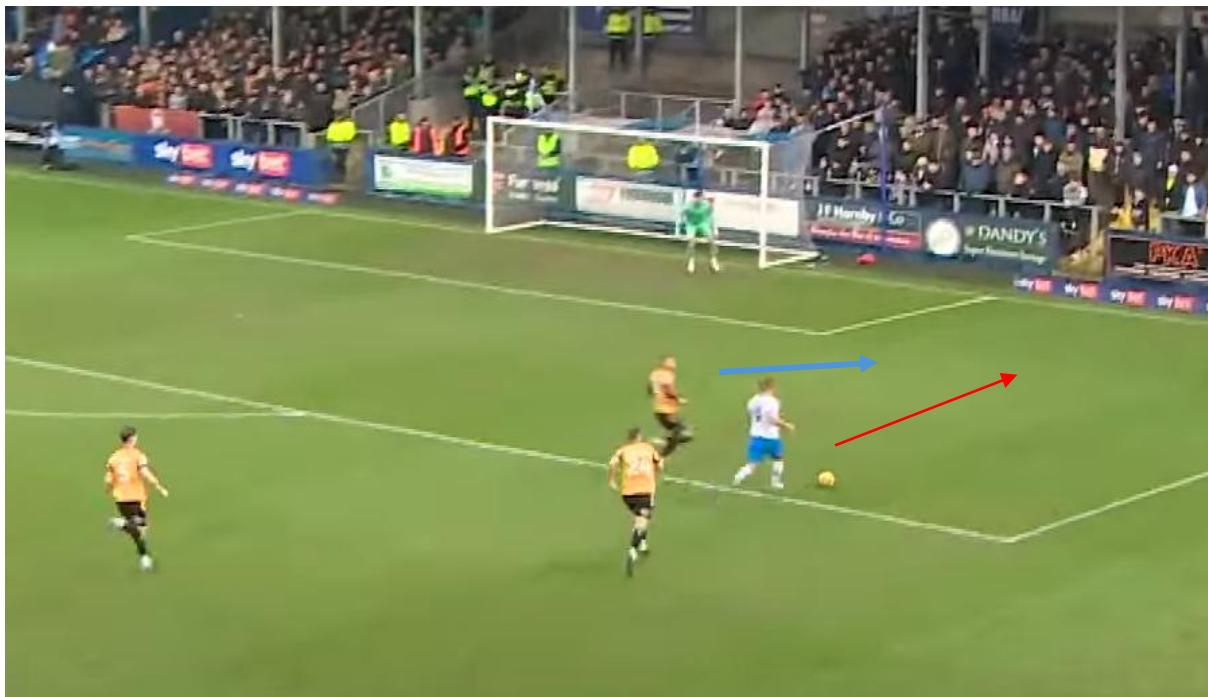
Byrne (red box) is out of his central defensive position leaving the central area (blue box) vacant for the Barrow forward. The back 3 is now a back 2. Baldwin has two options:

- He could step up (thick red arrow) in anticipation of the forward pass to play offside,
- He can follow the run (blue arrow).

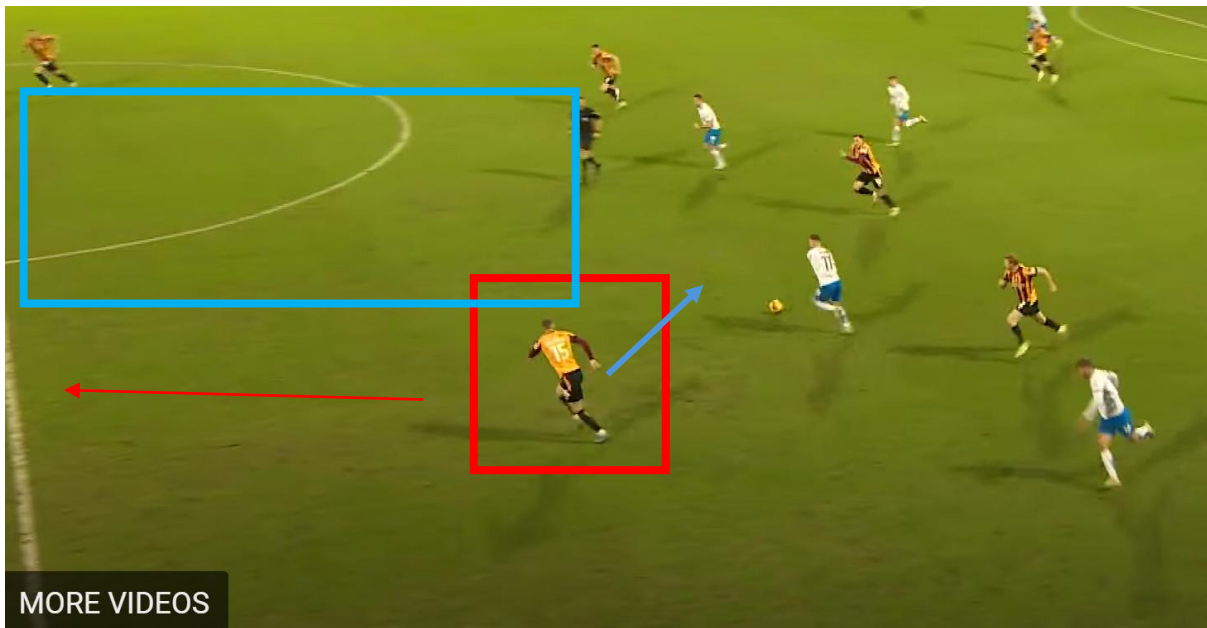
He takes option b) but then makes a very rash, unnecessary challenge in the box leading to the penalty. He did not need to make a 'challenge', he could have forced him towards the dead ball line.



There is little danger from this position unless the forward scores a 'worldy'!!

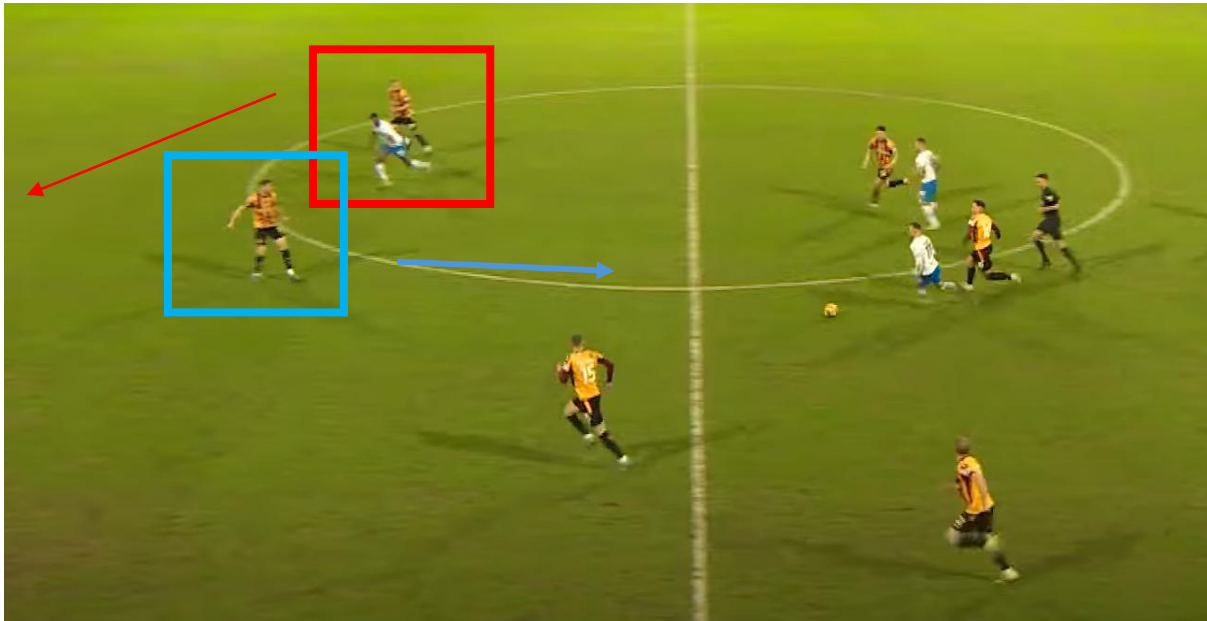


2nd Goal

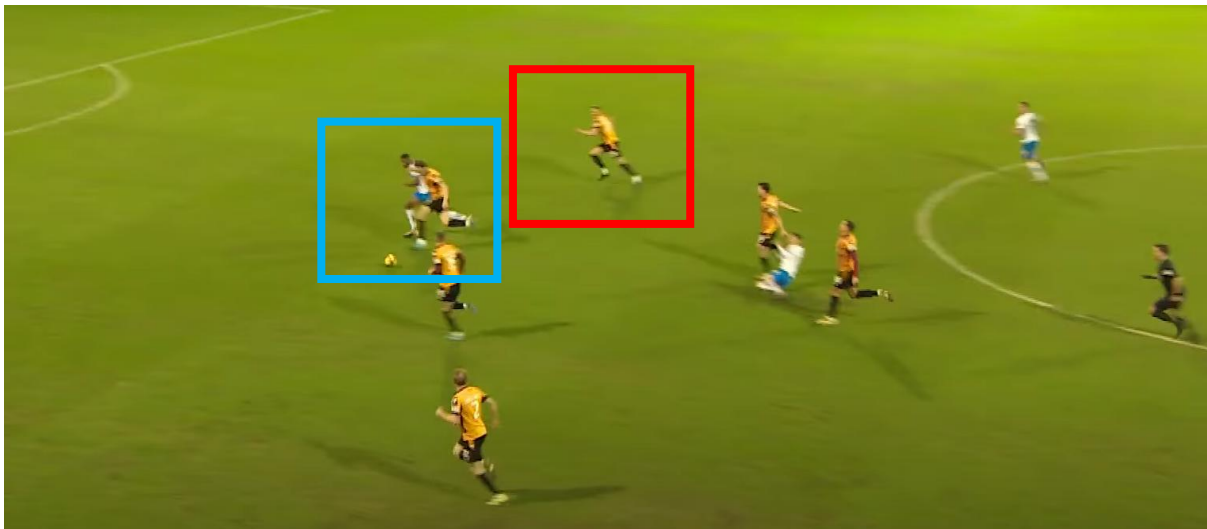


In the second goal, Baldwin is out of the defensive line with his other central defenders and there is a massive gap in midfield. Baldwin could engage the Barrow player (blue arrow) but chooses to be rather passive and attempts to 'regain' his position (red arrow) without engaging or really influencing the play.





As play continues, Shepherd (red box) is the closest defender to the Barrow scorer (less than 2 yards!) and is facing the same direction and can see the forwards planned run. Byrne (blue box) is facing the opposite direction and the oncoming player where the immediate danger is. It should be Shepherd's responsibility to track the run of the forward rather than expecting Byrne to dis-engage the onrushing player and turn to track the runner. It allows the runner to get behind the defence with nobody between him and goal. The run takes Shepherd and Byrne out of the game.





As the scorer bears down on goal I would have expected Shepherd to 'bust a gut' to get into some sort of defensive position to stop the goal a la Stephen Darby on the goalline.



In summary, on both occasions one of the 3 defenders breaks the line and leaves only 2 central defenders. There is a large gap between the central defenders and the midfielders allowing the opposition to run at them and find a telling forward pass. All 3 of the central defenders make incorrect decisions (in my opinion) to track or not track the runners. Individually and collectively poor defending against a side that had offered very little and average a goal a game.