



01/05/2018
LEAGUE ONE 2017/2018

1 - 1



BRADFORD CITY

Coach : Grayson Simon

WALSALL

Coach : Keates Dean

Boyeson Carl Northern Commercials Stadium (Bradford, West Yorkshire) 96' (47 + 49)

1	GKP	C. Doyle ('85)				13	GKP	L. Roberts ('94)							
29	DEF	A. McMahon ('86)				6	DEF	N. Devlin ('93)							
15	DEF	S. Warnock ('81)	78'	←		3	DEF	L. Leahy ('92)							
22	DEF	N. Knight-Percival ('87)				5	DEF	J. Guthrie ('92)							
8	DEF	T. Dieng ('92)	79'	■		23	DEF	J. Fitzwater ('97)							
6	MID	R. Vincelot ('85)				24	DEF	K. Roberts ('97)							
30	MID	M. Lund ('90)			46'	⚽	7	MID	A. Chambers ('80)						
17	MID	A. Gilliead ('96)	55'	←		11	MID	K. Morris ('94)							
18	MID	C. Guy ('96)	67'	←	66'	■	4	MID	G. Dobson ('97)						
14	FWD	S. McCartan ('94)					10	MID	E. Oztumer ('91)	87'	←	79'	■	22'	⚽
9	FWD	C. Wyke ('92)					20	FWD	A. Bakayoko ('96)						

SUBSTITUTES

3	DEF	A. Chicksen ('90)	78'	→		8	MID	F. Cuvelier ('92)	87'	→	
27	FWD	J. Gibson ('98)	55'	→							
28		C. Hawkes (')	67'	→							

BACKUPS

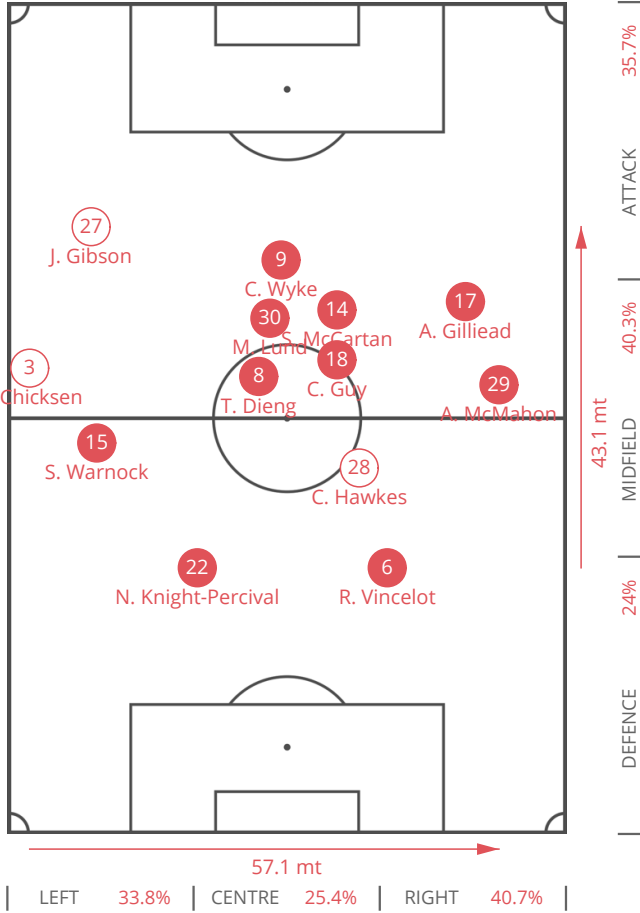
23	GKP	L. Raeder ('93)				1	GKP	M. Gillespie ('92)			
7	MID	N. Law ('88)				15	DEF	L. Kinsella ('96)			
24	MID	D. Devine ('97)				17	MID	R. Flanagan ('94)			
34	FWD	O. Patrick ('96)				25	MID	M. Kouhyar ('97)			
						36	MID	M. Candlin (')			
						18	FWD	J. Ngoy ('97)			

BRADFORD CITY

AVERAGE POSITIONS

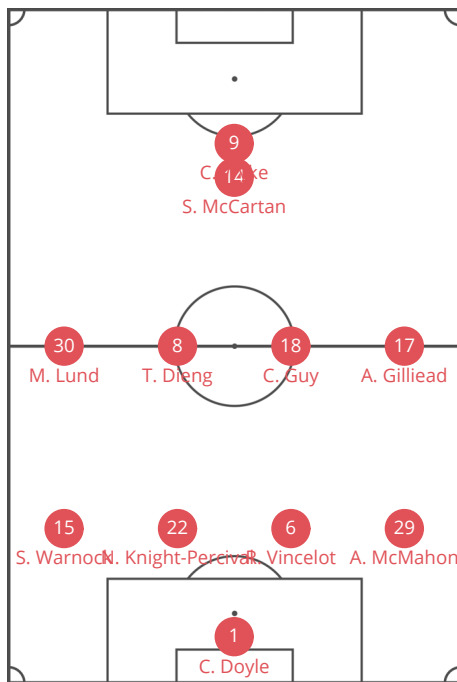
● STARTERS

○ SUBSTITUTES



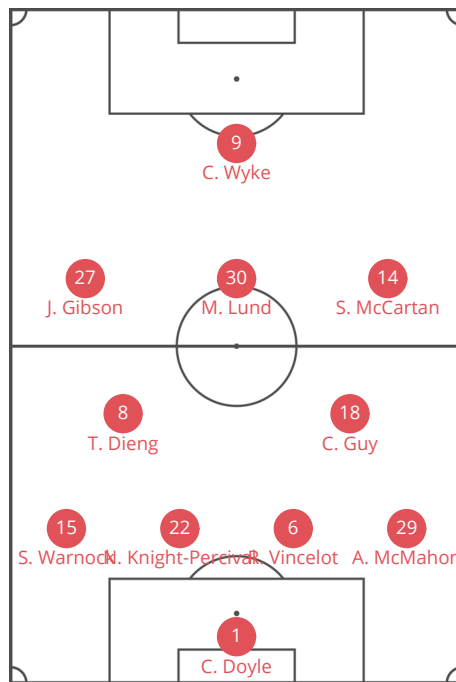
PLAYERS

22	DEF	N. Knight-Percival
8	DEF	T. Dieng
15	DEF	S. Warnock
29	DEF	A. McMahon
6	MID	R. Vincelot
18	MID	C. Guy
17	MID	A. Gilliead
30	MID	M. Lund
9	FWD	C. Wyke
14	FWD	S. McCartan
3	DEF	A. Chicksen
27	FWD	J. Gibson
28		C. Hawkes



4-4-1-1

Used from 0' >> 56'



4-2-3-1

Used from 56' >> 68'



4-2-3-1

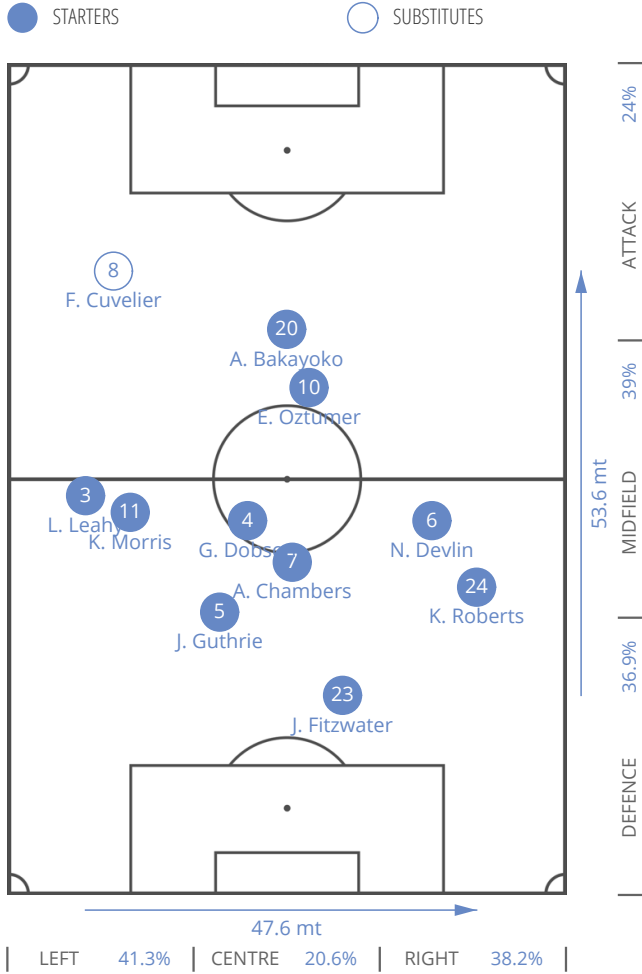
Used from 68' >> 80'



4-2-3-1
Used from 80' >> 96'

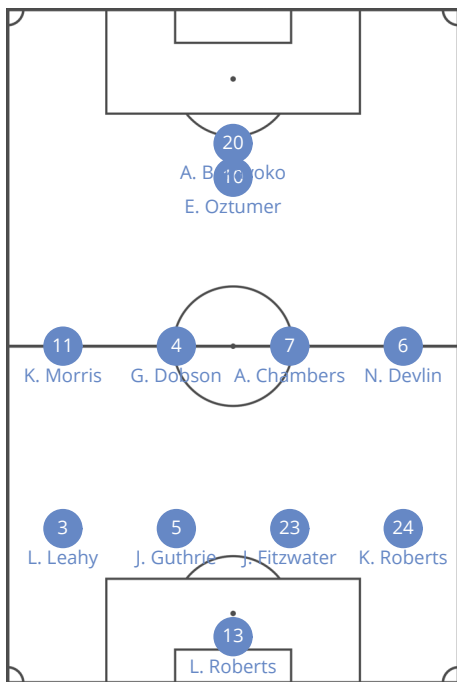
WALSALL

AVERAGE POSITIONS

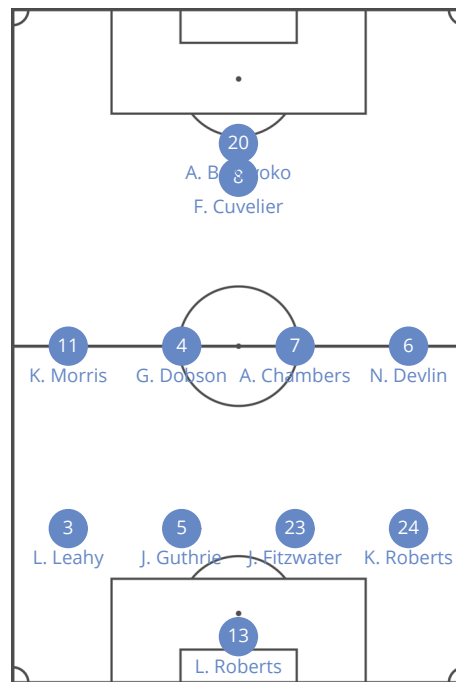


PLAYERS

24	DEF	K. Roberts
6	DEF	N. Devlin
23	DEF	J. Fitzwater
5	DEF	J. Guthrie
3	DEF	L. Leahy
7	MID	A. Chambers
4	MID	G. Dobson
11	MID	K. Morris
10	MID	E. Oztumer
20	FWD	A. Bakayoko
8	MID	F. Cuvelier



4-4-1-1
Used from 0' >> 88'



4-4-1-1
Used from 88' >> 96'



BRADFORD CITY



WALSALL

1 HALF

2 HALF

TOTAL

1 HALF

2 HALF

TOTAL

GENERALS

BALL POSSESSION	17 min	18 min	35 min	13 min	14 min	27 min
AVERAGE POSITION	57.4 mt	55.3 mt	56.35 mt	48 mt	48.9 mt	48.45 mt
CORNERS	1	1	2	1	0	1
FREE KICK CROSS	2	0	2	2	2	4
FREE KICK SHOT	0	0	0	0	0	0
FOULS	3	4	7	4	4	8
OFFSIDES	0	0	0	0	0	0

CONSTRUCTION

PASSES (% ACCURATE)	242 (79.8%)	258 (77.9%)	500 (78.8%)	110 (60%)	134 (56.7%)	244 (58.2%)
- Final Third Entries (% Accurate)	82 (80.5%)	70 (75.7%)	152 (78.3%)	15 (60%)	26 (42.3%)	41 (48.8%)
- Other (% Accurate)	160 (79.4%)	188 (78.7%)	348 (79%)	95 (60%)	108 (60.2%)	203 (60.1%)
LONG PASSES (% ACCURATE)	41 (70.7%)	37 (54.1%)	78 (62.8%)	34 (41.2%)	37 (45.9%)	71 (43.7%)
THROUGH PASSES (% ACCURATE)	1 (0%)	2 (50%)	3 (33.3%)	3 (66.7%)	2 (0%)	5 (40%)
COUNTERATTACKS	0	2	2	0	1	1
ACTIONS STARTED BY GOALKEEPER	23	13	36	11	15	26
- Long pass	17	8	25	7	14	21
- LOW	6	5	11	4	1	5
-- % Right	16.7%	80%	45.5%	50%	100%	60%
-- % Left	33.3%	0%	18.2%	25%	0%	20%
-- % Center	50%	0%	27.3%	25%	0%	20%
-- % Failed	0%	20%	9.1%	0%	0%	0%



BRADFORD CITY



WALSALL

	1 HALF	2 HALF	TOTAL	1 HALF	2 HALF	TOTAL
ATTACKING PLAY						
OPPORTUNITY (% SUCCESSFUL)	2 (50%)	5 (0%)	7 (14.3%)	3 (33.3%)	(0%)	3 (33.3%)
SHOTS	5	7	12	4	0	4
Shot from outside of penalty area	2	3	5	0	0	0
Shot from inside of penalty area	3	4	7	4	0	4
ACTIONS FINALIZATION	21	14	35	15	3	18
- Shot from outside of penalty area	2	3	5	0	0	0
- CROSSES	4	5	9	1	0	1
-- From left (%)	4 (100%)	2 (40%)	6 (66.7%)	0	0	0 (0%)
-- From right (%)	0	3 (60%)	3 (33.3%)	1 (100%)	0	1 (100%)
- Build-Up play	15	5	20	13	3	16
- Long ball	0	1	1	1	0	1
DEFENSIVE						
SAVES	2	0	2	0	3	3
CLEARANCES	4	4	8	3	7	10
- Low	0	0	0	0	0	0
- High	4	4	8	3	7	10
BALL RECOVERY	58	59	117	62	75	137
- End action	27	22	49	16	21	37
- Real recovery	-5	7	2	10	33	43
- Temporary recovery	36	30	66	36	21	57
FINAL THIRD ENTRIES	45	42	87	28	32	60
FOULS NEAR THE BOX	0	0	0	0	0	0

TERRITORIAL COVERAGE



BRADFORD CITY



WALSALL

● FIRST HALF

○ SECOND HALF

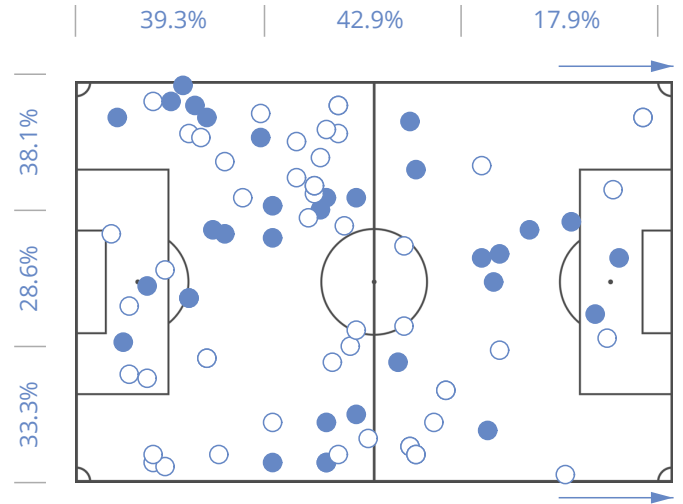
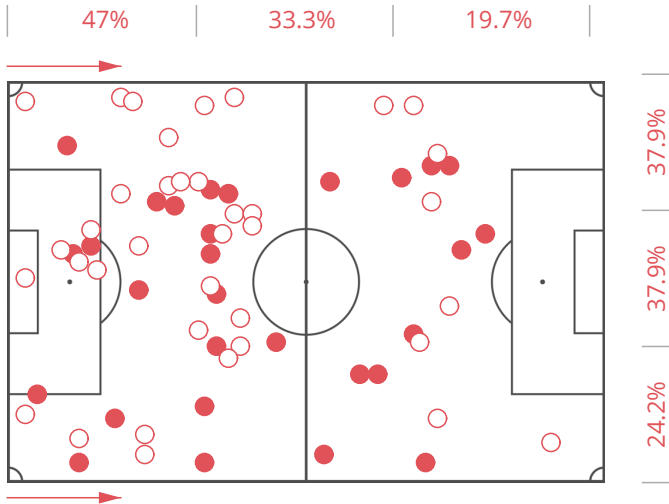
● FIRST HALF

○ SECOND HALF

66

BALL POSSESSION RECOVERY

84



BEST PLAYERS

WORST PLAYERS

N. Knight-Percival (90')	14	A. Chicksen (12')	1
T. Dieng (90')	12	S. McCartan (90')	2
R. Vincelot (90')	11	C. Wyke (90')	2
S. Warnock (78')	7	M. Lund (90')	3
C. Guy (67')	7	C. Hawkes (23')	3

BEST PLAYERS

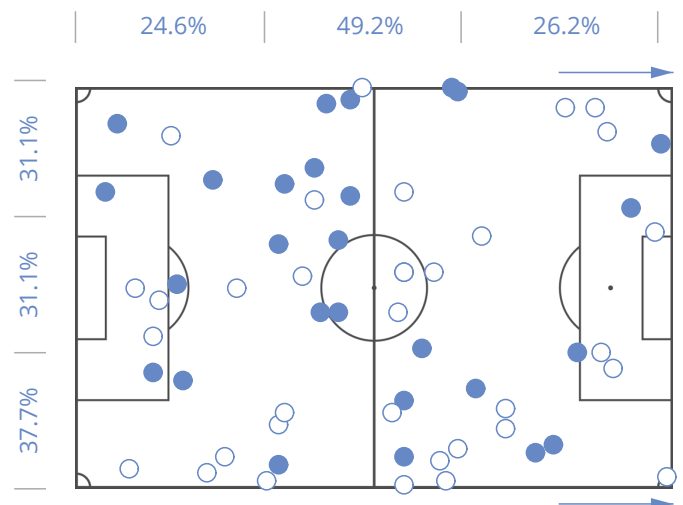
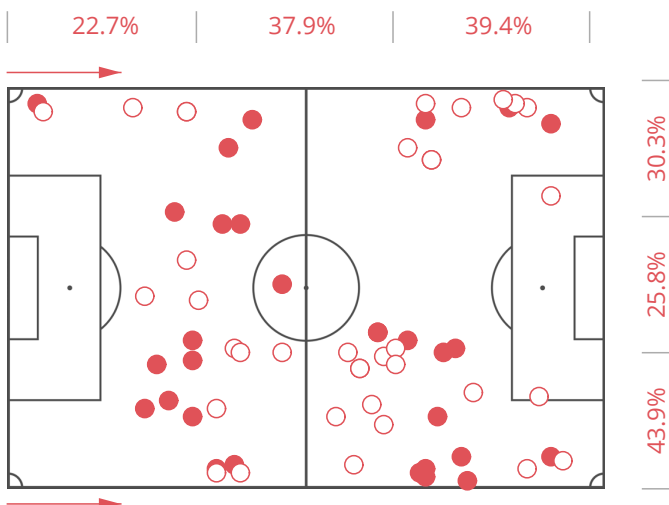
WORST PLAYERS

K. Roberts (90')	20	J. Fitzwater (90')	5
G. Dobson (90')	10	A. Bakayoko (90')	6
N. Devlin (90')	8	A. Chambers (90')	6
J. Guthrie (90')	8	L. Leahy (90')	7
L. Leahy (90')	7	K. Morris (90')	7

66

BALL POSSESSION LOSS

61



BEST PLAYERS

WORST PLAYERS

C. Guy (67')	1	T. Dieng (90')	11
A. Chicksen (12')	1	A. McMahon (90')	9
J. Gibson (35')	2	S. Warnock (78')	9
C. Hawkes (23')	2	S. McCartan (90')	8
N. Knight-Percival (90')	3	C. Wyke (90')	7

BEST PLAYERS

WORST PLAYERS

J. Guthrie (90')	2	N. Devlin (90')	10
J. Fitzwater (90')	3	K. Roberts (90')	10
K. Morris (90')	5	L. Leahy (90')	8
A. Chambers (90')	5	G. Dobson (90')	7
E. Oztumer (87')	5	A. Bakayoko (90')	6

TERRITORIAL COVERAGE



BRADFORD CITY



WALSALL

● FIRST HALF

○ SECOND HALF

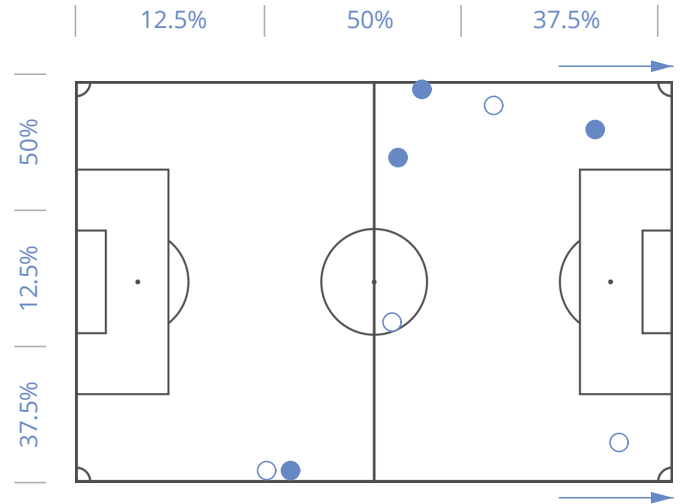
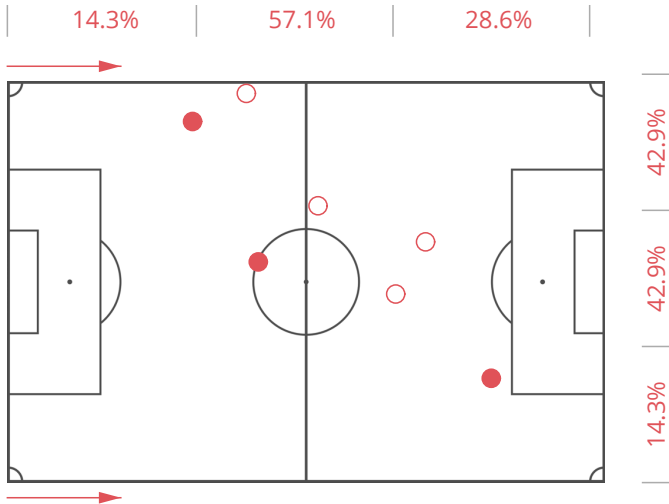
● FIRST HALF

○ SECOND HALF

7

FOULS COMMITTED

8



WORST PLAYERS

T. Dieng (90')	2
C. Wyke (90')	2
N. Knight-Percival (90')	1
R. Vincelot (90')	1
A. Gilliead (55')	1

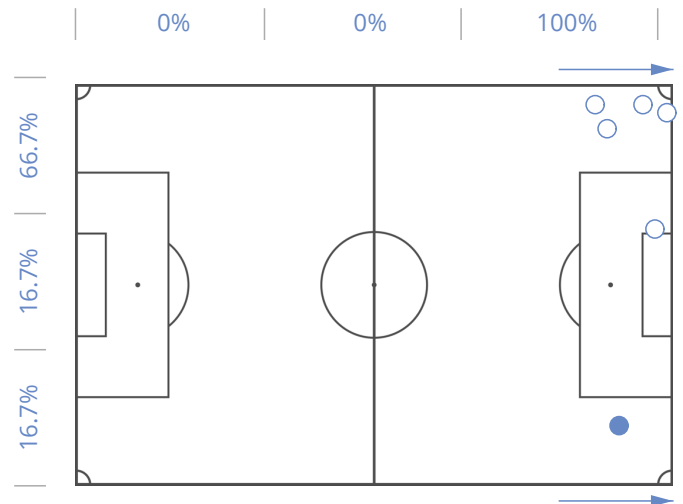
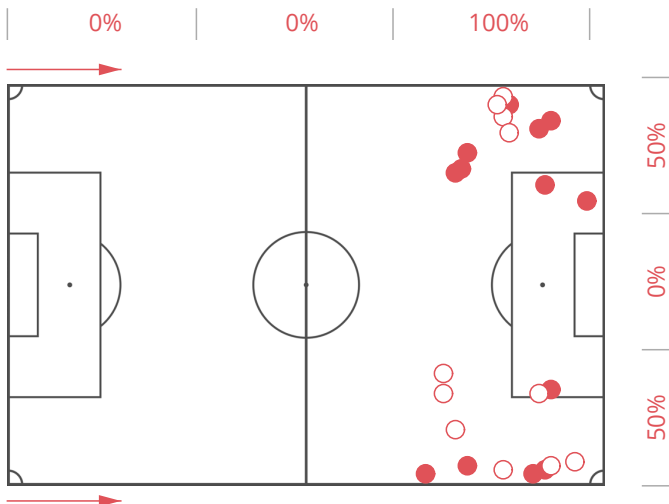
WORST PLAYERS

A. Bakayoko (90')	3
J. Guthrie (90')	2
K. Roberts (90')	1
A. Chambers (90')	1
E. Oztumer (87')	1

24

CROSSES

6



BEST PLAYERS

A. McMahon (90')	12
S. Warnock (78')	4
M. Lund (90')	3
J. Gibson (35')	2
T. Dieng (90')	1

BEST PLAYERS

L. Leahy (90')	3
G. Dobson (90')	1
K. Roberts (90')	1
F. Cuvelier (3')	1

TERRITORIAL COVERAGE



BRADFORD CITY



WALSALL

● FIRST HALF

○ SECOND HALF

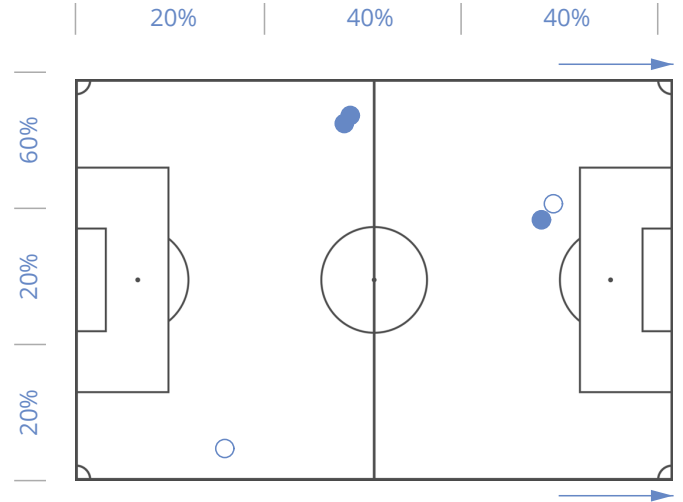
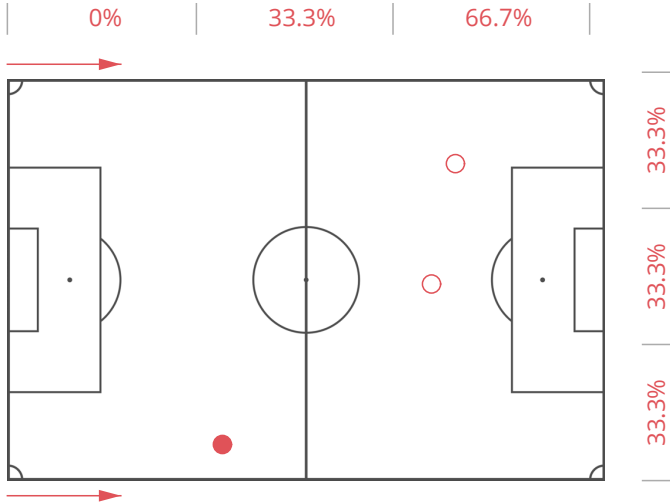
● FIRST HALF

○ SECOND HALF

3

THROUGH PASSES

5



BEST PLAYERS

S. McCartan (90')	1
R. Vincelot (90')	1
J. Gibson (35')	1

BEST PLAYERS

L. Leahy (90')	2
E. Oztumer (87')	2
K. Roberts (90')	1

DUELS

● FIRST HALF

○ SECOND HALF



BRADFORD CITY



WALSALL

● WON

● NEUT.

● LOST

● WON

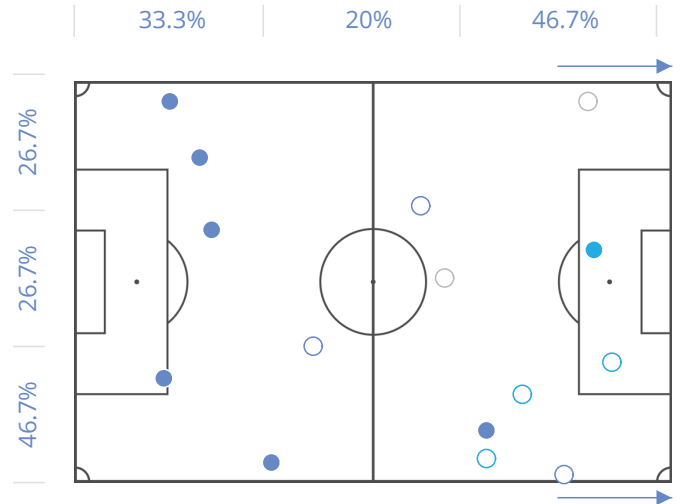
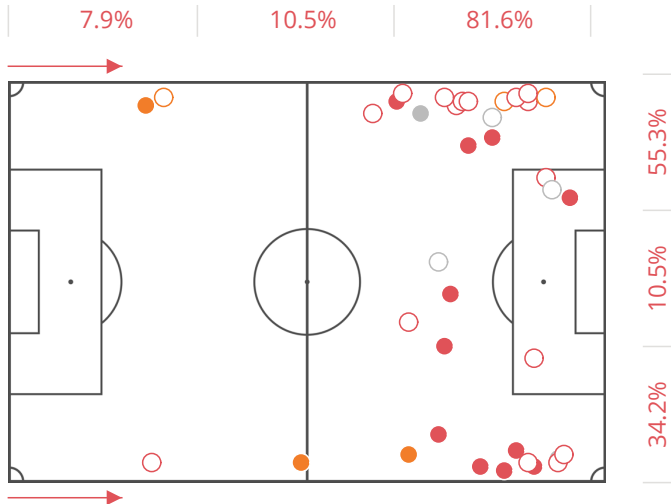
● NEUT.

● LOST

38

1 VS 1 DRIBBLING

15



BEST PLAYERS

	DUELS	WON	NEUT.	LOST
J. Gibson (35')	11	8	2	1
S. McCartan (90')	7	4	2	1
A. Gilliead (55')	7	5	1	1
A. McMahon (90')	5	4	0	1
C. Wyke (90')	3	2	0	1

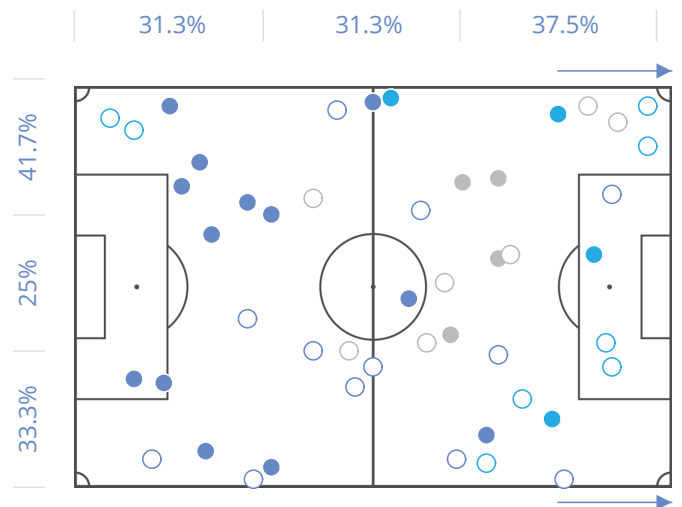
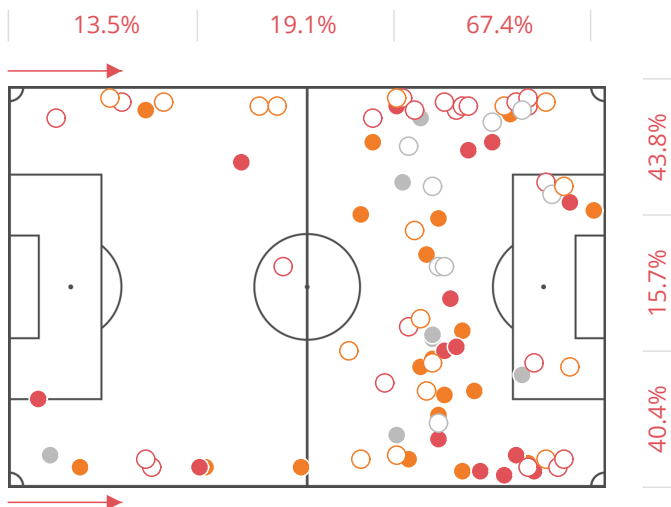
BEST PLAYERS

	DUELS	WON	NEUT.	LOST
A. Bakayoko (90')	4	2	2	0
N. Devlin (90')	3	2	0	1
K. Morris (90')	2	2	0	0
G. Dobson (90')	2	1	1	0
K. Roberts (90')	2	1	1	0

107

ATTACKING DUELS

58



BEST PLAYERS

	DUELS	WON	NEUT.	LOST
S. McCartan (90')	18	4	13	1
C. Wyke (90')	16	5	5	6
J. Gibson (35')	16	8	6	2
A. Gilliead (55')	10	5	4	1
A. McMahon (90')	8	5	2	1

BEST PLAYERS

	DUELS	WON	NEUT.	LOST
A. Bakayoko (90')	13	5	4	4
E. Oztumer (87')	9	5	0	4
K. Morris (90')	8	5	3	0
G. Dobson (90')	7	5	1	1
K. Roberts (90')	4	2	2	0

DUELS

● FIRST HALF

○ SECOND HALF



BRADFORD CITY



WALSALL

● WON

● NEUT.

● LOST

● WON

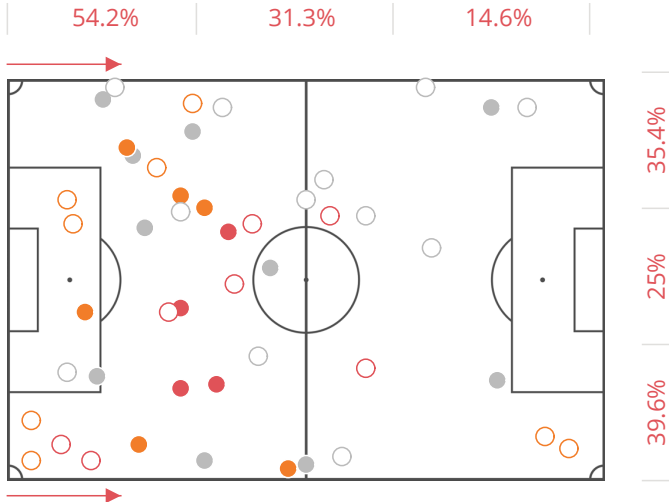
● NEUT.

● LOST

58

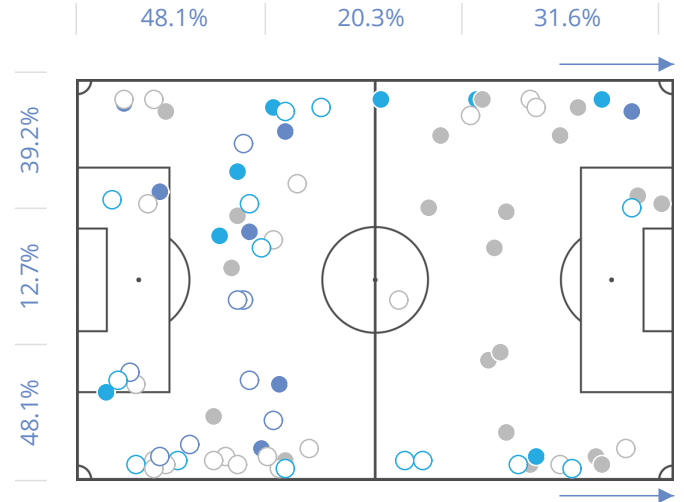
DEFENSIVE DUELS

107



BEST PLAYERS

	DUELS	WON	NEUT.	LOST
T. Dieng (90')	8	2	2	4
N. Knight-Percival (90')	8	2	5	1
R. Vincelot (90')	6	3	1	2
S. Warnock (78')	6	0	1	5
C. Guy (67')	5	2	1	2



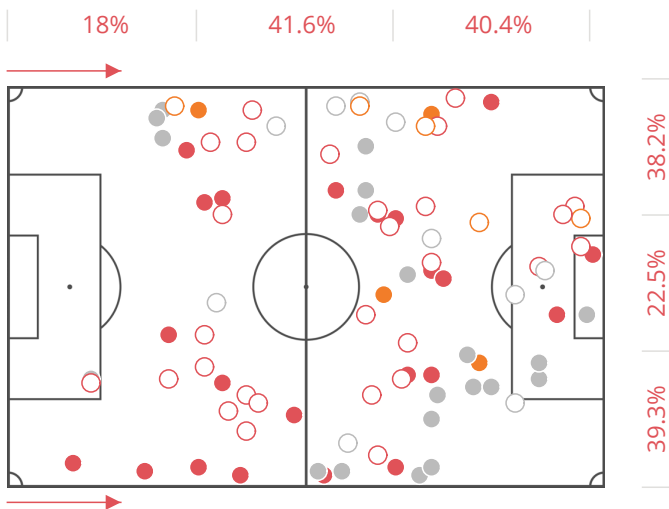
BEST PLAYERS

	DUELS	WON	NEUT.	LOST
K. Roberts (90')	20	4	4	12
J. Guthrie (90')	11	3	2	6
G. Dobson (90')	10	2	2	6
L. Leahy (90')	7	1	3	3
K. Morris (90')	7	0	4	3

101

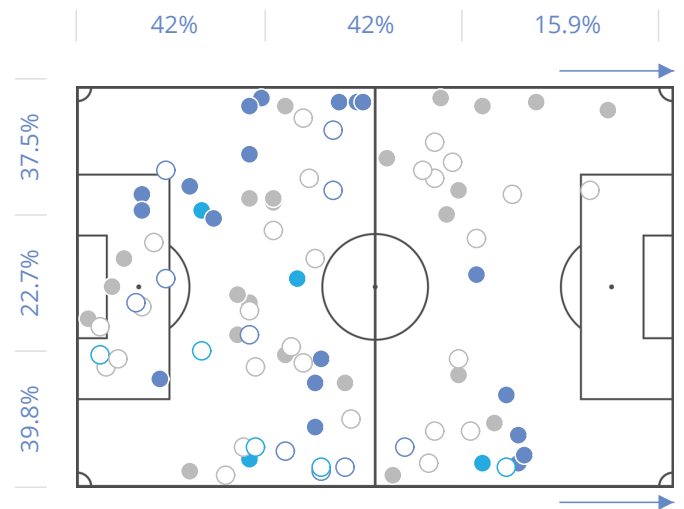
AERIAL DUELS

101



BEST PLAYERS

	DUELS	WON	NEUT.	LOST
C. Wyke (90')	29	18	5	6
T. Dieng (90')	11	4	2	5
A. McMahon (90')	11	10	0	1
M. Lund (90')	8	4	0	4
N. Knight-Percival (90')	7	5	0	2



BEST PLAYERS

	DUELS	WON	NEUT.	LOST
A. Bakayoko (90')	18	4	1	13
A. Chambers (90')	15	4	1	10
N. Devlin (90')	9	3	3	3
J. Guthrie (90')	9	3	0	6
K. Morris (90')	8	3	0	5

DUELS GRID

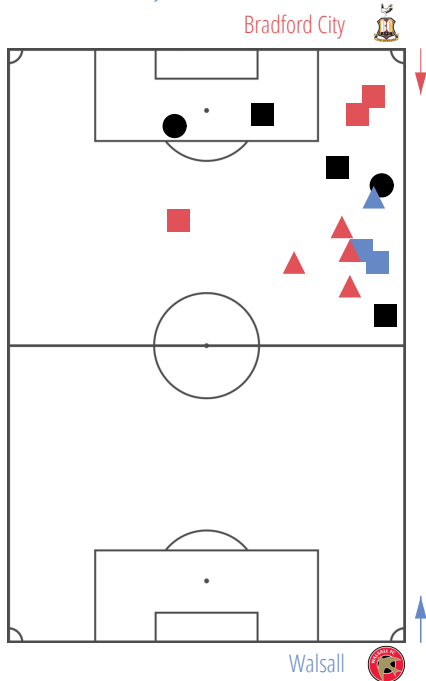
WALSALL

BRADFORD CITY

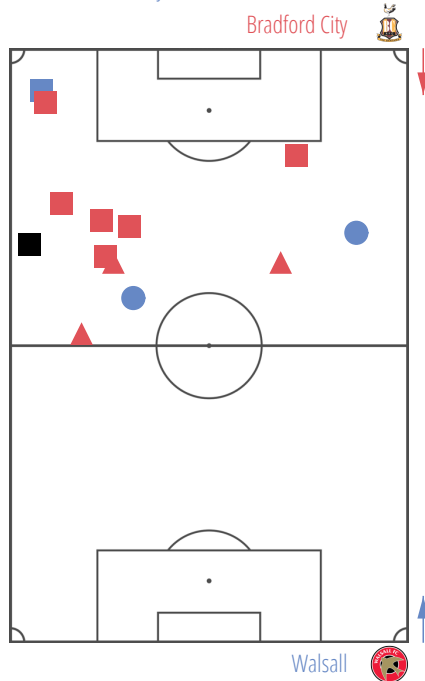
	13. L. Roberts	24. K. Roberts	6. N. Devlin	23. J. Fitzwater	5. J. Guthrie	3. L. Leahy	7. A. Chambers	4. G. Dobson	11. K. Morris	10. E. Oztumer	20. A. Bakayoko	8. F. Cuvelier
1. C. Doyle												
22. N. Knight-Percival	1							1		1	15	
8. T. Dieng		2	4	1	1	1	6	6		4	2	
15. S. Warnock			2					1		4	6	
29. A. McMahon					1	2		2	8		10	
6. R. Vincelot							1		3		13	
18. C. Guy						1	2	3		3	1	
17. A. Gilliead					1	5	1	1	7	1		
30. M. Lund		2	3		1	1	6		2	1		
9. C. Wyke		13	2	8	11	3	10	2	1			
14. S. McCartan		6	2	1	2	3	4	3		1		1
3. A. Chicksen		3	1									
27. J. Gibson		9	2	1			1	2				
28. C. Hawkes						1		1	1	1		1

△ AIR CHALL. GROUND CHALL. ○ DRIBBLES
● WON BY BRADFORD CITY ● WON BY WALSALL ● NEUTRAL DUELS

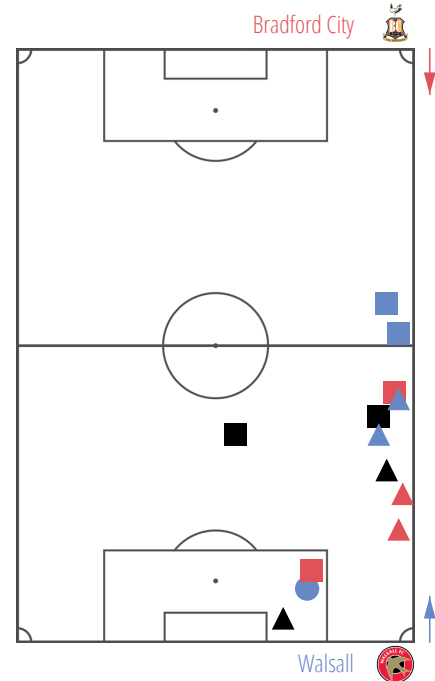
15 N. Knight-Percival
A. Bakayoko



13 R. Vincelot
A. Bakayoko



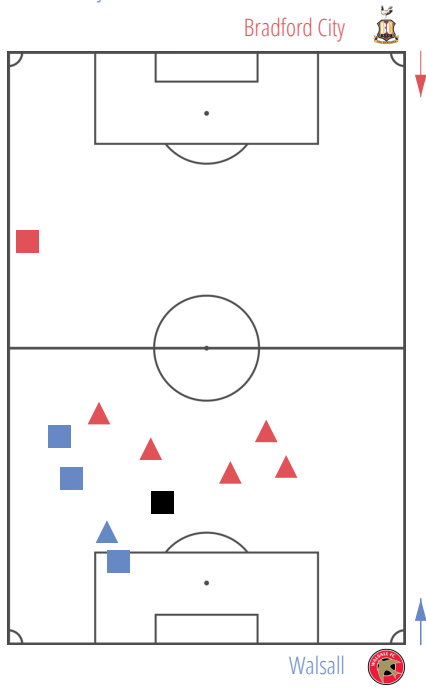
13 C. Wyke
K. Roberts



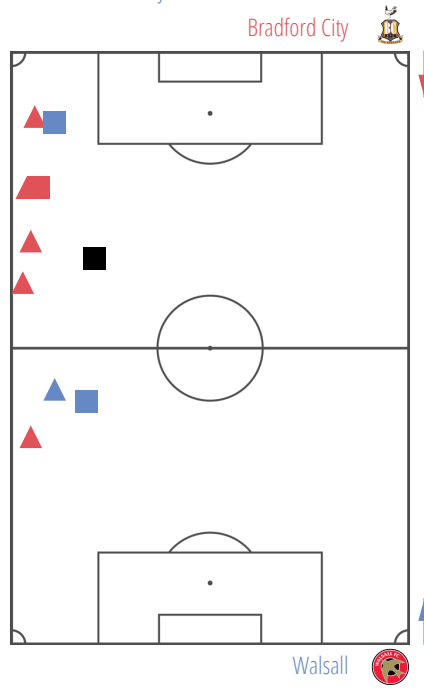
DUELS GRID

△ AIR CHALL. □ GROUND CHALL. ○ DRIBBLES
● WON BY BRADFORD CITY ● WON BY WALSALL ● NEUTRAL DUELS

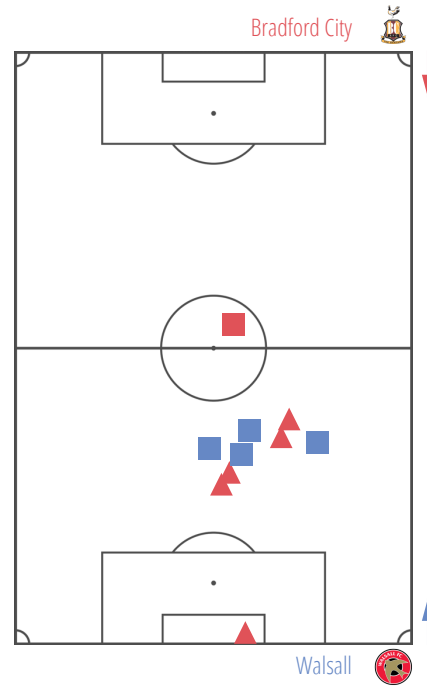
11 C. Wyke
J. Guthrie



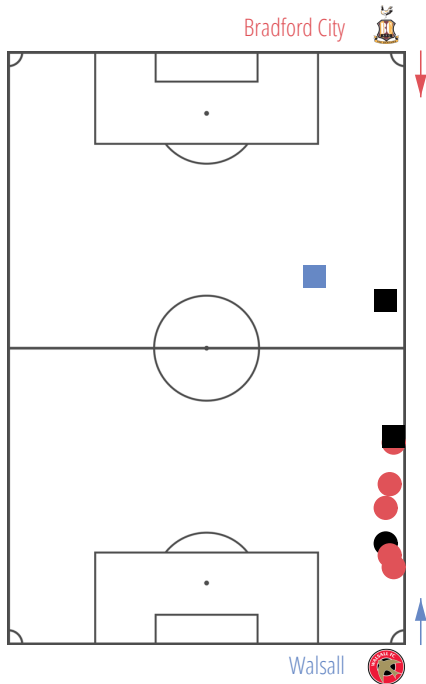
10 A. McMahon
A. Bakayoko



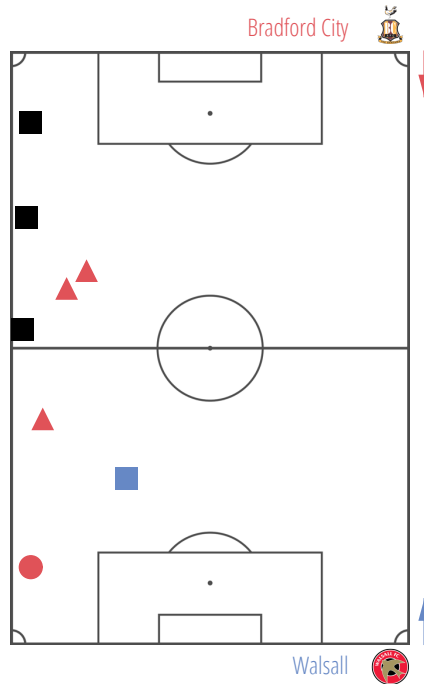
10 C. Wyke
A. Chambers



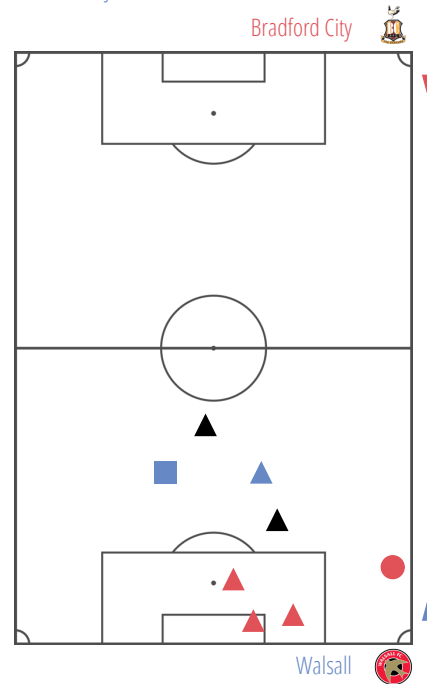
9 J. Gibson
K. Roberts



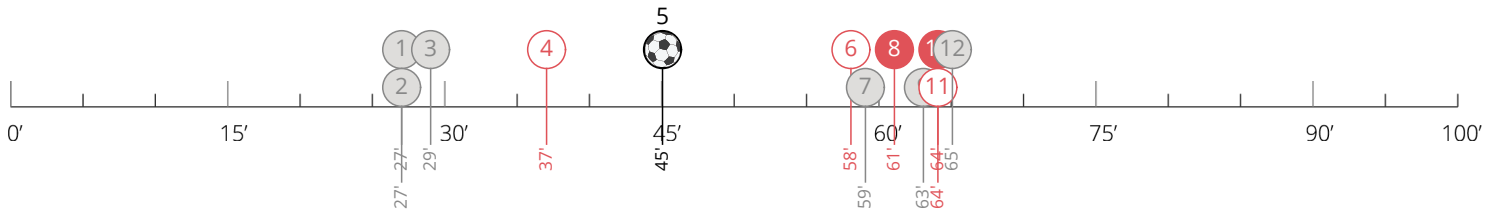
8 A. McMahon
K. Morris



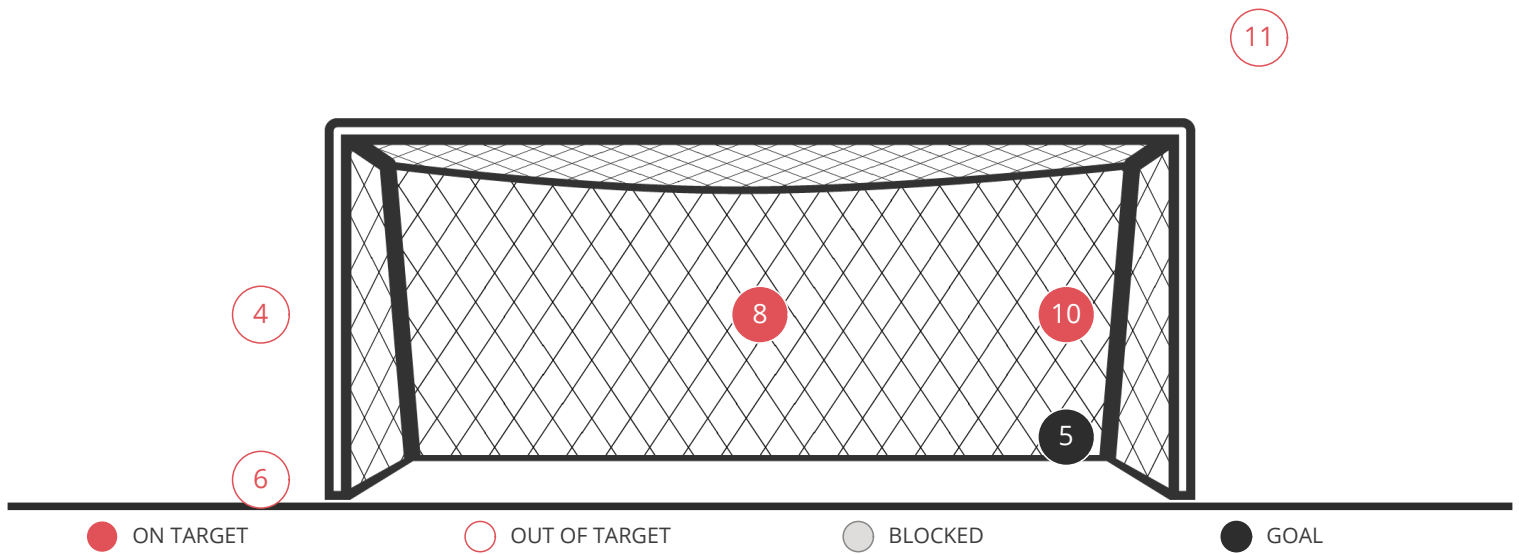
8 C. Wyke
J. Fitzwater



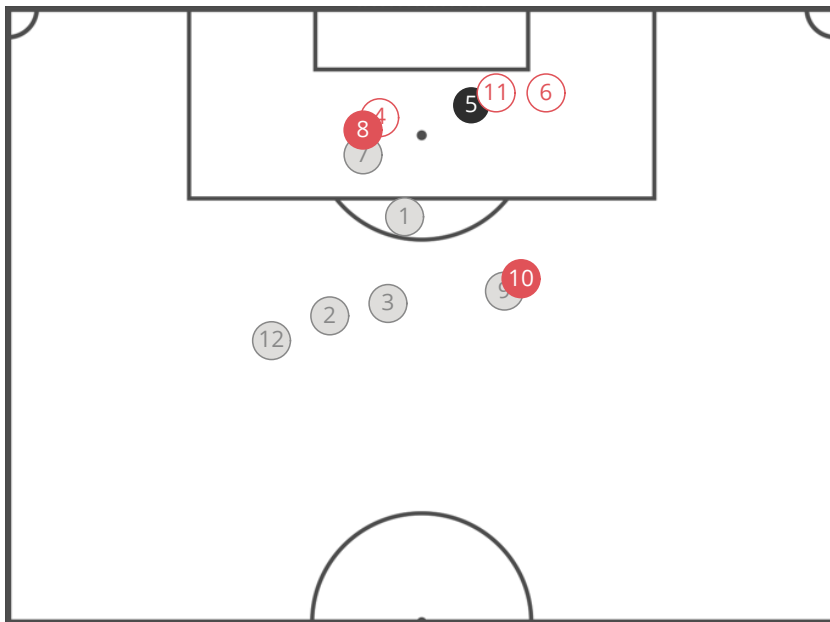
BRADFORD CITY: GOALS AND STRIKES



12 SHOTS	3 ON TARGET	6 BLOCKED	1 GOALS
--------------------	-----------------------	---------------------	-------------------



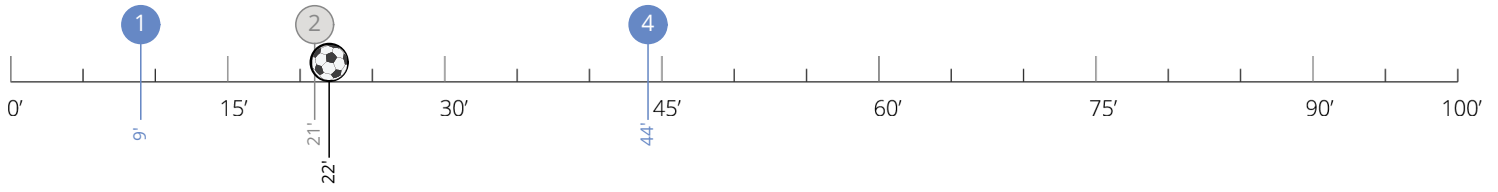
● ON TARGET ○ OUT OF TARGET ● BLOCKED ● GOAL



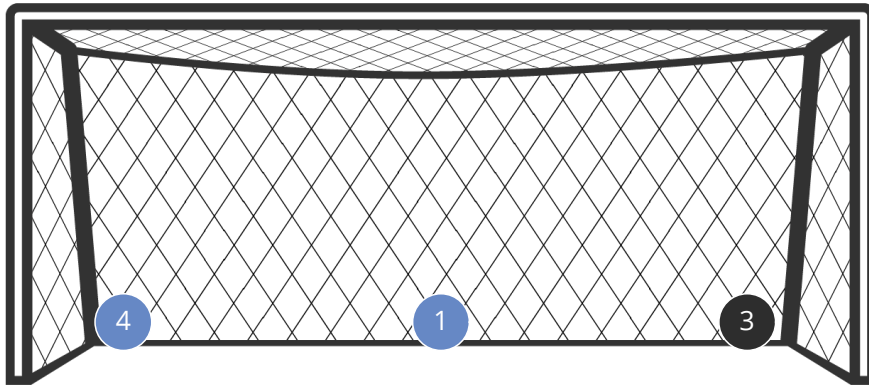
PLAYERS

PLAYERS	FOOT
1 M. Lund	Left
2 C. Guy	Left
3 M. Lund	Left
4 C. Wyke	Heading
5 M. Lund	Heading
6 J. Gibson	Right
7 T. Dieng	Left
8 C. Wyke	Heading
9 S. McCartan	Right
10 S. McCartan	Left
11 A. McMahon	Right
12 C. Guy	Right

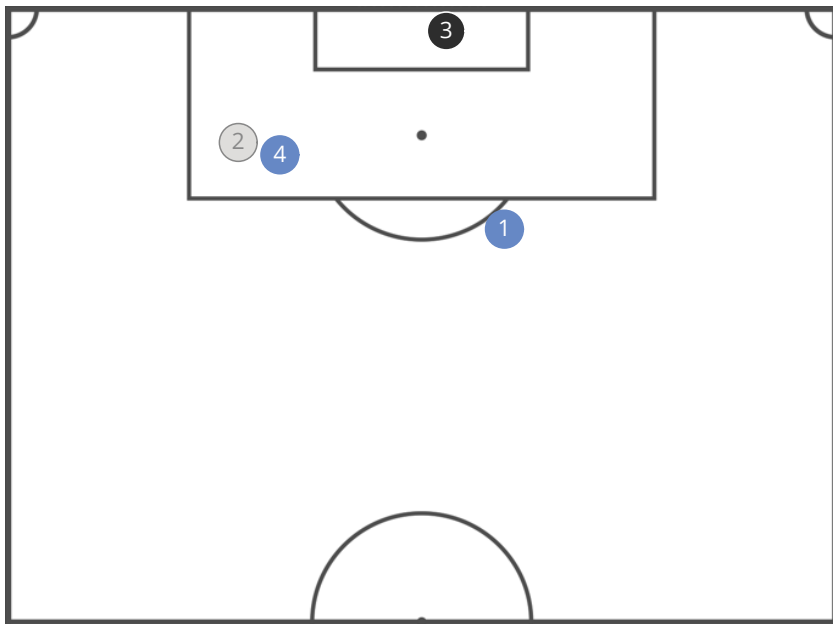
WALSALL: GOALS AND STRIKES



4	3	1	1
SHOTS	ON TARGET	BLOCKED	GOALS



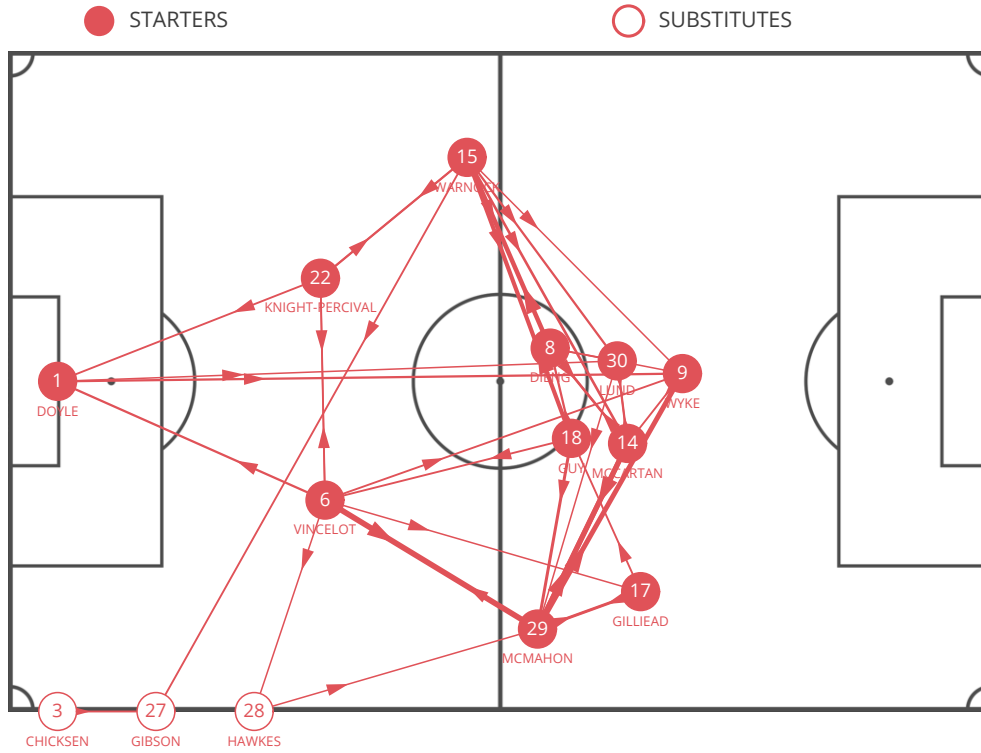
● ON TARGET ○ OUT OF TARGET ● BLOCKED ● GOAL



PLAYERS

	FOOT
1 G. Dobson	Left
2 K. Morris	Left
3 E. Oztumer	Heading
4 E. Oztumer	Left

BRADFORD CITY: PASSES



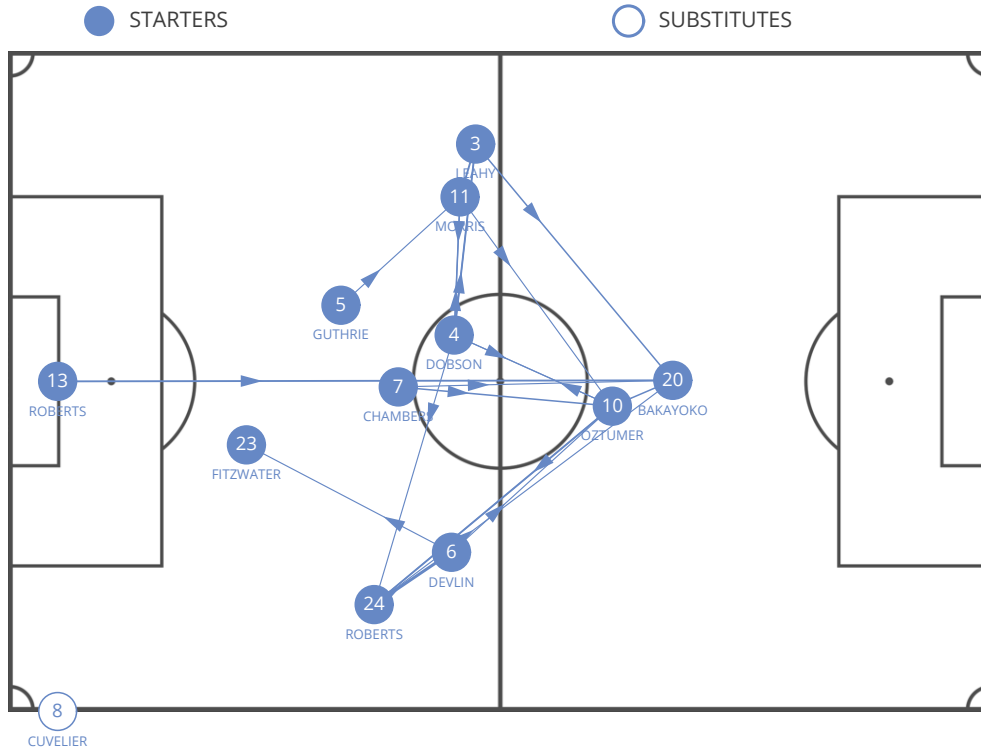
	1. C. Doyle	22. N. Knight-Percival	8. T. Dieng	15. S. Warnock	29. A. McMahon	6. R. Vincelot	18. C. Guy	17. A. Gilliead	30. M. Lund	9. C. Wyke	14. S. McCartan	3. A. Chicksen	27. J. Gibson	28. C. Hawkes
1. C. Doyle	4			2	2 (2)	3			4 (4)	6 (6)	3 (3)			
22. N. Knight-Percival	5	3		6	1 (1)	4			3	2 (2)	3 (1)	2	2	1
8. T. Dieng			12	2	2	1	3		5	2	7	2	1	
15. S. Warnock		4	4	2 (2)	2	6			6	4 (2)	7		5	1
29. A. McMahon		1	3 (1)		7 (1)	3	5		2	13 (6)	13 (3)		1	1
6. R. Vincelot		6	5	3 (1)	15 (1)		2	4 (1)		5 (4)	2	1		4
18. C. Guy			2	6 (1)	11 (2)	8	5		2	2	1			
17. A. Gilliead				2	8		5		2	3				
30. M. Lund				4	2	4	3	2	2		3 (2)	6		2
9. C. Wyke				1	3	1	1	2	3	4		5		
14. S. McCartan				1	5	3 (1)	14	3	1	2 (1)	4	2		1
3. A. Chicksen														5
27. J. Gibson														2
28. C. Hawkes														1

PASSES RECEIVED BY THE PLAYER

PASSES MADE BY THE PLAYER

(*) HIGH PASSES

WALSALL: PASSES



	13. L. Roberts	24. K. Roberts	6. N. Devlin	23. J. Fitzwater	5. J. Guthrie	3. L. Leahy	7. A. Chambers	4. G. Dobson	11. K. Morris	10. E. Oztumer	20. A. Bakayoko	8. F. Cuvelier
13. L. Roberts	1								1 (1)		5 (5)	
24. K. Roberts		8 (2)	1					2		3 (1)	3 (2)	
6. N. Devlin	1	1	3 (1)				1	1		3 (1)	1	
23. J. Fitzwater		1		1				2 (1)	1		1 (1)	
5. J. Guthrie					2	2	1	3 (2)	2			
3. L. Leahy						1	3 (1)	2 (1)	2 (1)	4 (4)	2 (1)	
7. A. Chambers		1	1				1	1 (1)	4	3 (1)		
4. G. Dobson		3	1		1	5	1	4	3	2 (1)		
11. K. Morris		1				5		3	3 (1)			1
10. E. Oztumer		5			2	2	1	3	2	4		
20. A. Bakayoko			1			1			1	2		
8. F. Cuvelier						1						

PASSES RECEIVED BY THE PLAYER

PASSES MADE BY THE PLAYER

(*) HIGH PASSES

BRADFORD CITY: PLAYER EVENTS

		MINUTES PLAYED	GOALS / GOALS ON PENALTY	ASSISTS	TOUCHES	SHOTS / ON TARGET	FOULS COMM. / CONCEDED	YELLOW CARDS / RED CARDS	OFFSIDES	FREE K. SHOTS / ON TARGET	FREE K. CROSS / ACCURATE	CORNERS / ACCURATE	THROW INS / ACCURATE
1	C. Doyle	90	0/0	0	25	0/0	0/0	0/0	0	0/0	0/0	0/0	0/0
22	N. Knight-Percival	90	0/0	0	44	0/0	1/1	0/0	0	0/0	0/0	0/0	0/0
8	T. Dieng	90	0/0	0	57	1/0	2/1	1/0	0	0/0	0/0	0/0	0/0
15	S. Warnock	78	0/0	1	62	0/0	0/0	0/0	0	0/0	2/1	0/0	14/12
29	A. McMahon	90	0/0	0	72	1/0	0/1	0/0	0	0/0	0/0	2/1	22/22
6	R. Vincelot	90	0/0	0	62	0/0	1/1	0/0	0	0/0	0/0	0/0	0/0
18	C. Guy	67	0/0	0	42	2/0	0/0	1/0	0	0/0	0/0	0/0	0/0
17	A. Gilliead	55	0/0	0	20	0/0	1/1	0/0	0	0/0	0/0	0/0	0/0
30	M. Lund	90	1/0	0	40	3/1	0/0	0/0	0	0/0	0/0	0/0	2/2
9	C. Wyke	90	0/0	0	30	2/1	2/2	0/0	0	0/0	0/0	0/0	0/0
14	S. McCartan	90	0/0	0	52	2/1	0/1	0/0	0	0/0	0/0	0/0	0/0
3	A. Chicksen	12	0/0	0	9	0/0	0/0	0/0	0	0/0	0/0	0/0	7/7
27	J. Gibson	35	0/0	0	15	1/0	0/0	0/0	0	0/0	0/0	0/0	0/0
28	C. Hawkes	23	0/0	0	19	0/0	0/0	0/0	0	0/0	0/0	0/0	0/0

		DUELS / WON	GROUND CHALL. / WON	AIR CHALL. / WON	ATTACKING CHALL.	DEFENDING CHALL.	DRIBBLES	TACKLES	DEFENDING 1V1	RECOVERED IN OPP. HALF	LOSSES IN OPP. HALF
1	C. Doyle	1 / 1	0 / 0	1 / 1	0	0	0	0	0	0	0
22	N. Knight-Percival	21 / 9	14 / 4	7 / 5	3	8	1	0	2	1	0
8	T. Dieng	35 / 12	24 / 8	11 / 4	6	8	1	0	4	3	8
15	S. Warnock	16 / 4	14 / 4	2 / 0	2	6	0	3	3	2	2
29	A. McMahon	30 / 16	19 / 6	11 / 10	8	3	5	1	2	0	5
6	R. Vincelot	22 / 11	16 / 7	6 / 4	3	6	0	0	2	3	1
18	C. Guy	13 / 7	11 / 5	2 / 2	1	5	0	2	1	4	1
17	A. Gilliead	23 / 6	16 / 5	7 / 1	10	2	7	0	0	0	2
30	M. Lund	20 / 12	12 / 8	8 / 4	5	4	3	0	0	3	2
9	C. Wyke	58 / 25	29 / 7	29 / 18	16	1	3	0	0	1	6
14	S. McCartan	34 / 10	31 / 9	3 / 1	18	3	7	0	0	1	7
3	A. Chicksen	4 / 0	3 / 0	1 / 0	1	2	0	0	1	1	1
27	J. Gibson	18 / 9	18 / 9	0 / 0	16	0	11	0	0	0	2
28	C. Hawkes	5 / 2	3 / 1	2 / 1	0	0	0	1	0	0	1

		PASSES / ACCURATE	% ACCURATE	LONG PASSES / ACCURATE	THROUGH PASSES / ACCURATE	IN THE BOX / ACCURATE	CROSSES / ACCURATE	CROSS FROM BYLINE	CROSS HIGH	CROSS LOW	CROSS BLOCKED
1	C. Doyle	23 / 20	87	17 / 15	0 / 0	0 / 0	0 / 0	0	0	0	0
22	N. Knight-Percival	42 / 31	74	9 / 4	0 / 0	0 / 0	0 / 0	0	0	0	0
8	T. Dieng	45 / 37	83	2 / 0	0 / 0	0 / 0	1 / 1	1	0	1	0
15	S. Warnock	57 / 40	71	9 / 4	0 / 0	1 / 1	4 / 2	0	2	1	1
29	A. McMahon	68 / 50	74	18 / 11	0 / 0	2 / 1	12 / 4	3	7	3	2
6	R. Vincelot	57 / 47	83	11 / 8	1 / 0	0 / 0	0 / 0	0	0	0	0
18	C. Guy	40 / 39	98	3 / 3	0 / 0	0 / 0	0 / 0	0	0	0	0
17	A. Gilliead	19 / 17	90	0 / 0	0 / 0	0 / 0	0 / 0	0	0	0	0
30	M. Lund	36 / 29	81	3 / 2	0 / 0	0 / 0	3 / 1	0	1	0	2
9	C. Wyke	28 / 18	65	0 / 0	0 / 0	3 / 1	1 / 0	1	0	0	1
14	S. McCartan	49 / 38	78	3 / 2	1 / 1	1 / 1	1 / 0	0	0	1	0
3	A. Chicksen	7 / 6	86	0 / 0	0 / 0	0 / 0	0 / 0	0	0	0	0
27	J. Gibson	13 / 10	77	0 / 0	1 / 0	1 / 0	2 / 1	0	1	0	1
28	C. Hawkes	16 / 12	75	3 / 0	0 / 0	0 / 0	0 / 0	0	0	0	0

WALSALL: PLAYER EVENTS

		MINUTES PLAYED	GOALS / GOALS ON PENALTY	ASSISTS	TOUCHES	SHOTS / ON TARGET	FOULS COMM. / CONCEDED	YELLOW CARDS / RED CARDS	OFFSIDES	FREE K. SHOTS / ON TARGET	FREE K. CROSS / ACCURATE	CORNERS / ACCURATE	THROW INS / ACCURATE
13	L. Roberts	90	0/0	0	12	0/0	0/0	0/0	0	0/0	0/0	0/0	0/0
24	K. Roberts	90	0/0	0	49	0/0	1/0	0/0	0	0/0	0/0	0/0	14/10
6	N. Devlin	90	0/0	0	26	0/0	0/0	0/0	0	0/0	0/0	0/0	0/0
23	J. Fitzwater	90	0/0	0	20	0/0	0/0	0/0	0	0/0	0/0	0/0	0/0
5	J. Guthrie	90	0/0	0	27	0/0	2/0	0/0	0	0/0	0/0	0/0	0/0
3	L. Leahy	90	0/0	0	32	0/0	0/1	0/0	0	0/0	0/0	0/0	17/15
7	A. Chambers	90	0/0	0	22	0/0	1/1	0/0	0	0/0	0/0	0/0	0/0
4	G. Dobson	90	0/0	0	33	1/1	0/1	0/0	0	0/0	3/1	1/0	0/0
11	K. Morris	90	0/0	0	32	1/0	0/0	0/0	0	0/0	0/0	0/0	0/0
10	E. Oztumer	87	1/0	0	30	2/2	1/2	1/0	0	0/0	1/0	0/0	0/0
20	A. Bakayoko	90	0/0	0	18	0/0	3/2	0/0	0	0/0	0/0	0/0	0/0
8	F. Cuvelier	3	0/0	0	3	0/0	0/0	0/0	0	0/0	0/0	0/0	0/0

		DUELS / WON	GROUND CHALL. / WON	AIR CHALL. / WON	ATTACKING CHALL.	DEFENDING CHALL.	DRIBBLES	TACKLES	DEFENDING 1V1	RECOVERED IN OPP. HALF	LOSSES IN OPP. HALF
13	L. Roberts	1/1	0/0	1/1	0	0	0	0	0	0	0
24	K. Roberts	41/13	33/10	8/3	4	20	2	0	15	4	5
6	N. Devlin	17/6	8/3	9/3	3	4	3	0	3	3	6
23	J. Fitzwater	14/3	6/1	8/2	0	4	0	0	2	0	0
5	J. Guthrie	22/7	13/4	9/3	0	11	0	0	2	0	0
3	L. Leahy	20/7	13/2	7/5	2	7	0	1	3	0	5
7	A. Chambers	39/12	24/8	15/4	1	6	0	1	1	3	1
4	G. Dobson	28/11	23/9	5/2	7	10	2	1	5	6	3
11	K. Morris	31/12	23/9	8/3	8	7	2	0	3	1	3
10	E. Oztumer	18/6	17/6	1/0	9	2	2	0	0	5	3
20	A. Bakayoko	54/13	36/9	18/4	13	7	4	1	1	5	5
8	F. Cuvelier	3/0	3/0	0/0	1	1	0	0	0	0	0

		PASSES / ACCURATE	% ACCURATE	LONG PASSES / ACCURATE	THROUGH PASSES / ACCURATE	IN THE BOX / ACCURATE	CROSSES / ACCURATE	CROSS FROM BYLINE	CROSS HIGH	CROSS LOW	CROSS BLOCKED
13	L. Roberts	11/8	73	10/7	0/0	0/0	0/0	0	0	0	0
24	K. Roberts	37/18	49	14/6	1/0	1/0	1/0	1	1	0	0
6	N. Devlin	23/11	48	3/2	0/0	0/0	0/0	0	0	0	0
23	J. Fitzwater	18/6	34	10/2	0/0	0/0	0/0	0	0	0	0
5	J. Guthrie	18/11	62	6/2	0/0	0/0	0/0	0	0	0	0
3	L. Leahy	27/14	52	13/8	2/0	1/1	3/0	1	0	2	1
7	A. Chambers	18/12	67	6/2	0/0	0/0	0/0	0	0	0	0
4	G. Dobson	27/21	78	2/1	0/0	2/1	1/0	1	0	1	0
11	K. Morris	21/15	72	4/1	0/0	0/0	0/0	0	0	0	0
10	E. Oztumer	26/19	74	2/0	2/2	0/0	0/0	0	0	0	0
20	A. Bakayoko	16/6	38	1/0	0/0	1/0	0/0	0	0	0	0
8	F. Cuvelier	2/1	50	0/0	0/0	0/0	1/0	1	0	1	0

MATCH REPORT GUIDE

SECTION 1

AVERAGE POSITIONS

Players position is calculated on an average detected point which takes into consideration every kind of action, including those with no ball possession.

White-filled circles are substitutes indicators.

SECTION 2

GENERALS**Average position**

It shows the barycentre of the team, considering the average place of its actions.

CONSTRUCTION**Actions started by goalkeeper**

It considers all the actions started by the goalkeeper. It will be considered as a single one even if inside the same action he is involved more than once before the ball crosses the halfway line.

Long pass

Number of throws beyond the halfway line.

Low

Number of throws to a fellow teammate inside his half of the field.

Right

Number of actions crossing the halfway line in the right side.

Left

Number of actions crossing the halfway line in the left side.

Center

Number of actions crossing the halfway line in the central area.

Failed

Number of actions stopped before crossing the halfway line.

ATTACKING PLAY**Actions finalization**

It shows team offensive dangerousness and the way it is carried out.

Shot from outside of penalty area

Number of team shots from outside the penalty area.

Crosses

It shows how many finalizations are completed straight after a cross from the flanks.

Build-Up play

It shows how many finalizations are completed straight after a build-up play.

Long ball

It shows how many finalizations are completed straight after a long ball.

DEFENSIVE**Final Third Entries**

Number of times the opponent team plays the ball between the halfway line and the penalty area.

Fouls near the box

Number of fouls committed by the team nearby its penalty areas

SECTION 3

TERRITORIAL COVERAGE**Ball possession recovery**

It only takes into consideration the actual number of ball possession recoveries, even if temporary. Recoveries caused by opponents mistakes are not considered (i.e. ball kicked out of the pitch by the opponent).

SECTION 4

DUELS**Attacking duels**

Number of duels carried out when the team has ball possession.

Defensive duels

Number of duels carried out when the opponent team has ball possession.

SECTION 7

PASSES

Players position is calculated on an average detected point based on the position occupied, considering every kind of action, including those with no ball possession.

Lines connecting players show the number of passes. The thicker is the line, the higher is the number of passes between each other.